



SOURCE

—
A versatile classic fabric,
ideal for acoustic drapery
to reduce unwanted
reverberation + soften
sound within a space

INSTYLE

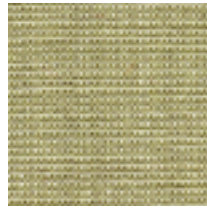
SOURCE



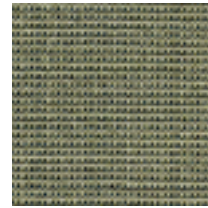
SOURCE Comfort



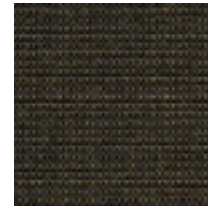
SOURCE Natural



SOURCE Air



SOURCE Pure



SOURCE Create



SOURCE Nourish



SOURCE Local



SOURCE Pride



SOURCE Truth



SOURCE Unit



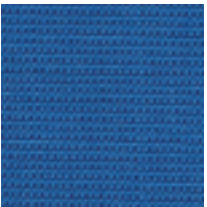
SOURCE Hidden



SOURCE Origin



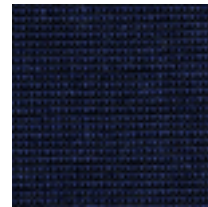
SOURCE Global



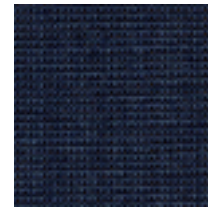
SOURCE Sanctuary



SOURCE Water



SOURCE Rain



SOURCE Well



SOURCE Details



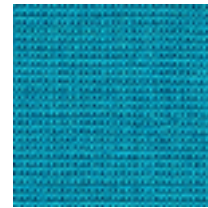
SOURCE Haven



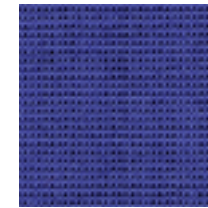
SOURCE Brilliance



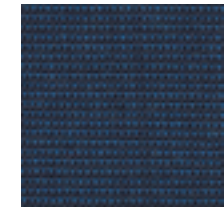
SOURCE Relaxation



SOURCE Wonder



SOURCE Strength



SOURCE Fulfilment



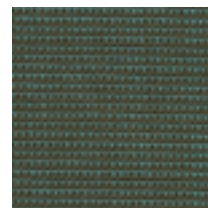
SOURCE Spring



SOURCE Erer



SOURCE Joy



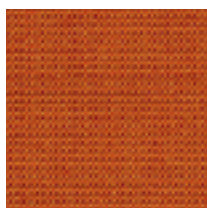
SOURCE Essence



SOURCE Knowledge



SOURCE Amusement



SOURCE Vitality



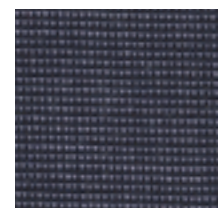
SOURCE Major



SOURCE Tomato

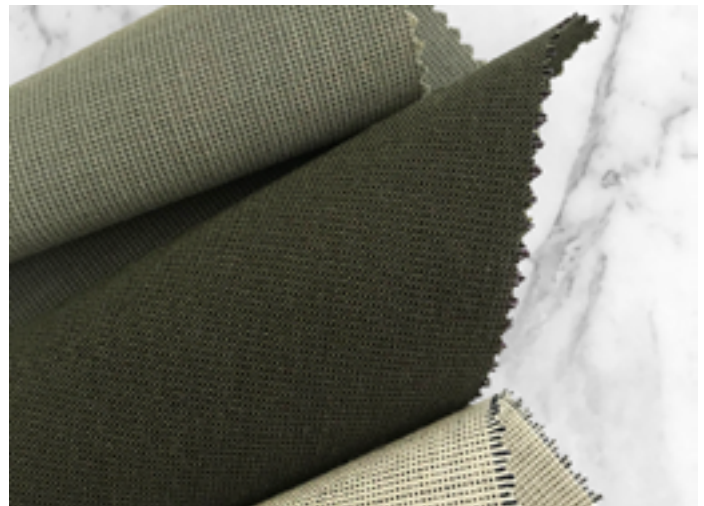


SOURCE Cee



SOURCE Beauty

Physical product may vary in colour from screen, please refer to physical sample
Please refer to website for current colour range



COMPOSITION	100% Australian worsted Eco wool
WIDTH / WEIGHT	188cm / 320gsm
PATTERN REPEAT	nil
ROLL SIZE	50m approx.
CARE CODE	Wool Curtain Care
CTA RATING	sf COMMERCIAL SCREEN FABRICS
SEAM SLIPPAGE AS2001.2.22	Warp 3.5mm Weft 5.7mm Note: All seams must be overlocked or secured to prevent the premature failure of the seam due to fraying
LIGHTFASTNESS	5
FIRE RATINGS AS/NZS 1530.3	Ignitability 10 Spread of Flame 0 Heat Evolved 0 Smoke Developed 4
AS/NZS 3837	BCA Group 1 Av. Specific Extinction Area 75.5m2/kg
ISO 5660.1	NZBC Group 1-S Av. Specific Extinction Area 89.6m2/kg
Additional Fire Tests	California 117E, ASTM E84
Important	Please check your project requirements as the BCA flammability requirements for curtaining vary from state to state

ACOUSTIC AS/ISO 354	NRC 0.55 Acoustic drapery reduces unwanted reverberation whilst softening sound
APPLICATION	Acoustic drapery*, upholstery seating, screens, wall panels
IMPORTANT	*Acoustic drapery must be lined if used on an external window If the back of the curtain is to be visible, we recommend lining or feature a double layer of fabric back to back
ORIGIN	Made in Australia
PLEASE NOTE	Results from performance tests are guidelines only



CERTIFICATIONS + STANDARDS

- Low VOC
- OEKO-TEX 100

ENERGY + EMISSIONS

- Weaving mill has energy-saving initiatives in place

WATER + CHEMICALS

- Australian Eco wool meets strict chemical minimisation criteria and does not contain any LBC Red List chemicals or Substances of Very High Concern (SVHCs)
- Wool absorbs indoor air contaminants, improving air quality
- Wool is inherently fire, stain + soil resistant, hence no finishing treatments are required
- Production facility uses a mix of recycled + fresh water sources, with at least 30% rain-fed

CIRCULARITY + LIFECYCLE

- Wool is a pure Biological Nutrient in the circular economy and is 100% biodegradable + rapidly renewable
- Source can be accepted for takeback as part of our REVIVE® Product Stewardship Scheme
- Waste reduction measures in place at weaving mill

LAND USE + BIODIVERSITY

- Australian Eco wool is sourced from non-mulesed sheep
- Impacts on land and biodiversity from weaving mill such as energy sources, emissions to air and wastewater are monitored and reported on, meeting or exceed regulatory standards

SOCIAL IMPACT

- Australian weaving mill meets all local labour law requirements, ensuring fair wages, safe working conditions, ethical treatment of employees + anti-discrimination
- Upstream suppliers are ISO 45001 certified, and have an Occupational Health and Safety Management System to enhance safety and reduce workplace risks

BUILDING RATING SYSTEMS

Source will contribute the following points for Green Star, LEED + WELL building standards:

Criteria	Green Star	LEED	WELL
Low VOC	✓	✓	✓
Bio-Based Materials	NA	✓	NA
Product Stewardship Program	✓	✓	NA
Toxic Material Reduction	NA	NA	✓

GREEN STAR

- Indoor Pollutants/Low VOC (12)
- Product Stewardship Program (21.1 E)
- Source can be used on white furniture certified to Ecospecifier, AFRDI, ECNZ and GECA
- The Green Star Rating Tool states “Where at least 90% of an item’s mass is certified to a GBCA recognised standard, the item can be entered as a certified product at Level A, B or C.” Therefore any textile can be used as textiles are almost always under 10% by weight of a furniture item.

LEED

- Low Emitting Materials / Low VOC (EQ credit)
- Extended Producer Responsibility (MR credit)
- Responsible Sourcing of Bio-Based Materials (MR credit)

WELL

- Air Quality/VOC Restrictions (A01 + X06)
- Materials Optimisation (X08)

