

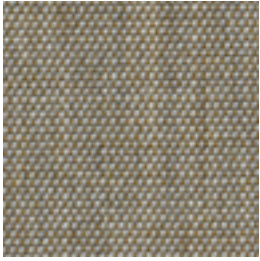


NATIVE

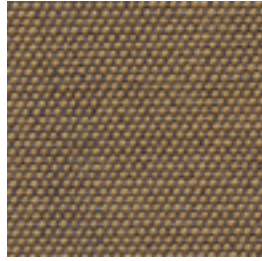
—
A classic sustainable fabric,
ideal for acoustic drapery
to reduce unwanted
reverberation + soften
sound within a space

INSTYLE

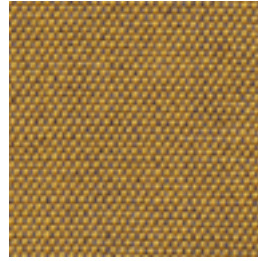
NATIVE



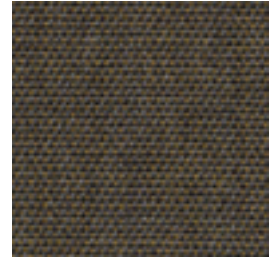
NATIVE Paperbark



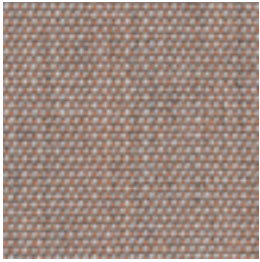
NATIVE Dialect



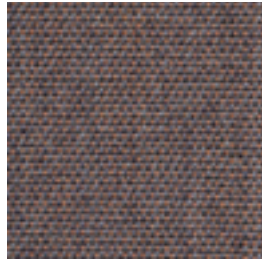
NATIVE Wattleseed



NATIVE Imagery



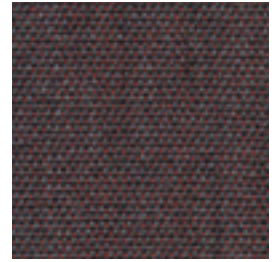
NATIVE Guide



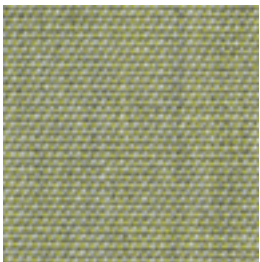
NATIVE Banksia



NATIVE Red Ochre



NATIVE Art



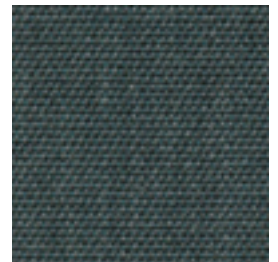
NATIVE Olivine



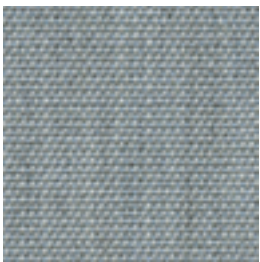
NATIVE Tea Tree



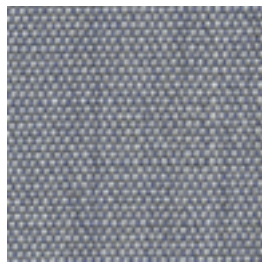
NATIVE Eucalypt



NATIVE Flora



NATIVE Blue Gum



NATIVE Habitat



NATIVE Coastline



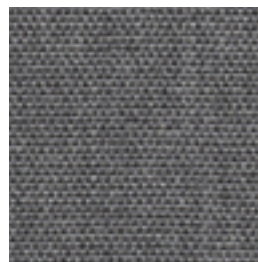
NATIVE Language



NATIVE Saltbush



NATIVE Silver Ash




NATIVE Ironbark



NATIVE Mallow

Physical product may vary in colour from screen, please refer to physical sample
Please refer to website for current colour range



COMPOSITION	>90% Australian eco wool, <10% nylon								
WIDTH / WEIGHT	137cm / 390gsm								
PATTERN REPEAT	Nil								
ROLL SIZE	50m approx.								
CARE CODE	Wool Curtain Care								
CTA RATING	 COMMERCIAL SCREEN FABRICS								
SEAM SLIPPAGE AS2001.2.22	Warp 7mm Weft 4mm Note: All seams must be overlocked or secured to prevent the premature failure of the seam due to fraying								
LIGHTFASTNESS	> 5								
FIRE RATINGS AS/NZS 1530.3	<table border="0"> <tr> <td>Ignitability</td> <td>0</td> </tr> <tr> <td>Spread of Flame</td> <td>0</td> </tr> <tr> <td>Heat Evolved</td> <td>0</td> </tr> <tr> <td>Smoke Developed</td> <td>3</td> </tr> </table>	Ignitability	0	Spread of Flame	0	Heat Evolved	0	Smoke Developed	3
Ignitability	0								
Spread of Flame	0								
Heat Evolved	0								
Smoke Developed	3								
AS/NZS 3837 (AS 5637.1)	BCA Group 2 Av. Specific Extinction Area 81.4m2/kg								
ISO 5660.1	NZBC Group 2s in accordance with C/VM2 Appendix A								
IMO 2010 FTP Part 8	Sections 4.2 + 4.3:Pass								
Important	Please check your project requirements as the BCA flammability requirements for curtaining vary from state to state								

ACOUSTIC AS/ISO 354	NRC 0.65 Acoustic drapery helps reduce unwanted reverberation whilst softening sound within a space
APPLICATION	Acoustic drapery*, upholstery seating, screens, wall panels
IMPORTANT	*Acoustic drapery must be lined if used on an external window If curtain back is visible, we recommend lining or feature a double layer of fabric back to back
ORIGIN	Made in Australia
PLEASE NOTE	Results from performance tests are guidelines only



CERTIFICATIONS + STANDARDS

- Low VOC
- OEKO-TEX 100

ENERGY + EMISSIONS

- Weaving mill has energy-saving initiatives in place

WATER + CHEMICALS

- Australian eco wool meets strict chemical minimisation criteria and does not contain any LBC Red List chemicals or Substances of Very High Concern (SVHC)
- Wool absorbs indoor air contaminants, improving air quality
- Wool is inherently fire, stain + soil resistant, hence no finishing treatments are required
- Production facility uses a mix of recycled + fresh water sources, with at least 30% rain-fed

CIRCULARITY + LIFECYCLE

- Wool content (>90%) is a Biological Nutrient in the circular economy and is 100% biodegradable + rapidly renewable
- Native can be accepted for takeback as part of our REVIVE® Product Stewardship Scheme
- Waste reduction measures in place at weaving mill

LAND USE + BIODIVERSITY

- Impacts on land + biodiversity from weaving mill such as energy sources, emissions to air + wastewater are monitored + reported on, met or exceeded regulatory standards

SOCIAL IMPACT

- \$1/m sold is donated to The Nature Conservancy
- Australian weaving mill meets all local labour law requirements, ensuring fair wages, safe working conditions, ethical treatment of employees + anti-discrimination
- Upstream suppliers are ISO 45001 certified, and have an Occupational Health and Safety Management System to enhance safety and reduce workplace risks

BUILDING RATING SYSTEMS

Native will contribute the following points for Green Star, LEED + WELL building standards:

Criteria	Green Star	LEED	WELL
Low VOC	✓	✓	✓
Bio-Based Materials	NA	✓	NA
Product Stewardship Program	✓	✓	NA
Toxic Material Reduction	NA	NA	✓

GREEN STAR

- Indoor Pollutants/Low VOC (12)
- Product Stewardship Program (21.1 E)
- Native can be used on white furniture certified to Ecospecifier, AFRDI, ECNZ and GECA
- The Green Star Rating Tool states “Where at least 90% of an item’s mass is certified to a GBCA recognised standard, the item can be entered as a certified product at Level A, B or C.” Therefore any textile can be used as textiles are almost always under 10% by weight of a furniture item.

LEED

- Low Emitting Materials / Low VOC (EQ credit)
- Extended Producer Responsibility (MR credit)
- Responsible Sourcing of Bio-Based Materials (>90% MR credit)

WELL

- Air Quality/VOC Restrictions (A01 + X06)
- Materials Optimisation (X08)

