



# ATLAS

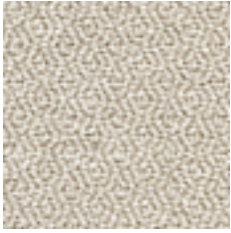
---

A timeless crepe fabric,  
ideal for acoustic drapery  
to reduce unwanted  
reverberation + soften  
sound within a space

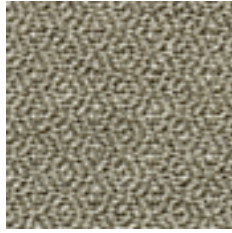
INSTYLE



# ATLAS



ATLAS Summit



ATLAS Husk



ATLAS Endeavour



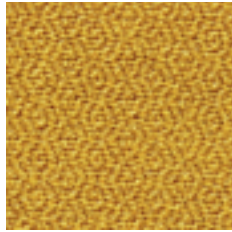
ATLAS Nougat



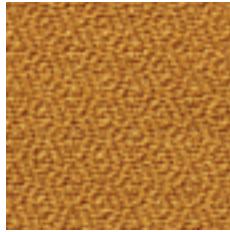
ATLAS Hound



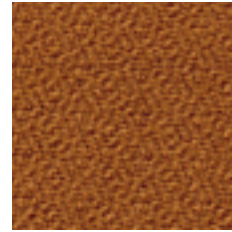
ATLAS Dune



ATLAS Nashi



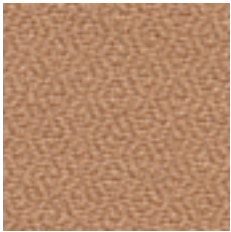
ATLAS Medal



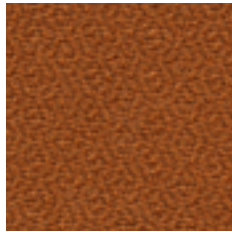
ATLAS Mustard



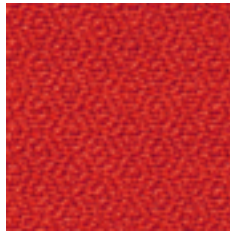
ATLAS Truffle



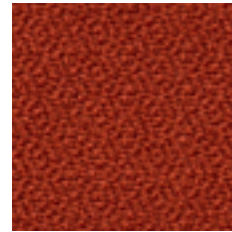
ATLAS Drifter



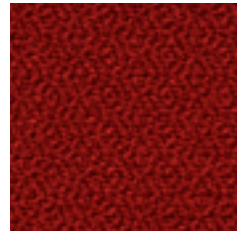
ATLAS Frontier



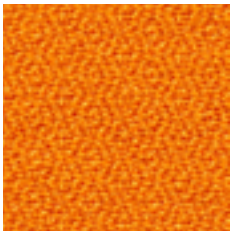
ATLAS Marmalade



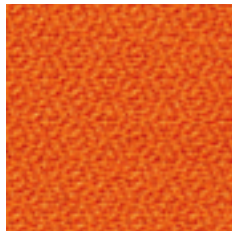
ATLAS Paprika



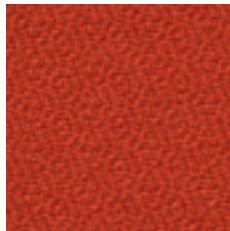
ATLAS Oxide



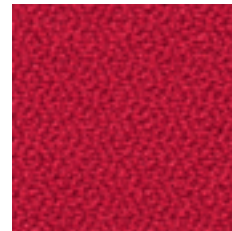
ATLAS Amber



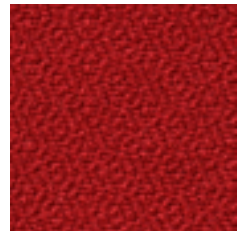
ATLAS Allure



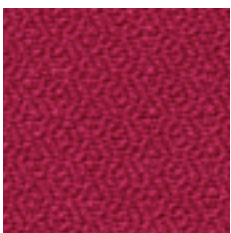
ATLAS Trailblazer



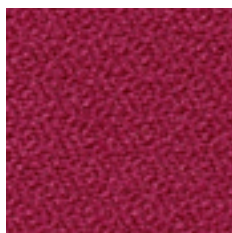
ATLAS Siren



ATLAS Lantern



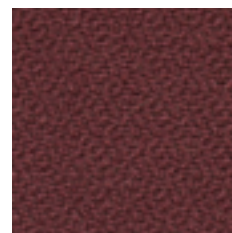
ATLAS Pucker



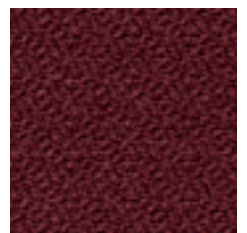
ATLAS Raspberry



ATLAS Fez



ATLAS Globe

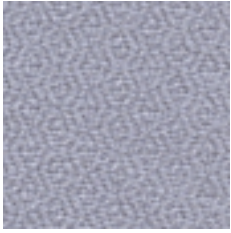


ATLAS Beetroot

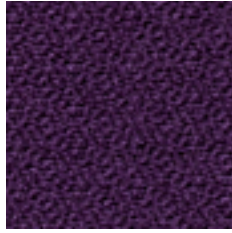
Patterns shown are not to scale  
Physical product may vary in colour from screen, please refer to physical sample  
Please refer to website for current colour range



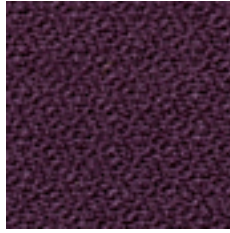
# ATLAS



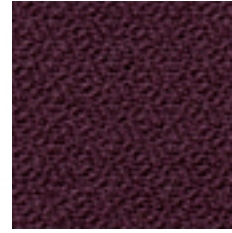
ATLAS Ash



ATLAS Heather



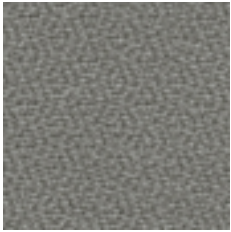
ATLAS Tapenade



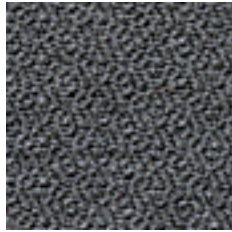
ATLAS Velvet



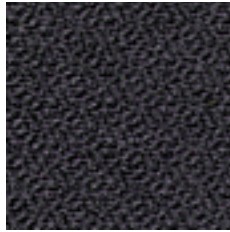
ATLAS Regent



ATLAS Chart



ATLAS Fossil



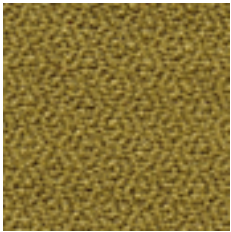
ATLAS Slate



ATLAS Elk



ATLAS Grizzly



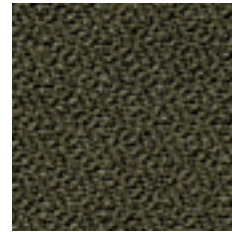
ATLAS Aloe



ATLAS Wren



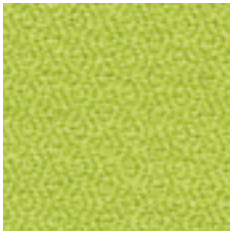
ATLAS Hessian



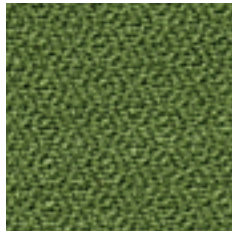
ATLAS Turf



ATLAS Highland



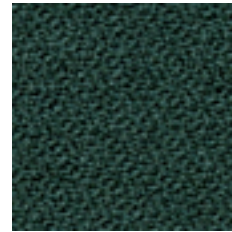
ATLAS Citrus



ATLAS Parrot



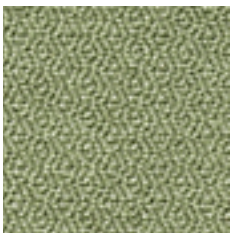
ATLAS Explorer



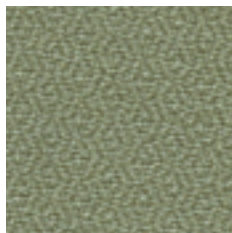
ATLAS Drake



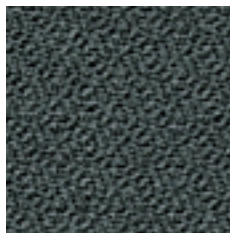
ATLAS Laurel



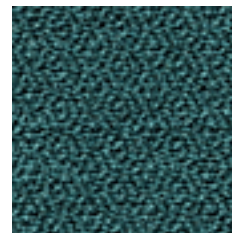
ATLAS Bud



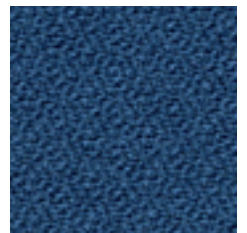
ATLAS Settler



ATLAS Juniper



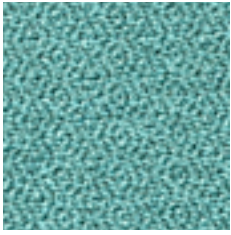
ATLAS Ship



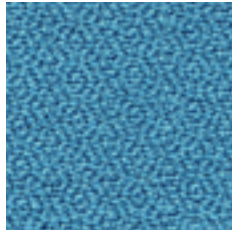
ATLAS Topaz

Patterns shown are not to scale  
Physical product may vary in colour from screen, please refer to physical sample  
Please refer to website for current colour range

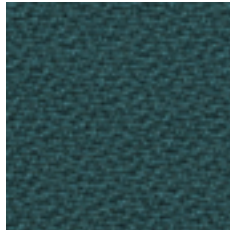
# ATLAS



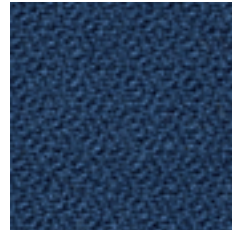
ATLAS Sound



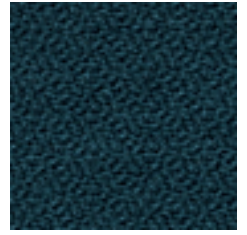
ATLAS Bounty



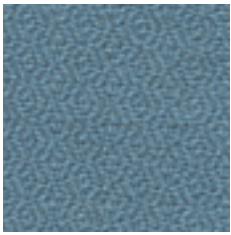
ATLAS Rockpool



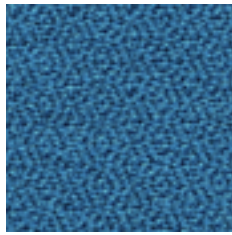
ATLAS Cadet



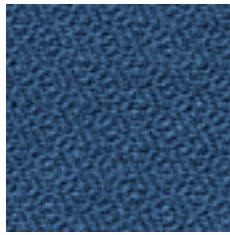
ATLAS Cove



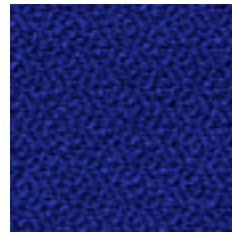
ATLAS Glacier



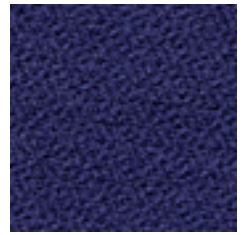
ATLAS Spinnaker



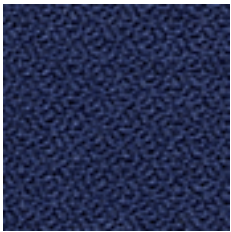
ATLAS Sapphire



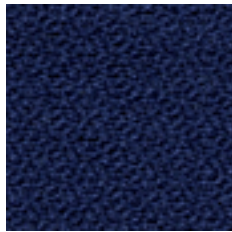
ATLAS Deep



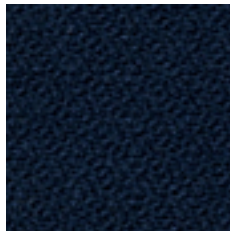
ATLAS Emperor



ATLAS Lido



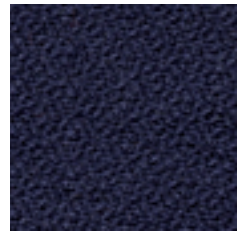
ATLAS Admiral



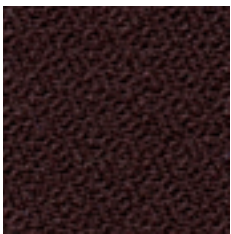
ATLAS Thunder



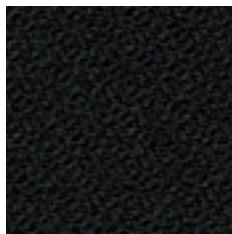
ATLAS Sketch



ATLAS Squid



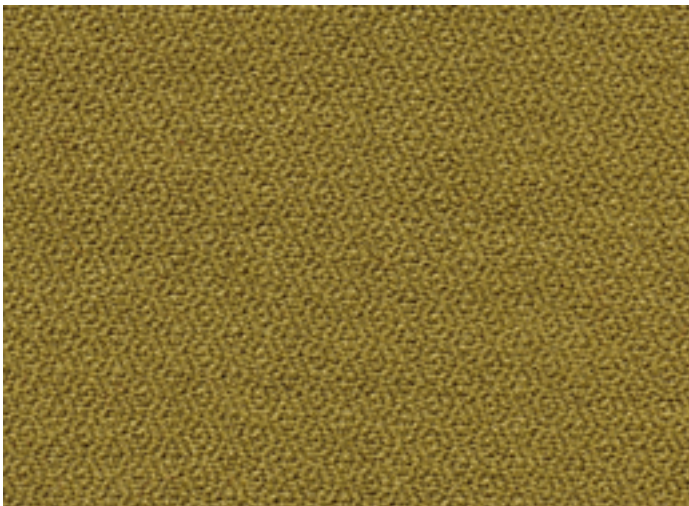
ATLAS Fig



ATLAS Pirate

Patterns shown are not to scale  
Physical product may vary in colour from screen, please refer to physical sample  
Please refer to website for current colour range





COMPOSITION	100% Australian worsted eco wool
WIDTH / WEIGHT	137cm / 402gsm
PATTERN REPEAT	Nil
ROLL SIZE	55m approx.
CARE CODE	Wool Curtain Care
CTA RATING	 SOFT FURNISHING COMMERCIAL USE
SEAM SLIPPAGE AS2001.2.22	Warp 5.3mm Weft 6.5mm Note: All seams must be overlocked or secured to prevent the premature failure of the seam due to fraying
LIGHTFASTNESS	>5
FIRE RATINGS AS/NZS 1530.3	Ignitability 15 Spread of Flame 0 Heat Evolved 0 Smoke Developed 3
AS/NZS 3837	BCA Group 1 Av. Specific Extinction Area 85.1m2/kg
IMO Resolution A.652(16)	Sections 8.2 + 8.3 Pass
Additional Fire Tests	California 117E, ASTM E84
Important	Please check your project requirements as the BCA flammability requirements for curtaining vary from state to state

ACOUSTIC AS/ISO 354	NRC 0.55 Acoustic drapery helps reduce unwanted reverberation whilst softening sound within a space
APPLICATION	Acoustic drapery*, upholstery seating, screens, wall panels
IMPORTANT	*Acoustic drapery must be lined if used on an external window If curtain back is visible, we recommend lining or feature a double layer of fabric back to back
ORIGIN	Made in Australia
PLEASE NOTE	Results from performance tests are guidelines only



**CERTIFICATIONS + STANDARDS**

- Low VOC
- OEKO-TEX 100

**ENERGY + EMISSIONS**

- Weaving mill has energy-saving initiatives in place

**WATER + CHEMICALS**

- Australian eco wool meets strict chemical minimisation criteria and does not contain any LBC Red List chemicals or Substances of Very High Concern (SVHC)
- Wool absorbs indoor air contaminants, improving air quality
- Wool is inherently fire, stain + soil resistant, hence no finishing treatments are required
- Production facility uses a mix of recycled + fresh water sources, with at least 30% rain-fed

**CIRCULARITY + LIFECYCLE**

- Wool is a pure Biological Nutrient in the circular economy, 100% biodegradable + rapidly renewable
- Atlas can be accepted for takeback as part of our REVIVE® Product Stewardship Scheme
- Waste reduction measures in place at weaving mill

**LAND USE + BIODIVERSITY**

- Impacts on land + biodiversity from weaving mill such as energy sources, emissions to air + wastewater are monitored + reported on, met or exceeded regulatory standards

**SOCIAL IMPACT**

- Australian weaving mill meets all local labour law requirements, ensuring fair wages, safe working conditions, ethical treatment of employees + anti-discrimination
- Upstream suppliers are ISO 45001 certified, with an Occupational Health and Safety Management System to enhance safety + reduce workplace risks

**BUILDING RATING SYSTEMS**

Atlas will contribute the following points for Green Star, LEED + WELL building standards:

Criteria	Green Star	LEED	WELL
Low VOC	√	√	√
Bio-Based Materials	NA	√	NA
Product Stewardship Program	√	√	NA
Toxic Material Reduction	NA	NA	√

**GREEN STAR**

- Indoor Pollutants/Low VOC (12)
- Product Stewardship Program (21.1 E)
- Atlas can be used on white furniture certified to Ecospecifier, AFRDI, ECNZ and GECA
- The Green Star Rating Tool states “Where at least 90% of an item’s mass is certified to a GBCA recognised standard, the item can be entered as a certified product at Level A, B or C”, therefore any textile can be used as textiles are almost always under 10% by weight of a furniture item

**LEED**

- Low Emitting Materials / Low VOC (EQ credit)
- Extended Producer Responsibility (MR credit)
- Responsible Sourcing of Bio-Based Materials (MR credit)

**WELL**

- Air Quality/VOC Restrictions (A01 + X06)
- Materials Optimisation (X08)

