

# ATELIER

—  
A beautiful luxurious velvet, ideal for acoustic drapery to reduce unwanted reverberation + soften sound within a space

INSTYLE

# ATELIER



ATELIER Admire



ATELIER Glow



ATELIER Decadent



ATELIER Genie



ATELIER Mango



ATELIER Lava



ATELIER Exotic



ATELIER Venetian



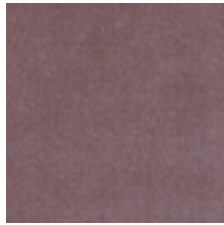
ATELIER Luxury



ATELIER Vintage



ATELIER Himalayan



ATELIER Ballet



ATELIER Nostalgia



ATELIER Mystic



ATELIER Indulgent



ATELIER Opulent



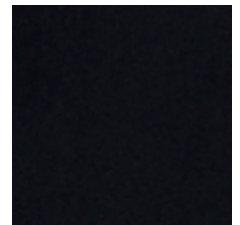
ATELIER Bloom



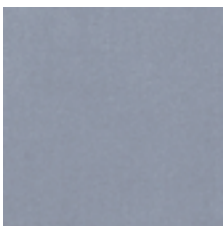
ATELIER Yale



ATELIER Oxford



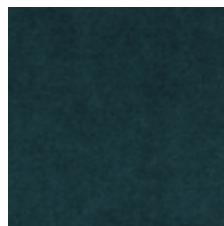
ATELIER Alibi



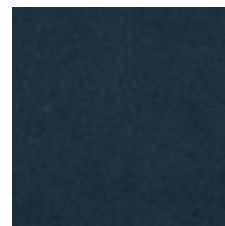
ATELIER Powder



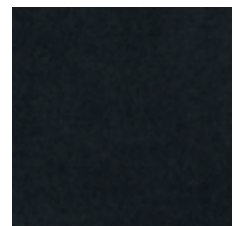
ATELIER Ocean



ATELIER Impress



ATELIER Capri



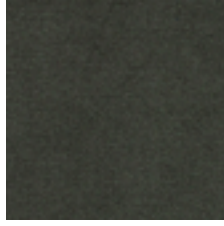
ATELIER Jungle

Product may vary in colour due to the nature of the media  
Please refer to website for current colour range

# ATELIER



ATELIER Palm



ATELIER Hunter



ATELIER Limelight



ATELIER Envy



ATELIER Antique



ATELIER Breeze



ATELIER Raw



ATELIER Minx



ATELIER Whimsy



ATELIER Tawny



ATELIER Salt Lake



ATELIER Quartz



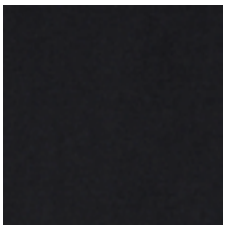
ATELIER Dreamy



ATELIER Runway




ATELIER Atelier



ATELIER Ultra

Product may vary in colour due to the nature of the media  
Please refer to website for current colour range



COMPOSITION	92% polyester, 5% cotton, 3% latex	
WIDTH / WEIGHT	140cm / 500gsm	
PATTERN REPEAT	nil	
ROLL SIZE	40m approx.	
CARE CODE	Acoustic Drapery: Dryclean Only	
CTA RATING	 COMMERCIAL SCREEN FABRICS	
SEAM SLIPPAGE AS2001.2.22		Warp 2mm Weft 1mm Note: All seams must be overlocked or secured to prevent the premature failure of the seam due to fraying
LIGHTFASTNESS ISO 105-B02	>5	
FIRE RATINGS AS/NZS 1530.3	Ignitability	11
	Spread of Flame	8
	Heat Evolved	4
	Smoke Developed	5
AS/NZS 3837	BCA Group 1 Av. Specific Extinction Area 50.7m <sup>2</sup> /kg	
ISO 5660.1	NZBC Group 1-S Av. Specific Extinction Area 9.6m <sup>2</sup> /kg	
Important	Please check your project requirements as the BCA flammability requirements for curtaining vary from state to state	
ACOUSTIC AS/ISO 354	NRC 0.4 Acoustic drapery helps reduce unwanted reverberation whilst softening sound within a space	
APPLICATION	Acoustic drapery, upholstery, screen, wall panel	
IMPORTANT	Acoustic drapery must be lined if used on an external window If the back of the curtain is to be visible, we recommend lining or feature a double layer of fabric back to back	
PLEASE NOTE	Results from performance tests are guidelines only	

**SHADING / NAP**

- The pile on velvet may flatten during upholstery or use. This is a normal characteristic of velvet and is not a fabric fault.
- A shading appearance during use should be expected, especially in areas of high use such as arms, seat fronts and back cushions.
- When upholstering it is important to pay attention to the nap direction. Velvet must be upholstered or sewn with the nap running in the same direction on panels / furniture.
- Failure to do this will result in adjoining panels / furniture showing a contrasting light and dark shading effect.



**CERTIFICATIONS + STANDARDS**

- Low VOC
- STeP by OEKO-TEX

**ENERGY + EMISSIONS**

- Manufacturing facility measures and reports carbon emissions and has set reduction targets
- Machine heat is recirculated to heat the manufacturing facility

**WATER + CHEMICALS**

- Manufacturing facility uses recycled water and harvested rainwater
- Atelier does not pose any exposure risks associated with the chemicals in California Prop 65
- Atelier has no added fire retardant, antibacterial or antimicrobial chemicals and is free of PFAs, PFCs, phthalates, lead, heavy metals, BPA, TRIS, formaldehyde and conflict minerals
- Manufacturing facility is REACH + ZDHC compliant

**CIRCULARITY + LIFECYCLE**

- Supplier has waste reduction measures in place
- Yarn waste is upcycled into raw materials for the automotive and carpet industries

**SOCIAL IMPACT**

- STeP by OEKO-TEX compliance ensures manufacturing facilities are assessed for worker OHS, safe handling of chemicals, corporate social responsibility, legal + regulatory compliance

**BUILDING RATING SYSTEMS**

Atelier will contribute the following points for Green Star, LEED + WELL building standards:

Criteria	Green Star	LEED	WELL
Low VOC	√	√	√
Material Transparency	NA	√	√

**GREEN STAR**

- Indoor Pollutants/Low VOC (12)
- Atelier can be used on white furniture certified to Ecospecifier, AFRDI, ECNZ and GECA
- The Green Star Rating Tool states “Where at least 90% of an item’s mass is certified to a GBCA recognised standard, the item can be entered as a certified product at Level A, B or C.”, therefore any leather can be used as leathers are almost always under 10% by weight of a furniture item

**LEED**

- Low Emitting Materials / Low VOC (EQ credit)
- Material Ingredient Optimisation / STeP by OEKO-TEX (MR credit)

**WELL**

- Air Quality/VOC Restrictions (A01 + X06)
- Materials Transparency / STeP by OEKO-TEX (X07)

