



ELMOSOFT

A chrome-free European leather with a beautiful soft handle and appearance

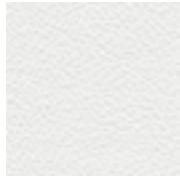
INSTYLE

ELMOSOFT X

CONTEMPORARY LEATHERS



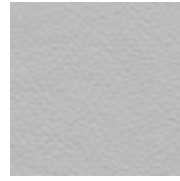
00118



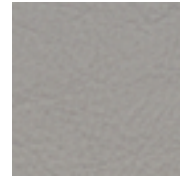
00109



01085



01037



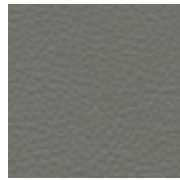
11033



01043



11073



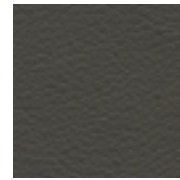
11049



11062



91118



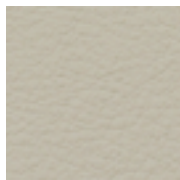
98087



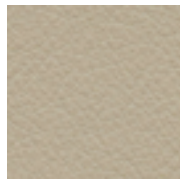
93121



00100



01021



01061



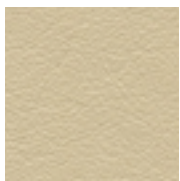
13072



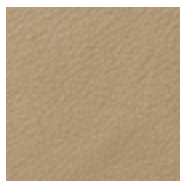
01003



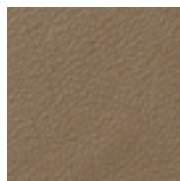
13070



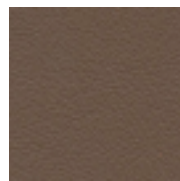
02122



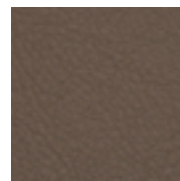
22034



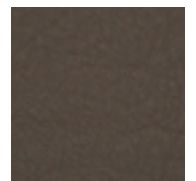
13075



93109



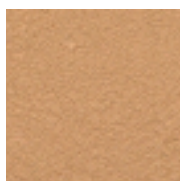
13087



13048



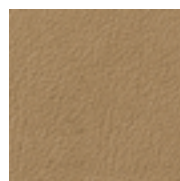
02092



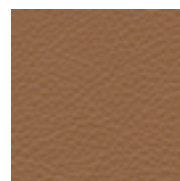
22024



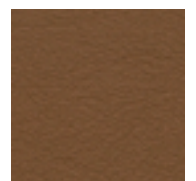
22030



03009



33077



43054



44023



54033



44012



54035



54021



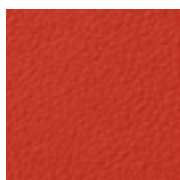
33004

ELMOSOFT X

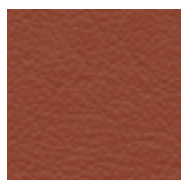
CONTEMPORARY LEATHERS



45065



45043



45035



55002



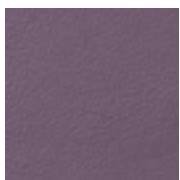
35126



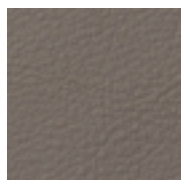
33001



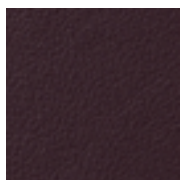
16007



76003



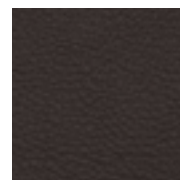
16018



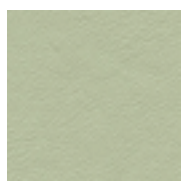
75013



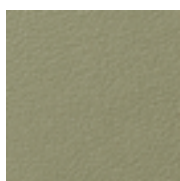
93129



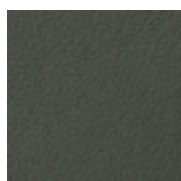
93099



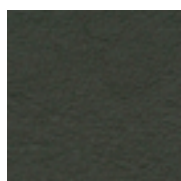
08055



18020



11060



98047



98015



93068



08039



88058



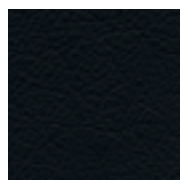
88059



78038



71017



97038



07070



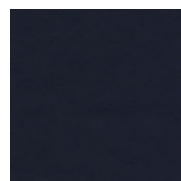
77078



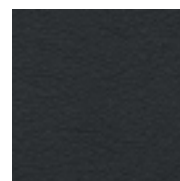
77158



07071



77127



91102



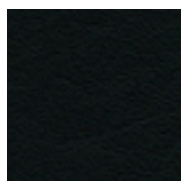
87033



87025

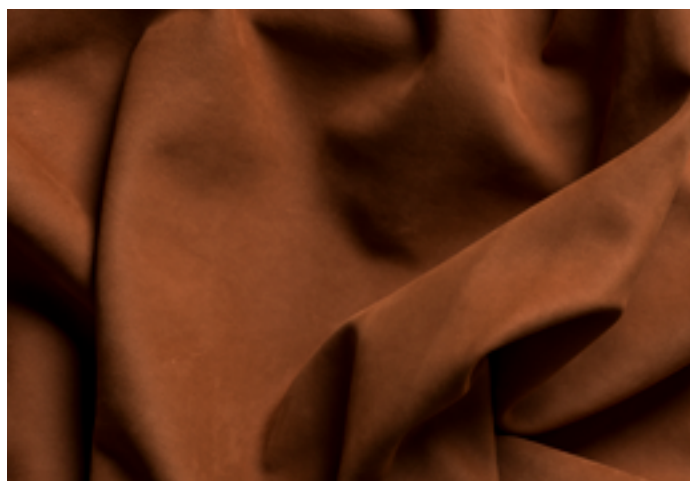
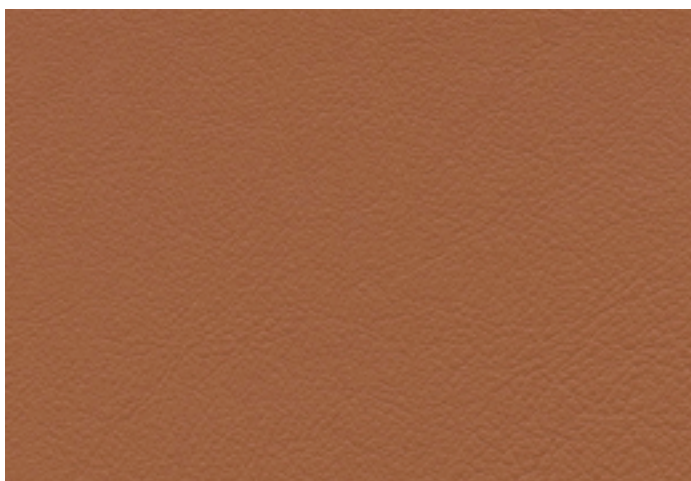



17027



99999

Please refer to physical sample as colour may vary from screen



AVERAGE HIDE SIZE	5 sqm
THICKNESS / WEIGHT	1.1 - 1.3mm / 980gsm
LEATHER TYPE	Semi-Aniline 
COLOURFASTNESS TO-AND-FRO RUBBING ENISO 11640 + 11641	Dry 4 Wet 4 Perspiration 4
LIGHTFASTNESS EN ISO 105-B02	6 Interior products must be protected from direct heat + sunlight
FINISH ADHESION EN ISO 11644	>2N / 10mm
pH AND ΔpH EN ISO 4045	pH >3.2 ΔpH ≤ 0.7
TEAR STRENGTH EN ISO 3377-1	20 N
FIRE RATINGS AS/NZS 1530.3	Ignitability 16 Spread of Flame 0 Heat Evolved 2 Smoke Developed 4
AS/NZS 3837	BCA Group 2 Av. Specific Extinction Area 146m2/kg
Available on request	BS 5852 Crib 5, IMO A.652(16), EN1021:1+2, ENISO1716, ISO3795, California 117, ISO 8191:1+2, DIN53438
EMBOSSED ELMODESIGN	Available in Pique, Herringbone, Wicker Weave, Basket Weave, Small Basket Weave, Ferrari and Lamborghini. Refer to Embossed Elmodesign brochure

PLEASE NOTE

- Sourced from high quality raw hides, Semi-Aniline leathers have a natural grain and invisible water-based protective coating to ensure the leather is suitable for demanding situations while maintaining a soft handle
- A very fine surface pigment increases the leather's resistance to colour change caused by sunlight exposure
- Results from performance tests are guidelines only

CARE

- Leather Care for Finished Leathers is available from our website

SEATING COMFORT RATING



A rating to determine a leather's seating comfort based upon the leather's ability to breathe and absorb moisture
 Tested to ASTM E 96 M-05
 Elmosoft achieves a Good Seating Comfort rating



CERTIFICATIONS + STANDARDS

- Leather Working Group Gold Ecolabel
- Low VOC
- Blue Angel Ecolabel
- Environmental Management System ISO 14001:2015 certified
- Compliant with European IPPC BAT for Tanning of Hides + Skins

ENERGY + EMISSIONS

- Net zero carbon footprint for leather processing
- Production facility uses 100% renewable electricity
- Scope 1 + 2 emissions quantified
- Tannery has set net zero target for product by 2040

WATER + CHEMICALS

- Chrome-free leather
- Water usage: 16.5m3 of recycled water per tonne rawhide
- No Substances of Very High Concern (SVHC) are used; Elmosoft is free of PFCs, flame retardants, phthalates + urea formaldehyde
- Tannery aligns with ZDHC + AFIRM Group chemical management objectives
- Tannery uses a biological Water Treatment Plant, utilising 100% non-potable river water in a closed-loop process that purifies the water before returning it to the source.

CIRCULARITY + LIFECYCLE

- Leather is a by-product of the food industry
- Leather is naturally durable, longlasting + reusable
- Tannery is 'Zero Waste' and creates no process waste or landfill
- All Contemporary Leathers can be accepted for takeback as part of our REVIVE® Product Stewardship Scheme

TRACEABILITY

- 100% of materials are traceable through chain of custody or physical marking
- Traceability Management System certified to ICEC TS PC 412

LAND USE + BIODIVERSITY

- All Contemporary Leathers are sourced from European locations which are free from deforestation risk
- European Union animal welfare law adheres to the requirements of the 'Five Freedoms'
- Processing by-products are used as fertilisers for local farms

SOCIAL IMPACT

- Leather Working Group conducts social audits and assesses health, safety + emergency preparedness
- Tannery certified in 'ICEC Social Responsibility' ensures social accountability and workers' rights internally + in upstream supply chain

BUILDING RATING SYSTEMS

Elmosoft will contribute the following points for Green Star, LEED + WELL building standards:

Criteria	Green Star	LEED	WELL
Low VOC	✓	✓	✓
Product Stewardship Program	✓	✓	NA
Manufacturer EMS	✓	NA	NA
Toxic Material Reduction	NA	NA	✓

GREEN STAR

- Environmental Management System (6.1)
- Indoor Pollutants/Low VOC (12)
- Product Stewardship Program (21.1 E)
- Elmosoft can be used on white furniture certified to Ecospecifier, AFRDI, ECNZ and GECA
- The Green Star Rating Tool states "Where at least 90% of an item's mass is certified to a GBCA recognised standard, the item can be entered as a certified product at Level A, B or C", therefore any leather can be used as leathers are almost always under 10% by weight of a furniture item

LEED

- Low Emitting Materials / Low VOC (EQ credit)
- Extended Producer Responsibility (MR credit)

WELL

- Air Quality/VOC Restrictions (A01 + X06)
- Materials Optimisation (X08)

