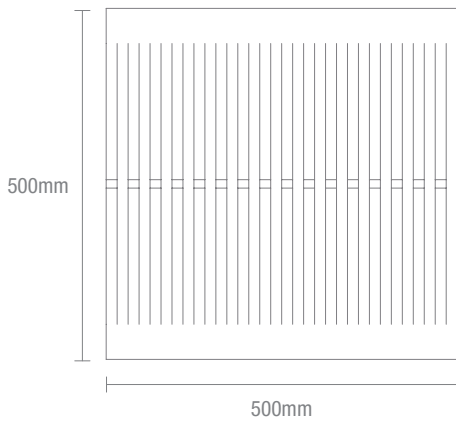


Ecooustic® Weave Tile

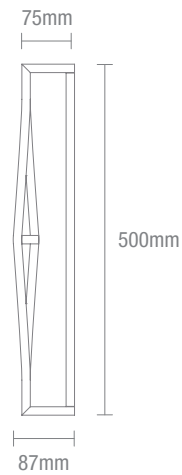
—
A unique three-dimensional acoustic tile
inspired by the fluidity of sound waves



Front View



Side View



PRODUCT	Ecoustic® Weave Tile
COMPOSITION	100% PET (60% recycled PET)
THICKNESS	75-87mm approx.
WEIGHT	Each tile weighs 1.4 kgs approx.
DIMENSIONS	500mm (w) x 500mm (l) x 87mm (d)
LIGHTFASTNESS ISO 105-B02	>7 Interior products must be protected from direct heat + sunlight
FIRE RATINGS AS/NZS 1530.3	Ignitability 8 Spread of Flame 0 Heat Evolved 1 Smoke Developed 5
AS/ISO 9705	BCA Group 1, SMOGRA <100 NZBC Group 1-S
ASTM E84	12mm: Class A
ACOUSTIC	NRC 0.9 Refer to acoustic graph on page 4
APPLICATION	Wall Tile - Directly fixed

Please Note

Variation in thickness, fibre mix, colour as well as flecks + surface blemishes are an inherent + unavoidable feature. Variations from panel to panel can occur, panel joints may be obvious upon installation creating a panelling effect. Installation may require onsite adjustment by the contractor to achieve a professional finish + minimal variation. Results from performance tests are guidelines only.

Moisture Absorption

Exposure to an atmosphere of 50% and 95% RH for four days provides moisture absorption of less than 0.2% per volume. As Ecoustic Weave is 100% polyester, it will not degrade over time due to moisture, mildew or rot in office environments.

Toxicity

Polyester is non-toxic and is classed the same as wood under the State of New York Article 15 Part 1120. Ecoustic Weave does not contain any Red List Chemicals (USA EPA).

Warranty

12 month conditional warranty against manufacturing defects. This applies to internal installation only, outdoor use will void any warranty.

HOW TO SPECIFY	
PRODUCT	Ecoustic® Weave Tile
TILE SIZE	500 x 500mm Tile
COLOUR	Select from SC 12mm colours

Solid Colour 12mm



Snowdrop



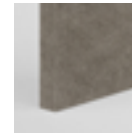
Ecru



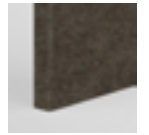
Almond



Horizon



Fawn



Truffle



Sand



Buff



Dusk



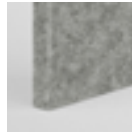
Kiln



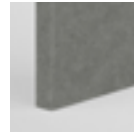
Oxide



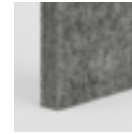
Cool



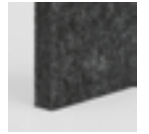
Atom



Cirrus



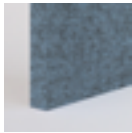
Tungsten



Galaxy



Denim



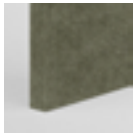
Jay



Night



Cave



Olive



Isle



Azure



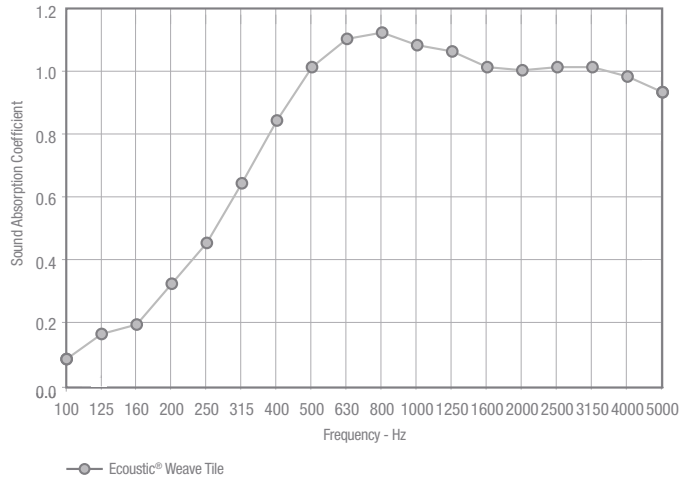
Wild

Please refer to physical sample finish as colour may vary from screen

The sound absorption has been tested in accordance with AS/ISO 354

NRC 0.9

For complete test reports please contact your local distributor



Frequency	α_S Ecoustic Weave Tile
100	0.09
125	0.17
160	0.20
200	0.33
250	0.46
315	0.65
400	0.85
500	1.02
630	1.11
800	1.13
1000	1.09
1250	1.07
1600	1.02
2000	1.01
2500	1.02
3150	1.02
4000	0.99
5000	0.94
NRC	0.9



CERTIFICATIONS + STANDARDS

- Environmental Product Declaration (EPD)
- Declare Red List Free
- Cradle to Cradle Bronze
- Environmental Management System ISO 14001:2015
- Low VOC

ENERGY + EMISSIONS

- Embodied carbon: 6.5kg CO2eq per kg
- Production facility uses 30% renewable energy

WATER + CHEMICALS

- No water is used in production of Ecoustic® Weave Tiles
- Ecoustic® Weave Tiles do not contain any Banned List chemicals
- Third-party certifications assess chemical safety to 99% of material weight

CIRCULARITY + LIFECYCLE

- Ecoustic® Weave Tiles are a pure Technical Nutrient in the circular economy
- Ecoustic® Weave Tiles contain 60% post-consumer recycled PET
- Ecoustic® Weave Tiles are designed for disassembly + reuse, Instyle's adhesive-free mounting system allows for easy installation + material separation at end of product lifecycle
- Ecoustic® Weave Tiles can be accepted for takeback as part of our REVIVE® Product Stewardship Scheme

LAND USE + BIODIVERSITY

- Impacts on land and biodiversity such as resource use, output flows + waste, acidification + eutrophication are quantified in the product's Lifecycle Assessment (LCA) available in the EPD

SOCIAL IMPACT

- OHS Management System ISO 45001
- Supplier has an established human rights policy + audit management process
- Supply chain Code of Conduct in place
- Cradle-to-Cradle certification requires a risk assessment be completed to address potential health, safety + human rights risks

BUILDING RATING SYSTEMS

Ecoustic® Weave Tiles will contribute the following points for Green Star, LEED + WELL building standards:

Criteria	Green Star	LEED	WELL
Recycled Content	√	√	NA
Low VOC	√	√	√
Stewardship Program	√	√	NA
EPD	√	√	NA
Cradle to Cradle Bronze Certification	√	√	√
Declare Label	√	√	√
Manufacturer EMS	√	NA	NA
Toxic Material Reduction	NA	NA	√

GREEN STAR

- Indoor Pollutants/Low VOC (12)
- Recycled Content Product (21.1 B)
- Environmental Product Declarations (21.1 C)
- Third Party Certification (21.1 D)
- Product Stewardship Program (21.1 E)

LEED

- Low Emitting Materials / Low VOC (EQ credit)
- Recycled Content (MR credit)
- Environmental Product Declarations (MR credit)
- Material Ingredient Reporting (MR credit)
- Extended Producer Responsibility (MR credit)

WELL

- Enhanced Material Restrictions (X05)
- Air Quality/VOC Restrictions (A01 + X06)
- Materials Transparency (X07)
- Materials Optimisation (X08)
- Sound Reducing Surfaces (S05)

