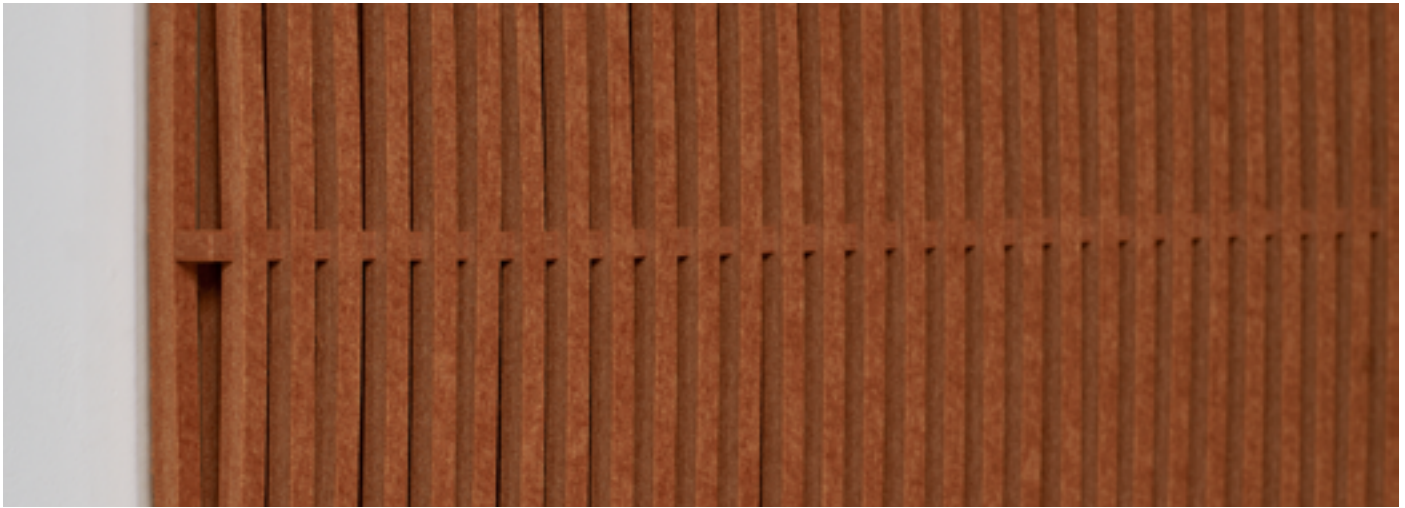


# Ecooustic® Weave

—  
A unique three-dimensional acoustic panel  
inspired by the fluidity of sound waves





<b>PRODUCT</b>	Ecoustic® Weave Panel								
<b>COMPOSITION</b>	100% PET (60% recycled content)								
<b>THICKNESS</b>	12-36mm approx.								
<b>WEIGHT</b>	Each panel weighs 8.5kgs approx.								
<b>DIMENSIONS</b>	1200mm (w) x 2700mm (l) x 36mm (d)								
<b>SUPPLY</b>	Each panel includes 2 x Split Battens								
<b>LIGHTFASTNESS</b> ISO 105-B02	>7 Interior products must be protected from direct heat + sunlight								
<b>FIRE RATINGS</b> AS/NZS 1530.3	<table border="0"> <tr> <td>Ignitability</td> <td>8</td> </tr> <tr> <td>Spread of Flame</td> <td>0</td> </tr> <tr> <td>Heat Evolved</td> <td>1</td> </tr> <tr> <td>Smoke Developed</td> <td>5</td> </tr> </table>	Ignitability	8	Spread of Flame	0	Heat Evolved	1	Smoke Developed	5
Ignitability	8								
Spread of Flame	0								
Heat Evolved	1								
Smoke Developed	5								
<b>AS/ISO 9705</b>	BCA Group 1, SMOGRA <100 NZBC Group 1-S								
<b>ASTM E84</b>	12mm: Class A								
<b>ACOUSTIC</b>	NRC 0.6								
<b>APPLICATION</b>	Wall panel - Mounted Split Batten								
<b>WARRANTY</b>	5 year conditional warranty against manufacturing defects. This applies to internal installation only, outdoor use will void any warranty								

**Please Note**

Variation in thickness, fibre mix, colour as well as flecks + surface blemishes are an inherent + unavoidable feature. Variations from panel to panel can occur, panel joins may be obvious upon installation creating a panelling effect. Installation may require onsite adjustment by the contractor to achieve a professional finish + minimal variation. Results from performance tests are guidelines only.

**Moisture Absorption**

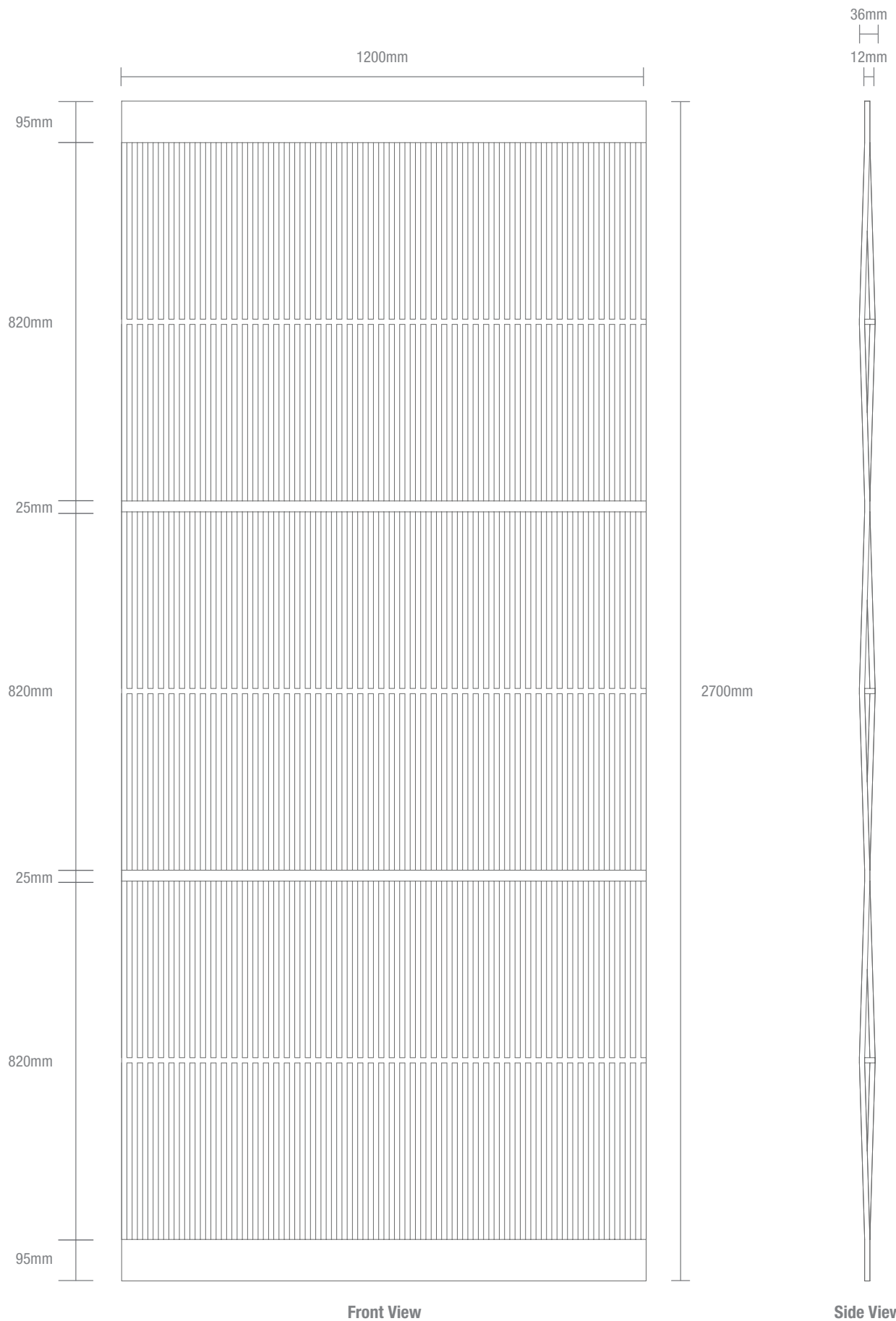
Exposure to an atmosphere of 50% and 95% RH for four days provides moisture absorption of less than 0.2% per volume. As Ecoustic Weave is 100% polyester, it will not degrade over time due to moisture, mildew or rot in office environments.

**Toxicity**

Polyester is non-toxic and is classed the same as wood under the State of New York Article 15 Part 1120. Ecoustic Weave does not contain any Red List Chemicals (USA EPA).

**HOW TO SPECIFY**

<b>PRODUCT</b>	Ecoustic® Weave Panel
<b>COLOUR</b>	Select from SC 12mm colours



## Solid Colour 12mm



Snowdrop



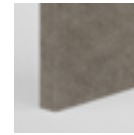
Ecrú



Almond



Horizon



Fawn



Truffle



Sand



Buff



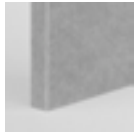
Dusk



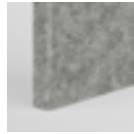
Kiln



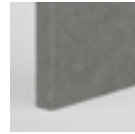
Oxide



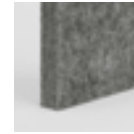
Cool



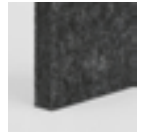
Atom



Cirrus



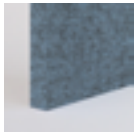
Tungsten



Galaxy



Denim



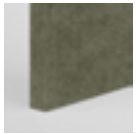
Jay



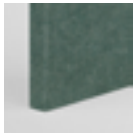
Night



Cave



Olive



Isle



Azure



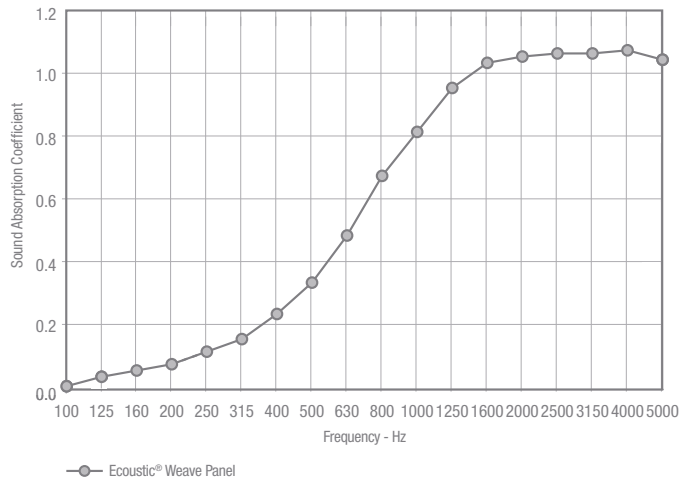
Wild

Please refer to physical sample finish as colour may vary from screen

The sound absorption has been tested in accordance with AS/ISO 354

NRC 0.6

For complete test reports please contact your local distributor



Frequency	$\alpha_S$ Ecoustic Weave
100	0.01
125	0.04
160	0.06
200	0.08
250	0.12
315	0.16
400	0.24
500	0.34
630	0.49
800	0.68
1000	0.82
1250	0.96
1600	1.04
2000	1.06
2500	1.07
3150	1.07
4000	1.08
5000	1.05
NRC	0.7



## CERTIFICATIONS + STANDARDS

- Environmental Product Declaration (EPD)
- Declare Red List Free
- Cradle to Cradle Bronze
- Environmental Management System ISO 14001:2015
- Low VOC

## ENERGY + EMISSIONS

- Embodied carbon: 6.5kg CO2eq per kg
- Production facility uses 30% renewable energy

## WATER + CHEMICALS

- No water is used in production of Ecoustic® Weave Panels
- Ecoustic® Weave Panels do not contain any Banned List chemicals
- Third-party certifications assess chemical safety to 99% of material weight

## CIRCULARITY + LIFECYCLE

- Ecoustic® Weave Panels are a pure Technical Nutrient in the circular economy
- Ecoustic® Weave Panels contain 60% post-consumer recycled PET
- Ecoustic® Weave Panels are designed for disassembly + reuse, Instyle's Rail profiles + Battens allow for adhesive-free installation + easy material separation at the end of the product lifecycle
- Ecoustic® Weave Panels can be accepted for takeback as part of our REVIVE® Product Stewardship Scheme

## LAND USE + BIODIVERSITY

- Impacts on land and biodiversity such as resource use, output flows + waste, acidification + eutrophication are quantified in the product's Lifecycle Assessment (LCA) available in the EPD

## SOCIAL IMPACT

- OHS Management System ISO 45001
- Supplier has an established human rights policy + audit management process
- Supply chain Code of Conduct in place
- Cradle-to-Cradle certification requires a risk assessment be completed to address any health, safety + human rights risks

## BUILDING RATING SYSTEMS

Ecoustic® Weave Panels will contribute the following points for Green Star, LEED + WELL building standards:

Criteria	Green Star	LEED	WELL
Recycled Content	√	√	NA
Low VOC	√	√	√
Stewardship Program	√	√	NA
EPD	√	√	NA
Cradle to Cradle Bronze Certification	-	√	√
Declare Label	√	√	√
Manufacturer EMS	√	NA	NA
Toxic Material Reduction	NA	NA	√

## GREEN STAR

- Indoor Pollutants/Low VOC (12)
- Recycled Content Product (21.1 B)
- Environmental Product Declarations (21.1 C)
- Third Party Certification (21.1 D)
- Product Stewardship Program (21.1 E)

## LEED

- Low Emitting Materials / Low VOC (EQ credit)
- Recycled Content (MR credit)
- Environmental Product Declarations (MR credit)
- Material Ingredient Reporting (MR credit)
- Extended Producer Responsibility (MR credit)

## WELL

- Enhanced Material Restrictions (X05)
- Air Quality/VOC Restrictions (A01 + X06)
- Materials Transparency (X07)
- Materials Optimisation (X08)
- Sound Reducing Surfaces (S05)

