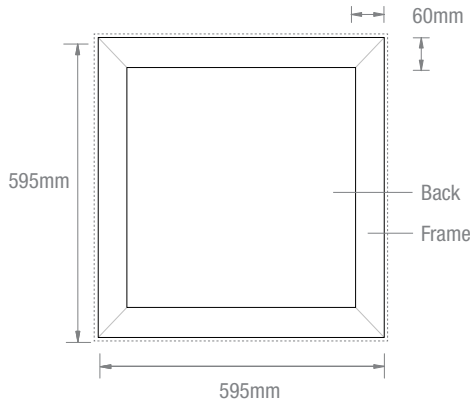


# Sculpt® Coffered Tile

—  
A timeless acoustic drop-in ceiling tile available in a wide range of colours + prints ideal for commercial interiors



## Bottom View - RCP



## Side View - In Grid

### Sculpt Coffered Shallow

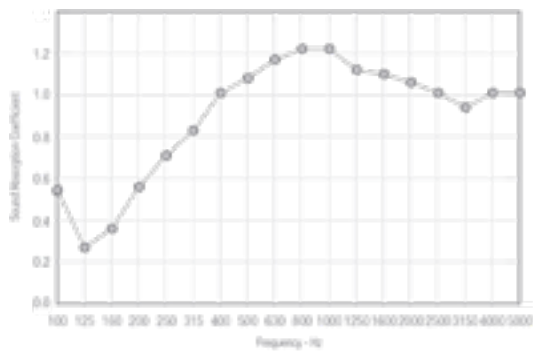


### Sculpt Coffered Deep



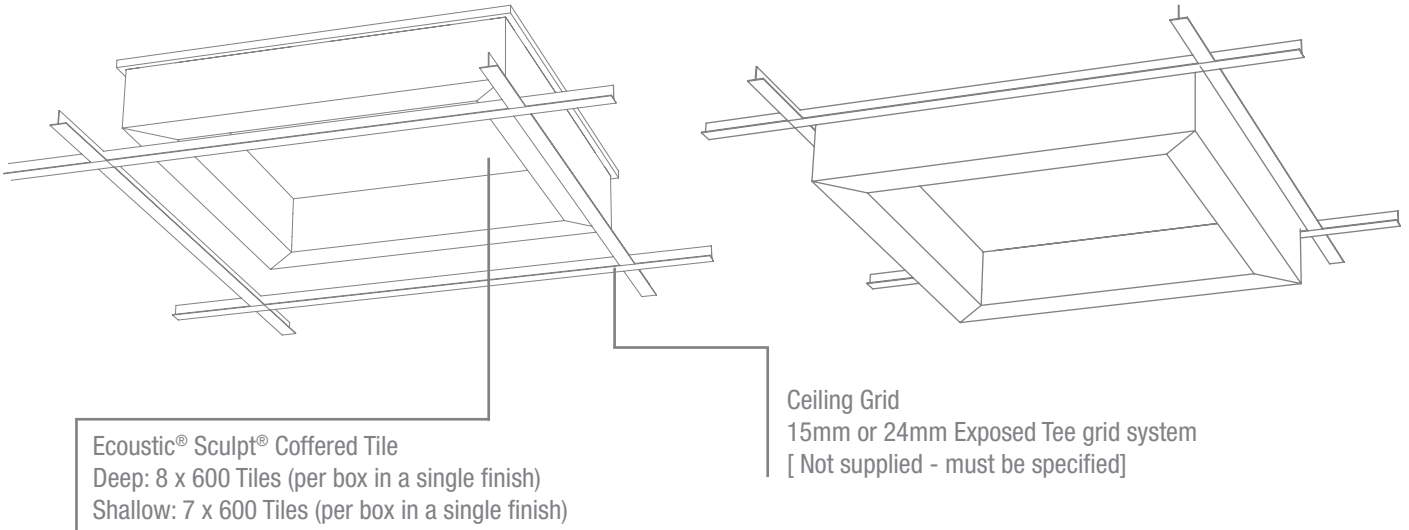
<b>PRODUCT</b>	Ecooustic® Sculpt® Coffered Ceiling Tile
<b>DESCRIPTION</b>	Ecooustic® Sculpt® Coffered is a high-performance acoustic drop-in ceiling tile available in two depths, Shallow or Deep, and a wide range of colours + prints
<b>DIMENSIONS</b>	600 Tile: 595mm (w) x 595mm (l) Shallow: 38mm (h) Deep: 93mm (h) Drops into new or existing T-Frame suspended ceiling systems with a 600 x 600mm grid
<b>COMPOSITION</b>	100% PET (60% recycled PET)
<b>ACOUSTIC</b>	NRC 1.0 / αw 1.0 / SAA 0.99

<b>FIRE TEST</b>	AS/ISO 9705	Group 1 SMOGRA <100 NZBC Group 1-S
<b>ASTM E84</b>		12mm: Class A
<b>APPLICATION</b>		Drop-in ceiling tile
<b>ORIGIN</b>		Designed + made in Australia
<b>WARRANTY</b>		A 12 month warranty is provided against manufacturing defects. This applies to internal installation only, outdoor use will void any warranty



Please contact your representative for CAD drawings

HOW TO SPECIFY	
<b>DESIGN</b>	Ecooustic® Sculpt® Coffered Shallow or Ecooustic® Sculpt® Coffered Deep
<b>TILE SIZE</b>	600 Tile
<b>T GRID SIZE</b>	Specify 15mm / 24mm / custom size T Frame
<b>COLOUR - FRAME</b>	Select from: Ecooustic® SC Panel 12mm colours Ecooustic® Timbre print Ecooustic® Timbre Point print
<b>COLOUR - BACK</b>	Select from: Ecooustic® SC Panel 12mm colours Ecooustic® Timbre print Ecooustic® Timbre Point print Frame and Back components may be specified in different colourways



Please note Frame and Back components may be specified in different colour finishes for the Sculpt® Coffered tile



### IMPORTANT

**Drop-In Ceiling Grid Specification:** Sculpt® Coffered is designed to be compatible with 15mm and 24mm Exposed Tee grid systems. Ensure the tile is suitable for your selected system and specify either 15mm or 24mm grid prior to ordering.

**Weight:** Each Sculpt® Coffered 600 ceiling tile weighs 2.3kg or less.

**Moisture Absorption:** After four days at 50°C, 95% RH the moisture absorbency of SC 12mm was less than 0.3% by weight. As Sculpt® Coffered is 100% polyester, it will not degrade over time due to moisture, mildew or rot in office environments.

**Fixtures:** Any fixture must be supported independently from the Sculpt® Coffered tile. The tiles can be cut on site to accommodate new and existing lighting and fixtures. When cutting use a new blade for each cut and ensure the area to be cut is fully supported. Cut the tile face with care.

**HVAC:** Ensure Sculpt® Coffered is compliant with the specified HVAC system. Sculpt® Coffered is suitable for Ducted Return Air.

**Back Loading:** Sculpt® Coffered is not suitable for back loading. Loads must be supported independently by the grid or through the use of additional fixtures.

**Toxicity:** Polyester is non-toxic and is classed the same as wood under the State of New York Article 15 Part 1120. The raw material SC Panel is certified with Declare and does not contain any Red List Chemicals (USA EPA).

# Sculpt® Coffered Tile Colours + Prints

## Solid Colour 12mm



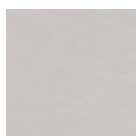
Snowdrop



Ecru



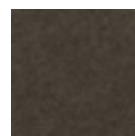
Almond



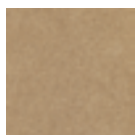
Horizon



Fawn



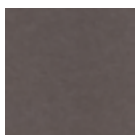
Truffle



Sand



Buff



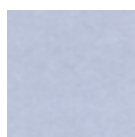
Dusk



Kiln



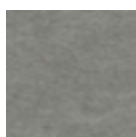
Oxide



Cool



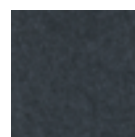
Atom



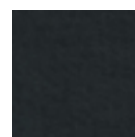
Cirrus



Tungsten



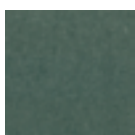
Galaxy



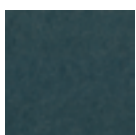
Cave



Olive



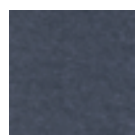
Isle



Azure



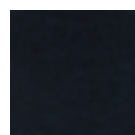
Wild



Denim



Jay



Night

## Timbre Print



Nordic



Maine



Rural



Heritage



Artisan



Smoked



Urban

## Timbre Point Print



Nordic WD



Maine WD



Rural BD



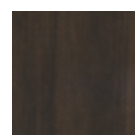
Heritage WD



Artisan BD



Smoked BD



Urban BD

WD: White Dot  
BD: Black Dot

Please refer to physical sample finish as colour may vary from screen



## CERTIFICATIONS + STANDARDS

- Environmental Product Declaration
- Declare Red List Free
- Cradle to Cradle Bronze
- Environmental Management System ISO 14001:2015
- Low VOC

## ENERGY + EMISSIONS

- Embodied carbon: 6.5kg CO2eq per kg
- Production facility uses 30% renewable energy

## WATER + CHEMICALS

- Sculpt® Coffered does not contain any Banned List chemicals
- Third-party certifications assess chemical safety to 99% of material weight

## CIRCULARITY + LIFECYCLE

- Sculpt® Coffered is a pure Technical Nutrient in the circular economy
- Sculpt® Coffered contains 60% post-consumer recycled PET
- Sculpt® Coffered is designed for disassembly + reuse, Instyle's drop-in system allows for adhesive-free installation + easy material separation at end of product lifecycle
- Sculpt® Coffered can be accepted for takeback as part of our REVIVE® Product Stewardship Scheme

## LAND USE + BIODIVERSITY

- Impacts on land and biodiversity such as resource use, output flows + waste, acidification + eutrophication are quantified in the product's Lifecycle Assessment (LCA) available in the EPD

## SOCIAL IMPACT

- OHS Management System ISO 45001
- Supplier has an established human rights policy + audit management process
- Supply chain Code of Conduct in place
- Cradle-to-Cradle certification requires a risk assessment be completed to address potential health, safety + human rights risks

## BUILDING RATING SYSTEMS

Sculpt® Coffered will contribute the following points for Green Star, LEED + WELL building standards:

Criteria	Green Star	LEED	WELL
Recycled Content	✓	✓	NA
Low VOC	✓	✓	✓
Stewardship Program	✓	✓	NA
EPD	✓	✓	NA
Cradle to Cradle Bronze	✓	✓	✓
Declare Label	✓	✓	✓
Manufacturer EMS	✓	NA	NA
Toxic Material Reduction	NA	NA	✓

## GREEN STAR

- Indoor Pollutants/Low VOC (12)
- Recycled Content Product (21.1 B)
- Environmental Product Declarations (21.1 C)
- Third Party Certification (21.1 D)
- Product Stewardship Program (21.1 E)

## LEED

- Low Emitting Materials / Low VOC (EQ credit)
- Recycled Content (MR credit)
- Environmental Product Declarations (MR credit)
- Material Ingredient Reporting (MR credit)
- Extended Producer Responsibility (MR credit)

## WELL

- Enhanced Material Restrictions (X05)
- Air Quality/VOC Restrictions (A01 + X06)
- Materials Transparency (X07)
- Materials Optimisation (X08)
- Sound Reducing Surfaces (S05)



Sculpt® Coffered Tiles with Timbre + Timbre Point are printed with leading HP low-VOC water-based latex ink technology.

## Latex Print Benefits

	HP Latex Print
<b>Non-Reactive</b>	✓
<b>Non-Hazardous Ink</b>	✓
<b>Low VOC</b>	✓
<b>Odourless</b>	✓
<b>Ink Supply Recycling</b>	Non-hazardous ink + free take back program

- HP Latex Inks contain up to 65% water. Using water-based inks eliminates exposure to high solvent concentrations, which simplifies ventilation, storage, and transportation requirements.
- **Ozone free:** No ground level ozone is generated with HP Latex Inks. Ground level ozone generation is associated with the UV ink curing process when mercury UV lamps are used.
- **No HAPs:** No Hazardous Air Pollutants (HAPs) present in HP Latex Inks. HAPs are those pollutants that are known or suspected to cause cancer or other serious health effects, such as reproductive effects or birth defects, or adverse environmental effects.
- **Odourless prints:** Intensity and hedonic testing indicates weak and neutral odour for HP Latex Ink and UV ink is rated as distinct and unpleasant odour.

## Ecologo Certification

A prominent, voluntary certification issued by UL and recognised worldwide. Ecologo® Certification to UL 2801 demonstrates that an ink meets a range of multi-attribute, lifecycle-based stringent criteria related to human health and environmental considerations. The standard criteria include testing for heavy metals content and solvents, requirements for low VOC content levels, as well as product recyclability. HP is the only printing company to have Ecologo® Certified inks.

## Greenguard Gold Certification

A prominent, voluntary third-party certification issued by UL and recognised worldwide. UL Greenguard Gold Certification to UL 2818 demonstrates that products are certified to UL Greenguard standards for low chemical emissions into indoor air during product usage. UL Greenguard Gold Certification indicates that products, including inks, printed substrates, and the combination of both for indoor applications, contribute to healthy indoor environments by minimising potential exposure to airborne chemicals.

## HP In Action

- HP Named to DJSI World Index, FSTE4Good, CDP Climate A List, and EcoVadis CSR Ratings
- Sourced 550,000 pounds of ocean-bound plastic to make new HP ink cartridges
- Committed to achieving 100% renewable electricity usage in global operations
- Pledged to enable better learning outcomes for more than 100M people by 2025
- First to publish supply chain responsibility code of conduct and industry-leading standards