



# CLASSIC

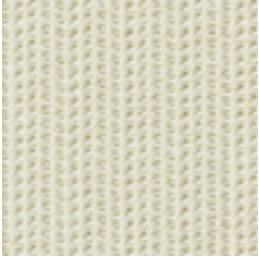
—

A signature subtle pinstripe texture from the LIFE Textiles® collection

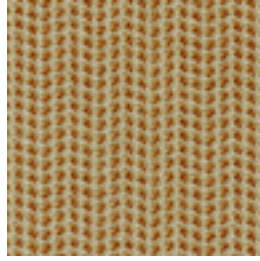
IINSTYLE

# CLASSIC

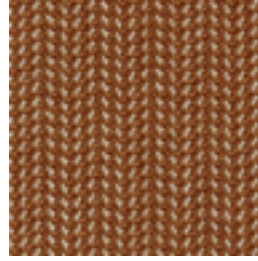
# LIFE Sustainable Textiles®



CLASSIC Original



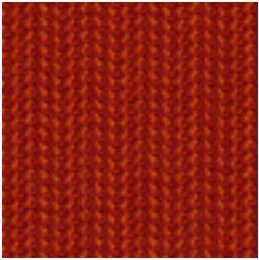
CLASSIC Genius



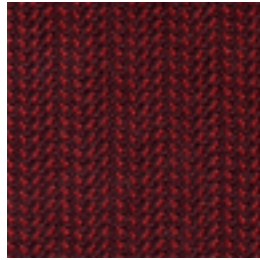
CLASSIC Fashion



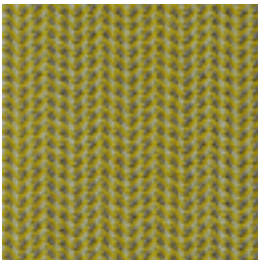
CLASSIC Painting



CLASSIC Dress



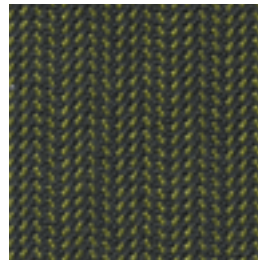
CLASSIC Wine



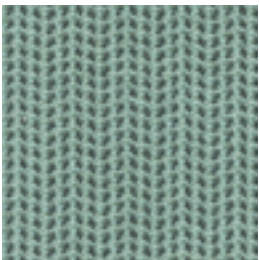
CLASSIC Show



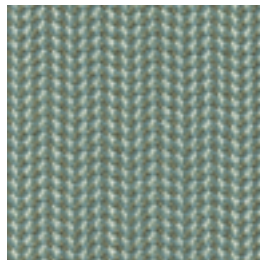
CLASSIC Utopia



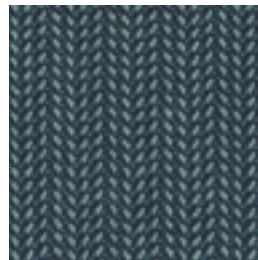
CLASSIC Example



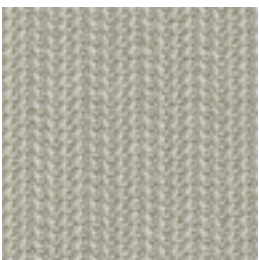
CLASSIC Car



CLASSIC Architecture



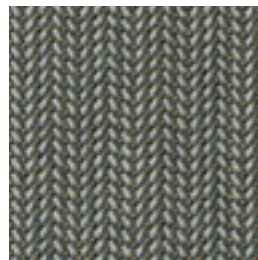
CLASSIC Race



CLASSIC Music



CLASSIC Quality



CLASSIC Invention



CLASSIC Tweed

Please refer to physical sample as colour may vary from screen



COMPOSITION	100% Australian worsted eco wool	FIRE RATINGS	AS/NZS 1530.3	Ignitability	12
WIDTH / WEIGHT	137cm / 350gsm			Spread of Flame	0
PATTERN REPEAT	H 1cm V 0.3cm			Heat Evolved	1
ROLL SIZE	50m approx.	AS/NZS 3837 (AS 5637.1)		Smoke Developed	5
CARE CODE	CTA 1			BCA Group 2	
ABRASION	45,000	ISO 5660.1		Av. Specific Extinction Area	108.2m2/kg
Martindale AS2001.2.25		IMO Resolution A.625(16)		NZBC Group 2S	
CTA RATING	<b>hc</b> HEAVY DUTY COMMERCIAL USE	Additional Fire Tests		Sections 8.2 + 8.3: Pass	
SEAM SLIPPAGE	Warp 4.5mm Weft 5.5mm	APPLICATION		California 117E, ASTM E84	
AS2001.2.22	Note: All seams must be overlapped or secured to prevent the premature failure of the seam due to fraying	ORIGIN		Upholstery seating, screens, wall panels	
PILLING	5	PLEASE NOTE		Made in Australia by LoomTex	
Martindale IWS196				Results from performance tests are guidelines only	
LIGHTFASTNESS	Light 6, Med-Dark 6-7				
ISO B05 102	Interior products must be protected from direct heat + sunlight				



**CERTIFICATIONS + STANDARDS**

- Low VOC
- OEKO-TEX 100

**ENERGY + EMISSIONS**

- Weaving mill has energy-saving initiatives in place

**WATER + CHEMICALS**

- Australian eco wool meets strict chemical minimisation criteria and does not contain any LBC Red List chemicals or Substances of Very High Concern (SVHC)
- Wool absorbs indoor air contaminants, improving air quality
- Wool is inherently fire, stain + soil resistant, hence no finishing treatments are required
- Production facility uses a mix of recycled + fresh water sources, with at least 30% rain-fed

**CIRCULARITY + LIFECYCLE**

- Wool is a pure Biological Nutrient in the circular economy, 100% biodegradable + rapidly renewable
- Classic can be accepted for takeback as part of our REVIVE® Product Stewardship Scheme
- Waste reduction measures in place at weaving mill

**LAND USE + BIODIVERSITY**

- Impacts on land + biodiversity from weaving mill such as energy sources, emissions to air + wastewater are monitored + reported on, met or exceeded regulatory standards

**SOCIAL IMPACT**

- Australian weaving mill meets all local labour law requirements, ensuring fair wages, safe working conditions, ethical treatment of employees + anti-discrimination
- Upstream suppliers are ISO 45001 certified, with an Occupational Health and Safety Management System to enhance safety + reduce workplace risks

**BUILDING RATING SYSTEMS**

Classic will contribute the following points for Green Star, LEED + WELL building standards:

Criteria	Green Star	LEED	WELL
Low VOC	✓	✓	✓
Bio-Based Materials	NA	✓	NA
Product Stewardship Program	✓	✓	NA
Toxic Material Reduction	NA	NA	✓

**GREEN STAR**

- Indoor Pollutants/Low VOC (12)
- Product Stewardship Program (21.1 E)
- Classic can be used on white furniture certified to Ecospecifier, AFRDI, ECNZ and GECA
- The Green Star Rating Tool states “Where at least 90% of an item’s mass is certified to a GBCA recognised standard, the item can be entered as a certified product at Level A, B or C”, therefore any textile can be used as textiles are almost always under 10% by weight of a furniture item

**LEED**

- Low Emitting Materials / Low VOC (EQ credit)
- Extended Producer Responsibility (MR credit)
- Responsible Sourcing of Bio-Based Materials (MR credit)

**WELL**

- Air Quality/VOC Restrictions (A01 + X06)
- Materials Optimisation (X08)

