

SOLSTICE

A high-performance
textile with a luxurious
chenille texture +
soft handle

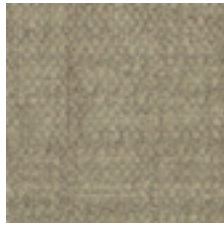
INSTYLE

SOLSTICE

High Performance Textile



SOLSTICE Serenity



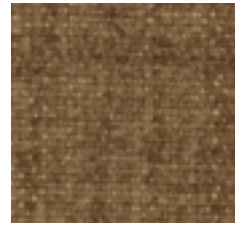
SOLSTICE Niche



SOLSTICE Vernal



SOLSTICE Elegant



SOLSTICE Aria



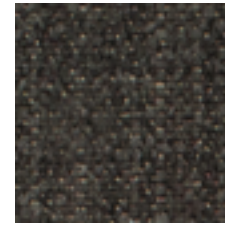
SOLSTICE Mesa



SOLSTICE Abode



SOLSTICE Whisper



SOLSTICE Capstone



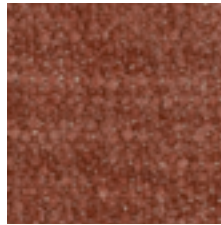
SOLSTICE Winter



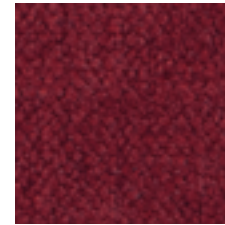
SOLSTICE Summer



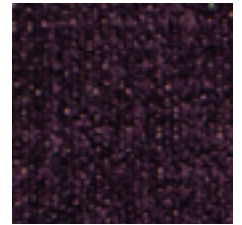
SOLSTICE Thrill



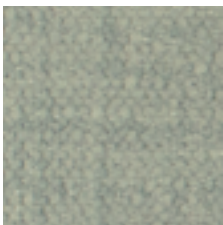
SOLSTICE Fancy



SOLSTICE Blossom



SOLSTICE Knowing



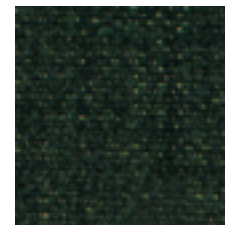
SOLSTICE Dreamer



SOLSTICE Lavish



SOLSTICE Peaceful



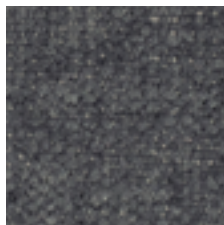
SOLSTICE Grove



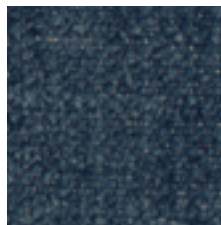
SOLSTICE Uplift



SOLSTICE Reflection



SOLSTICE Dwell



SOLSTICE Mirage

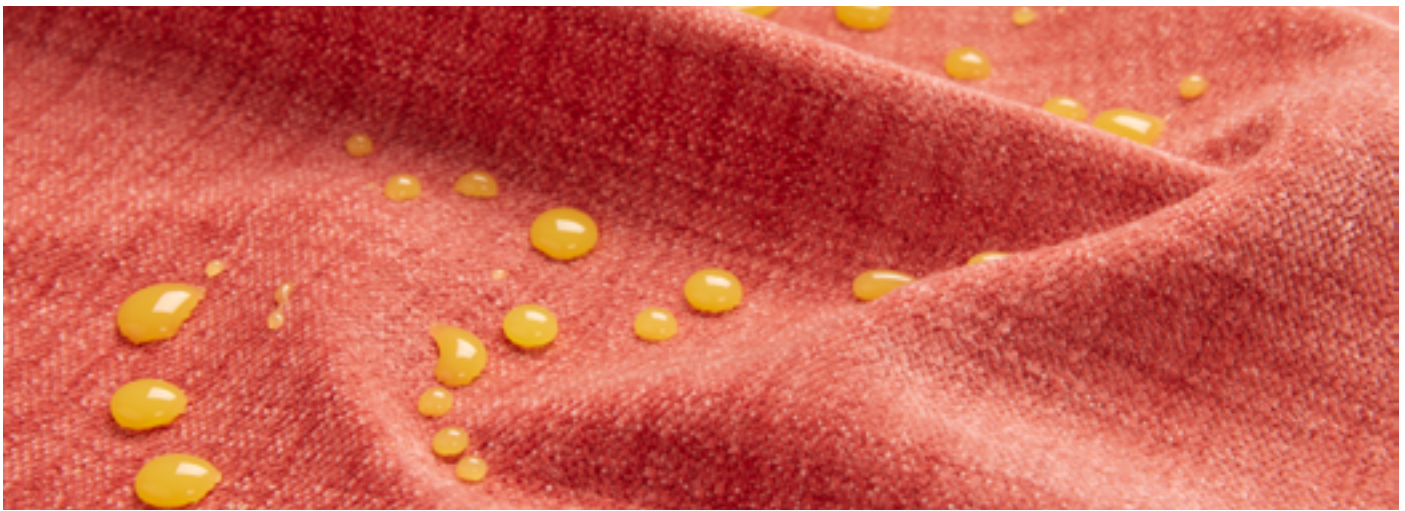



SOLSTICE Illusion



SOLSTICE Hindsight

Please refer to physical sample as colour may vary from screen



COMPOSITION	98% polyester, 2% silicone + 100% polyurethane backing	
WIDTH / ROLL SIZE	137cm / 32m approx.	
WEIGHT	498gsm	
PATTERN REPEAT	Nil	
CARE CODE	HP1	
ABRASION	40,000	
Martindale AS2001.2.25		
CTA RATING		HEAVY DUTY COMMERCIAL USE
SEAM SLIPPAGE	Warp 5mm Weft 5mm	
AS2001.2.22	Note: All seams must be overlocked or secured to prevent the premature failure of the seam due to fraying	
PILLING	5	
Martindale IWS196		
LIGHTFASTNESS	5	
ISO 105-B02	Interior products must be protected from direct heat + sunlight	
WATER REPELLENCY	Rating 95	
AATCC 22-2005 Spray Test		
AATCC 127-2013 Hydrostatic Pressure Test	Rating 270	
FIRE RATINGS		
AS/NZS 1530.3	Ignitability	12
	Spread of Flame	0
	Heat Evolved	4
	Smoke Developed	5
AS/NZS 3837 (AS 5637.1)	BCA Group 1	
	Av. Specific Extinction Area	89.6m ² /kg
ISO 5660.1	NZBC Group 1-S	
	Av. Specific Extinction Area	42.1m ² /kg

APPLICATION

Upholstery seating, screen, wall panel
Ideal for healthcare, hospitality, workplace, public building, education + residential applications

PLEASE NOTE

Results from performance tests are guidelines only

UPHOLSTERY GUIDANCE

It is important to pay attention to the nap direction, Solstice must be upholstered or sewn with the nap running in the same direction on panels / furniture

PERFORMANCE

- Combining the latest technology in integrated fabric systems, Solstice is a heavy-duty commercial textile with a moisture barrier + stain resistant finish to provide enhanced cleanability
- Unlike many high performance fabrics, Solstice features the additional performance properties of a bleach-cleanable fabric with a liquid barrier backing while retaining the beauty, character + softness of a woven textile that is easy to upholster
- Durable, moisture resistant, easy to clean + bleach cleanable, thereby increasing the life of the product



CERTIFICATIONS + STANDARDS

- Low VOC
- Health Product Declaration (HPD)

ENERGY + EMISSIONS

- Manufacturing facility uses renewable energy and has energy-saving initiatives in place

WATER + CHEMICALS

- Manufacturing facility uses recycled + rain-fed water
- Manufacturing facility is REACH, RoHS + Bluesign compliant
- Solstice does not pose any exposure risks associated with the chemicals in California Prop 65
- Solstice has no added PFAs, fire retardant, antibacterial or antimicrobial chemicals and is free of lead, heavy metals, BPA, TRIS, formaldehyde and conflict minerals

CIRCULARITY + LIFECYCLE

- Supplier has waste reduction measures in place

SOCIAL IMPACT

- Bluesign compliance ensures manufacturing facilities are assessed for worker OH&S, safe handling of chemicals, corporate social responsibility and legal + regulatory compliance

BUILDING RATING SYSTEMS

Solstice will contribute the following points for Green Star, LEED + WELL building standards:

Criteria	Green Star	LEED	WELL
Low VOC	✓	✓	✓
Health Product Declaration	NA	✓	✓

GREEN STAR

- Indoor Pollutants/Low VOC (12)
- Solstice can be used on white furniture certified to Ecospecifier, AFRDI, ECNZ and GECA
- The Green Star Rating Tool states “Where at least 90% of an item’s mass is certified to a GBCA recognised standard, the item can be entered as a certified product at Level A, B or C.”, therefore any leather can be used as leathers are almost always under 10% by weight of a furniture item

LEED

- Low Emitting Materials / Low VOC (EQ credit)
- Material Ingredient Optimisation / HPD (MR credit)

WELL

- Air Quality/VOC Restrictions (A01 + X06)
- Materials Transparency / HPD (X07)

