



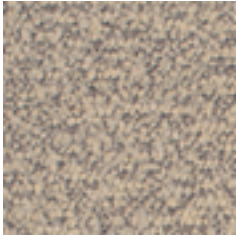
NURTURE

A high-performance
textile with a versatile,
contemporary multicolour
texture

INSTYLE

NURTURE

High Performance Textile



NURTURE Infinity



NURTURE Harmony



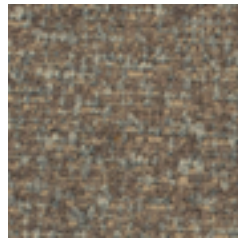
NURTURE Marbled



NURTURE Advance



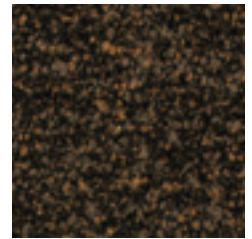
NURTURE Enchanted



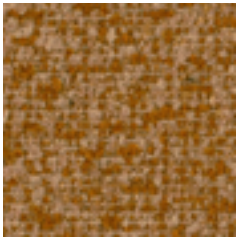
NURTURE Nook



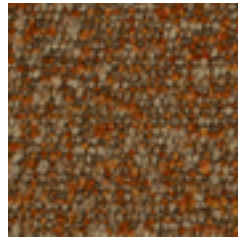
NURTURE Peak



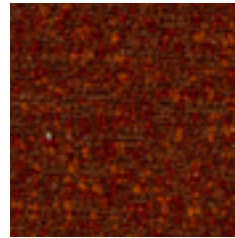
NURTURE Optimism



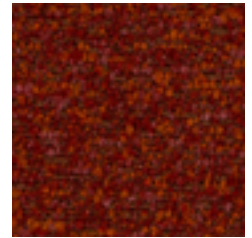
NURTURE Sundance



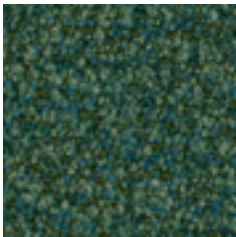
NURTURE Jazzy



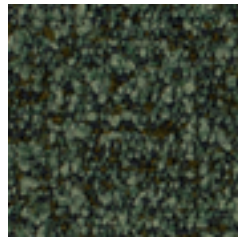
NURTURE Gem



NURTURE Radiant



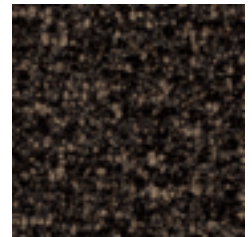
NURTURE Grow



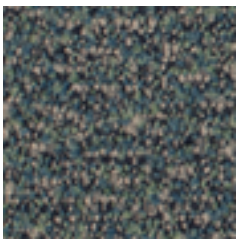
NURTURE Foster



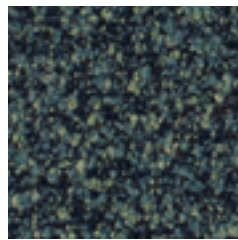
NURTURE Renew



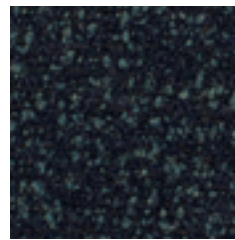
NURTURE Mettle



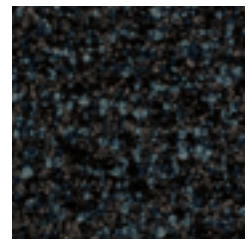
NURTURE Starfall



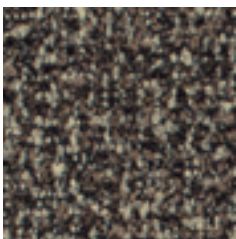
NURTURE Theme



NURTURE Kindness



NURTURE Curio



NURTURE Deft

Please refer to physical sample as colour may vary from screen



COMPOSITION	91% polyester, 7% acrylic, 2% silicone + 100% polyurethane backing
WIDTH / ROLL SIZE	137cm / 42m approx.
WEIGHT	554gsm
PATTERN REPEAT	Nil
CARE CODE	HP1
ABRASION Martindale AS2001.2.25	45,000
CTA RATING	hc HEAVY DUTY COMMERCIAL USE
SEAM SLIPPAGE AS2001.2.22	Warp 2mm Weft 4.3mm Note: All seams must be overlapped or secured to prevent the premature failure of the seam due to fraying
PILLING Martindale IWS196	5
LIGHTFASTNESS ISO 105-B02	7 Interior products must be protected from direct heat + sunlight
WATER REPELLENCY AATCC 22-2005 Spray Test	Rating 100
AATCC 127-2013 Hydrostatic Pressure Test	Rating 270
FIRE RATINGS AS/NZS 1530.3	Ignitability 12 Spread of Flame 0 Heat Evolved 4 Smoke Developed 5
AS/NZS 3837 (AS 5637.1)	BCA Group 1 Av. Specific Extinction Area 81.2m ² /kg
ISO 5660.1	NZBC Group 1-S Av. Specific Extinction Area 53.1m ² /kg

APPLICATION

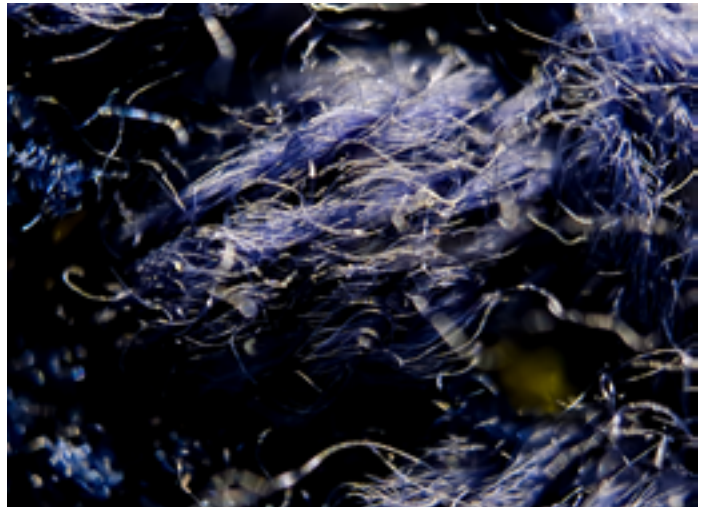
Upholstery seating, screen, wall panel
Ideal for healthcare, hospitality, workplace, public building, education + residential applications

PLEASE NOTE

Results from performance tests are guidelines only

PERFORMANCE

- Combining the latest technology in integrated fabric systems, NURTURE is a heavy-duty commercial textile with a moisture barrier + stain resistant finish to provide enhanced cleanability
- Unlike many high performance fabrics, NURTURE features the additional performance properties of a bleach-cleanable fabric with a liquid barrier backing while retaining the beauty, character + softness of a woven textile that is easy to upholster
- Durable, moisture resistant, easy to clean + bleach cleanable, thereby increasing the life of the product



CERTIFICATIONS + STANDARDS

- Low VOC
- Health Product Declaration (HPD)

ENERGY + EMISSIONS

- Manufacturing facility uses renewable energy and has energy-saving initiatives in place

WATER + CHEMICALS

- Manufacturing facility uses recycled + rain-fed water
- Manufacturing facility is REACH, RoHS + Bluesign compliant
- Nurture does not pose any exposure risks associated with the chemicals in California Prop 65
- Nurture has no added fire retardant, antibacterial or antimicrobial chemicals and is free of lead, heavy metals, BPA, TRIS, formaldehyde and conflict minerals

CIRCULARITY + LIFECYCLE

- Supplier has waste reduction measures in place

SOCIAL IMPACT

- Bluesign compliance ensures manufacturing facilities are assessed for worker OHS, safe handling of chemicals, corporate social responsibility, legal + regulatory compliance

BUILDING RATING SYSTEMS

Nurture will contribute the following points for Green Star, LEED + WELL building standards:

Criteria	Green Star	LEED	WELL
Low VOC	✓	✓	✓
Health Product Declaration	NA	✓	✓

GREEN STAR

- Indoor Pollutants/Low VOC (12)
- Nurture can be used on white furniture certified to Ecospecifier, AFRDI, ECNZ and GECA
- The Green Star Rating Tool states “Where at least 90% of an item’s mass is certified to a GBCA recognised standard, the item can be entered as a certified product at Level A, B or C.”, therefore any leather can be used as leathers are almost always under 10% by weight of a furniture item

LEED

- Low Emitting Materials / Low VOC (EQ credit)
- Material Ingredient Optimisation / HPD (MR credit)

WELL

- Air Quality/VOC Restrictions (A01 + X06)
- Materials Transparency / HPD (X07)

