

MIX

A beautiful soft marle fabric, ideal for acoustic drapery to reduce noise reverberation + soften sound within a space

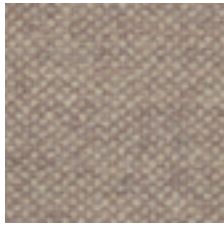
INSTYLE

MIX

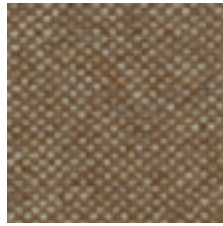
LIFE Textiles® Acoustic Drapery



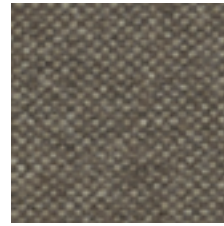
MIX Ivory



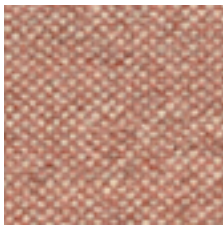
MIX Nude



MIX Harvest



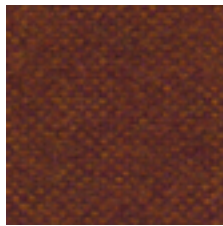
MIX Taupe



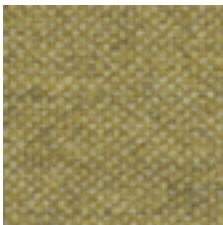
MIX Kindred



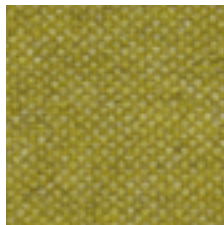
MIX Mandarin



MIX Fig



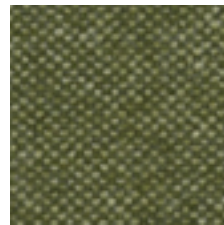
MIX Juice



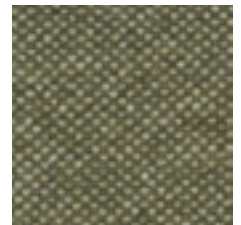
MIX Citrine



MIX Sage



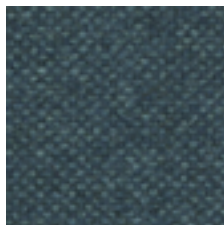
MIX Olive



MIX Acorn



MIX Glacier



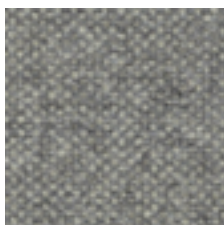
MIX Reef



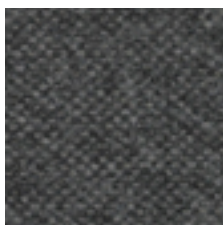
MIX Blueberry



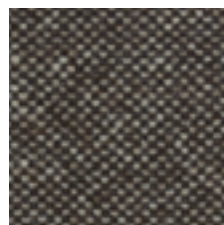
MIX Vapour



MIX Xenon



MIX Quartz

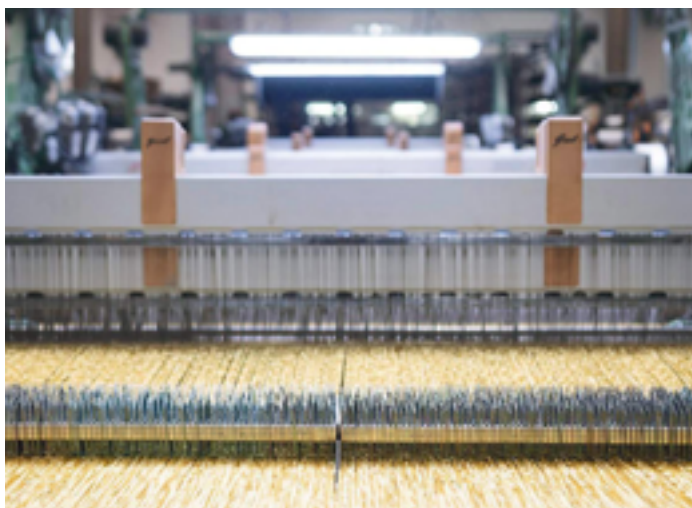


MIX Lava

Product may vary in colour due to the nature of the media
Please refer to website for current colour range



COMPOSITION	65% Australian wool, 20% nylon, 15% alpaca	ACOUSTIC AS/ISO 354	NRC 0.8 Acoustic drapery helps reduce unwanted reverberation whilst softening sound within a space
WIDTH / WEIGHT	137cm / 525gsm		
PATTERN REPEAT	nil	APPLICATION	Acoustic drapery*, upholstery seating, screens, wall panels
ROLL SIZE	50m approx.	IMPORTANT	*Acoustic drapery must be lined if used on an external window
CARE CODE	Wool Curtain Care	PLEASE NOTE	Results from performance tests are guidelines only
CTA RATING	 COMMERCIAL SCREEN FABRICS		
SEAM SLIPPAGE AS2001.2.22	Warp 6.5mm Weft 5mm Note: All seams must be overlapped or secured to prevent the premature failure of the seam due to fraying		
LIGHTFASTNESS	>6 Interior products must be protected from direct heat + sunlight		
FIRE RATINGS AS/NZS 1530.3	Ignitability 11 Spread of Flame 0 Heat Evolved 0 Smoke Developed 4		
AS/NZS 3837	BCA Group 2 Av. Specific Extinction Area 67.5 m ² /kg		
ISO 5660.1	NZBC Group 2S Av. Specific Extinction Area 64.3m ² /kg		
IMO 2010 FTP CODE PT 8 Important	Cigarette + Flame: Pass Please check your project requirements as the BCA flammability requirements for curtaining vary from state to state		



CERTIFICATIONS + STANDARDS

- Low VOC
- OEKO-TEX 100

ENERGY + EMISSIONS

- Production facility uses over 80% renewable energy

WATER + CHEMICALS

- Australian wool meets strict chemical minimisation criteria and does not contain any LBC Red List chemicals or Substances of Very High Concern (SVHCs)
- Production facility is REACH compliant
- Wool absorbs indoor air contaminants, improving air quality
- Wool is inherently fire, stain + soil resistant, hence no finishing treatments are required
- Production facility recycles approx. 250 cubic metres of cooling water daily

CIRCULARITY + LIFECYCLE

- Wool content (80%) is a Biological Nutrient in the circular economy and is 100% biodegradable + rapidly renewable
- Mix can be accepted for takeback as part of our REVIVE® Product Stewardship Scheme
- 100% of waste from production facility is sent for material or energy recovery

LAND USE + BIODIVERSITY

- Impacts on land and biodiversity from production facility such as energy sources, emissions to air and wastewater are monitored and in line with local regulatory standards

SOCIAL IMPACT

- Production facility meets all local labour law requirements, ensuring fair wages, safe working conditions, OH&S training, ethical treatment of employees + anti-discrimination

BUILDING RATING SYSTEMS

Mix will contribute the following points for Green Star, LEED + WELL building standards:

Criteria	Green Star	LEED	WELL
Low VOC	✓	✓	✓
Bio-Based Materials	NA	✓	NA
Product Stewardship Program	✓	✓	NA
Toxic Material Reduction	NA	NA	✓

GREEN STAR

- Indoor Pollutants/Low VOC (12)
- Product Stewardship Program (21.1 E)
- Mix can be used on white furniture certified to Ecospecifier, AFRDI, ECNZ and GECA
- The Green Star Rating Tool states “Where at least 90% of an item’s mass is certified to a GBCA recognised standard, the item can be entered as a certified product at Level A, B or C.” Therefore any textile can be used as textiles are almost always under 10% by weight of a furniture item.

LEED

- Low Emitting Materials / Low VOC (EQ credit)
- Extended Producer Responsibility (MR credit)
- Responsible Sourcing of Bio-Based Materials (80%, MR credit)

WELL

- Air Quality/VOC Restrictions (A01 + X06)
- Materials Optimisation (X08)

