

KINDRED

A beautiful sustainable
wool blend textile with an
exaggerated texture

INSTYLE

KINDRED

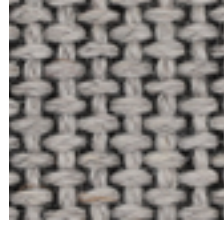
LIFE Sustainable Textiles®



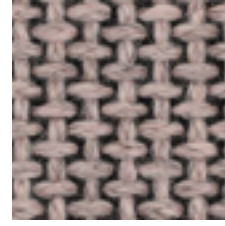
KINDRED Affinity



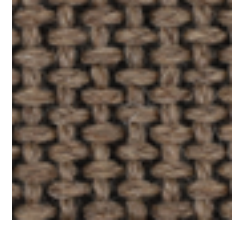
KINDRED Viewpoint



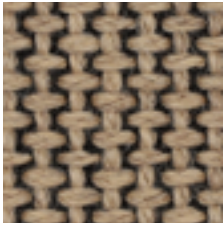
KINDRED Liaison



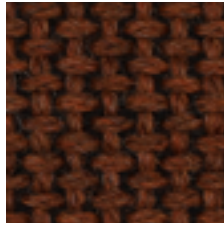
KINDRED Kind



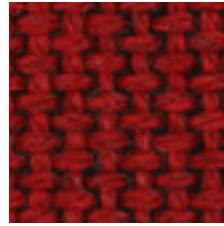
KINDRED Belief



KINDRED Thoughts



KINDRED Ideal



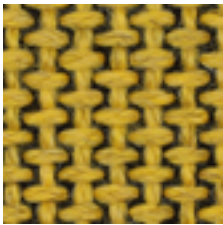
KINDRED Promise



KINDRED Vitality



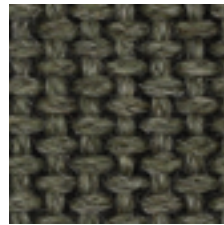
KINDRED Universe



KINDRED Zeal



KINDRED Relate



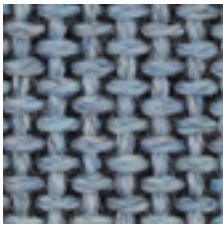
KINDRED Wellbeing



KINDRED Generation



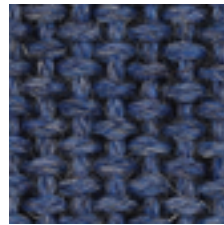
KINDRED Mind



KINDRED Friend



KINDRED Imagination



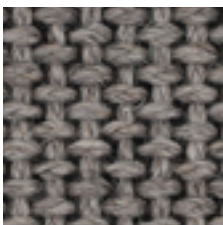
KINDRED Connection



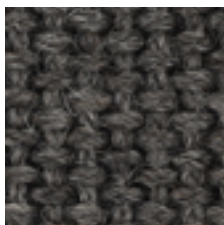
KINDRED Dimension



KINDRED Bond



KINDRED Soul

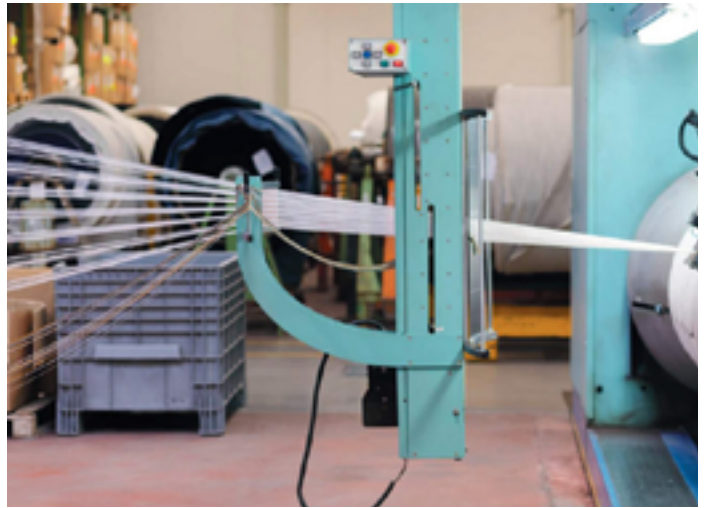
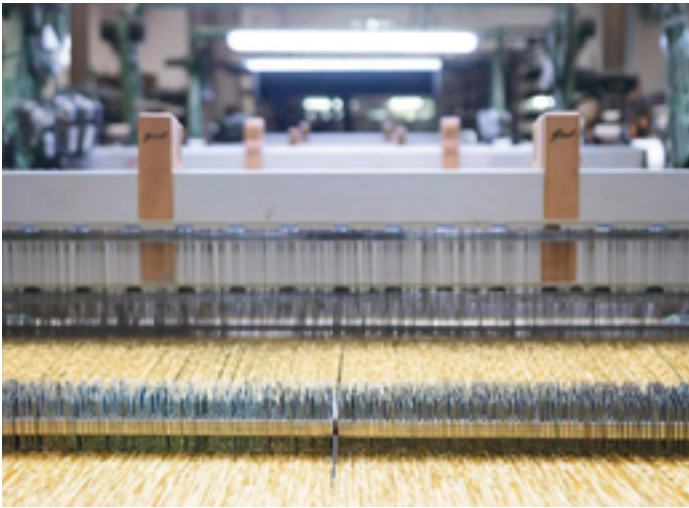


KINDRED Tribe

Physical product may vary in colour from screen, please refer to physical sample
Please refer to website for current colour range



COMPOSITION	65% wool, 24% cotton, 6% other fibres, 5% polyester	FIRE RATINGS	AS/NZS 1530.3	Ignitability	13
WIDTH / WEIGHT	137cm / 690gsm			Spread of Flame	0
PATTERN REPEAT	Nil			Heat Evolved	1
ROLL SIZE	25m approx.			Smoke Developed	4
CARE CODE	CTA 1			BCA Group 2	
ABRASION				Av. Specific Extinction Area	54.2 m2/kg
Martindale AS2001.2.25	50,000			NZBC Group 3	
				Av. Specific Extinction Area	15.4m2/kg
CTA RATING	hc HEAVY DUTY COMMERCIAL USE			APPLICATION	Upholstery seating, screen, wall panel
SEAM SLIPPAGE	Warp 4.5mm Weft 6mm			PLEASE NOTE	Results from performance tests are guidelines only
AS2001.2.22	Note: All seams must be overlocked or secured to prevent the premature failure of the seam due to fraying				
PILLING	4-5				
Martindale IWS196					
LIGHTFASTNESS	>6				
ISO 105 B02	Interior products must be protected from direct heat + sunlight				



CERTIFICATIONS + STANDARDS

- Low VOC
- OEKO-TEX 100

ENERGY + EMISSIONS

- Production facility uses over 80% renewable energy

WATER + CHEMICALS

- Australian wool meets strict chemical minimisation criteria and does not contain any LBC Red List chemicals or Substances of Very High Concern (SVHCs)
- Manufacturing facility is REACH compliant
- Wool absorbs indoor air contaminants, improving air quality
- Wool is inherently fire, stain + soil resistant, hence no finishing treatments are required
- Production facility recycles approx. 250 cubic meters of cooling water daily

CIRCULARITY + LIFECYCLE

- Wool + cotton content (89%) are Biological Nutrients in the circular economy and are 100% biodegradable + rapidly renewable
- Kindred can be accepted for takeback as part of our REVIVE® Product Stewardship Scheme
- 100% of waste from production facility is sent for material or energy recovery

LAND USE + BIODIVERSITY

- Impacts on land and biodiversity from production facility such as energy sources, emissions to air and wastewater are monitored and in line with local regulatory standards

SOCIAL IMPACT

- Production facility meets all local labour law requirements, ensuring fair wages, safe working conditions, OH&S training, ethical treatment of employees + anti-discrimination

BUILDING RATING SYSTEMS

Kindred will contribute the following points for Green Star, LEED + WELL building standards:

Criteria	Green Star	LEED	WELL
Low VOC	✓	✓	✓
Bio-Based Materials	NA	✓	NA
Product Stewardship Program	✓	✓	NA
Toxic Material Reduction	NA	NA	✓

GREEN STAR

- Indoor Pollutants/Low VOC (12)
- Product Stewardship Program (21.1 E)
- Kindred can be used on white furniture certified to Ecospecifier, AFRDI, ECNZ and GECA
- The Green Star Rating Tool states “Where at least 90% of an item’s mass is certified to a GBCA recognised standard, the item can be entered as a certified product at Level A, B or C.” Therefore any textile can be used as textiles are almost always under 10% by weight of a furniture item.

LEED

- Low Emitting Materials / Low VOC (EQ credit)
- Extended Producer Responsibility (MR credit)
- Responsible Sourcing of Bio-Based Materials (89%, MR credit)

WELL

- Air Quality/VOC Restrictions (A01 + X06)
- Materials Optimisation (X08)

