



# FEEL STRIPE

—  
A soft wool and alpaca marle  
textile, ideal for upholstery +  
acoustic drapery

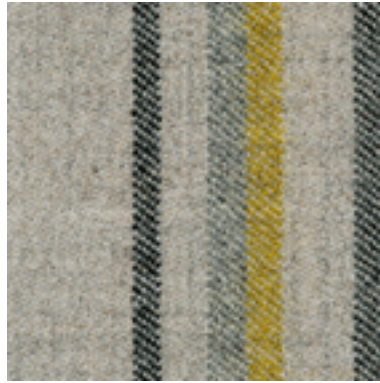
INSTYLE

# FEEL STRIPE

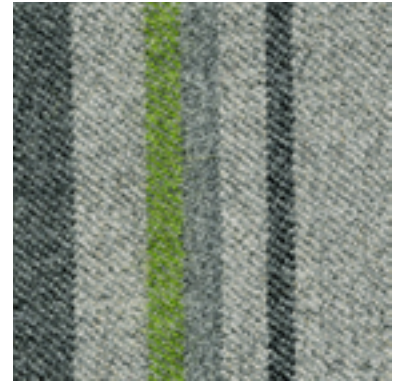
LIFE Textiles®



FEEL STRIPE Lido



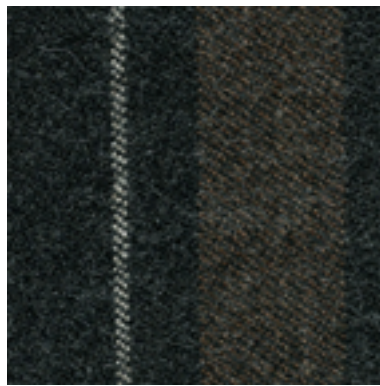
FEEL STRIPE Mimosa



FEEL STRIPE Kiwi



FEEL STRIPE Jaffa



FEEL STRIPE Savile Row



FEEL STRIPE Berry



FEEL STRIPE Vine

Patterns shown are not to scale  
Physical product may vary in colour from screen, please refer to physical sample  
Please refer to website for current colour range

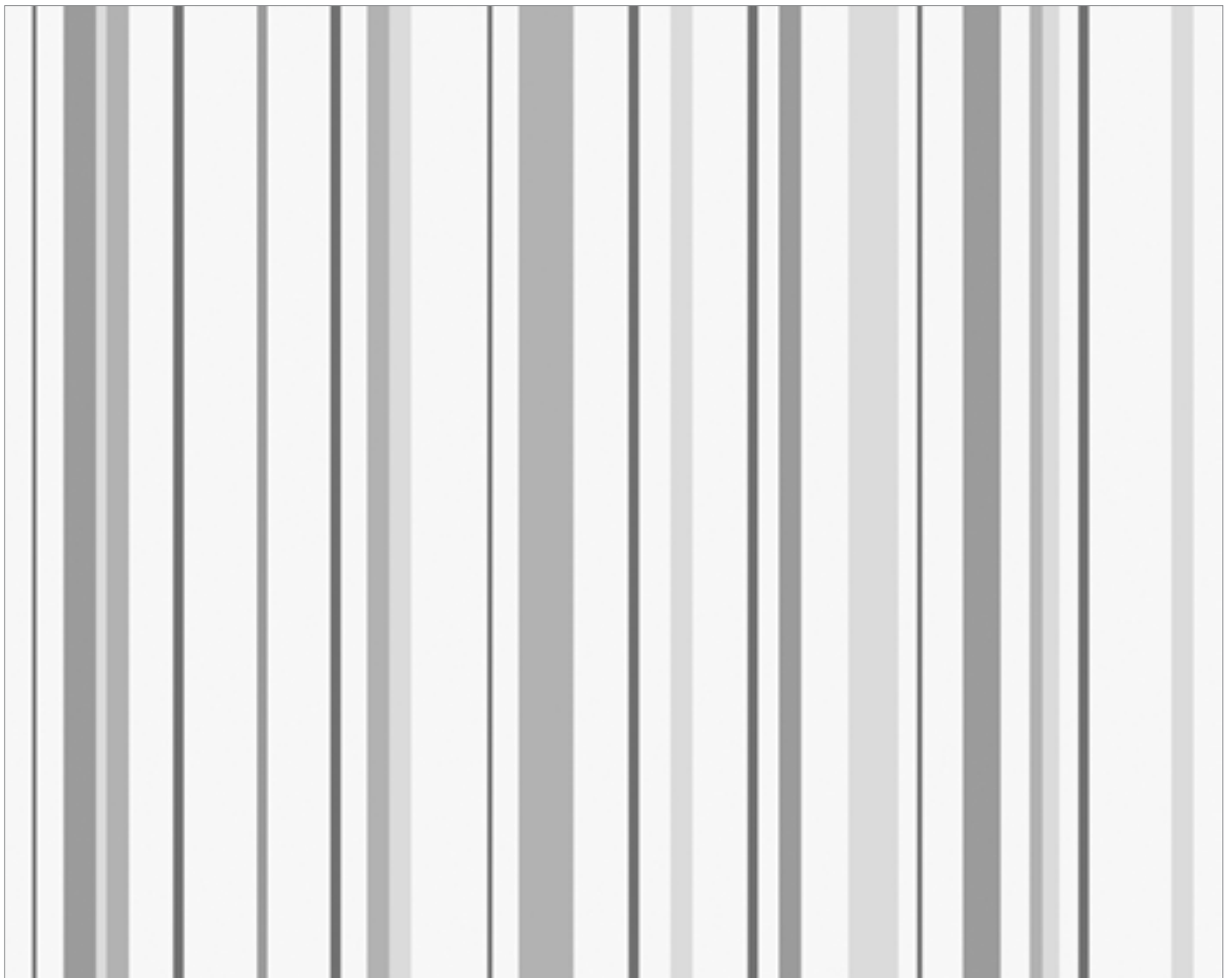


COMPOSITION	65% Australian worsted wool, 20% nylon, 15% alpaca
WIDTH / WEIGHT	140cm / 418gsm
PATTERN REPEAT	H 52.5cm V nil (railroaded)
ROLL SIZE	50m approx.
CARE CODE	CTA 1
ABRASION Martindale AS2001.2.25	46,500
CTA RATING	<b>hc</b> HEAVY DUTY COMMERCIAL USE
SEAM SLIPPAGE AS2001.2.22	Warp 3.3mm Weft 5.0mm Note: All seams must be overlapped or secured to prevent the premature failure of the seam due to fraying
PILLING Martindale IWS196	3-4
LIGHTFASTNESS ISO 105 B02	5 Interior products must be protected from direct heat + sunlight

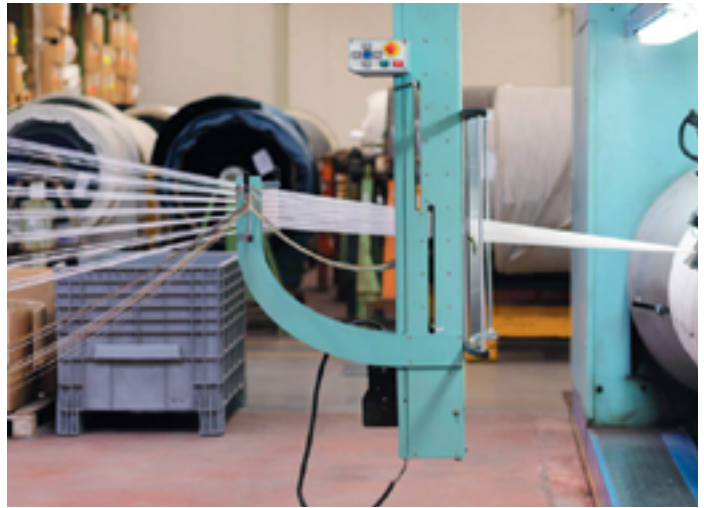
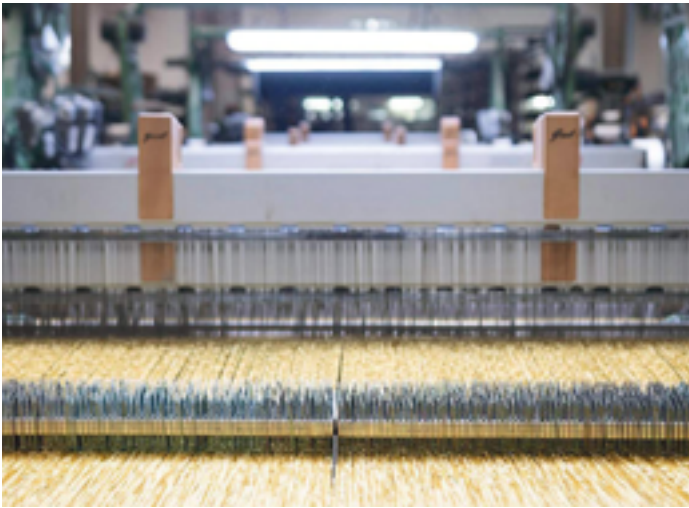
FIRE RATINGS AS/NZS 1530.3	Ignitability 13 Spread of Flame 0 Heat Evolved 1 Smoke Developed 5
AS/NZS 3837 (AS 5637.1)	BCA Group 2 Av. Specific Extinction Area 67.5 m <sup>2</sup> /kg
ISO 5660.1	NZBC Group 2S Av. Specific Extinction Area 64.3m <sup>2</sup> /kg
IMO Resolution A.625(16)	Sections 8.2 + 8.3: Pass
Additional Fire Tests	California 117E, NFPA 260 UFAC
ACOUSTIC AS/ISO 354	NRC 0.8 Acoustic drapery helps reduce unwanted reverberation whilst softening sound within a space
APPLICATION	Upholstery seating, screens, wall panels + acoustic drapery
PLEASE NOTE	Results from performance tests are guidelines only

# FEEL STRIPE PATTERN REPEAT

---



52.5cm approx.



**CERTIFICATIONS + STANDARDS**

- Low VOC
- OEKO-TEX 100

**ENERGY + EMISSIONS**

- Production facility uses over 80% renewable energy

**WATER + CHEMICALS**

- Australian wool meets strict chemical minimisation criteria and does not contain any LBC Red List chemicals or Substances of Very High Concern (SVHCs)
- Manufacturing facility is REACH compliant
- Wool absorbs indoor air contaminants, improving air quality
- Wool is inherently fire, stain + soil resistant, hence no finishing treatments are required
- Production facility recycles approx. 250 cubic meters of cooling water daily

**CIRCULARITY + LIFECYCLE**

- Wool content (80%) is a Biological Nutrient in the circular economy and is 100% biodegradable + rapidly renewable
- Feel Stripe can be accepted for takeback as part of our REVIVE® Product Stewardship Scheme
- 100% of waste from production facility is sent for material or energy recovery

**LAND USE + BIODIVERSITY**

- Impacts on land and biodiversity from production facility such as energy sources, emissions to air and wastewater are monitored and in line with local regulatory standards

**SOCIAL IMPACT**

- Production facility meets all local labour law requirements, ensuring fair wages, safe working conditions, OH&S training, ethical treatment of employees + anti-discrimination

**BUILDING RATING SYSTEMS**

Feel Stripe will contribute the following points for Green Star, LEED + WELL building standards:

Criteria	Green Star	LEED	WELL
Low VOC	✓	✓	✓
Bio-Based Materials	NA	✓	NA
Product Stewardship Program	✓	✓	NA
Toxic Material Reduction	NA	NA	✓

**GREEN STAR**

- Indoor Pollutants/Low VOC (12)
- Product Stewardship Program (21.1 E)
- Feel Stripe can be used on white furniture certified to Ecospecifier, AFRDI, ECNZ and GECA
- The Green Star Rating Tool states “Where at least 90% of an item’s mass is certified to a GBCA recognised standard, the item can be entered as a certified product at Level A, B or C.” Therefore any textile can be used as textiles are almost always under 10% by weight of a furniture item.

**LEED**

- Low Emitting Materials / Low VOC (EQ credit)
- Extended Producer Responsibility (MR credit)
- Responsible Sourcing of Bio-Based Materials (80%, MR credit)

**WELL**

- Air Quality/VOC Restrictions (A01 + X06)
- Materials Optimisation (X08)

