



FEEL

A beautiful soft wool and alpaca marle felt, ideal for upholstery + acoustic drapery

INSTYLE

FEEL

LIFE Textiles®



FEEL Young Again



FEEL Awesome



FEEL Respected



FEEL Confident



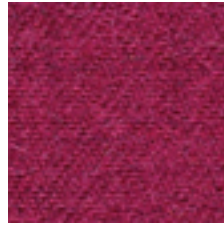
FEEL Invincible



FEEL Inspired



FEEL Calm



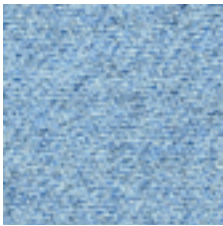
FEEL Fabulous



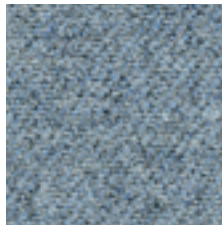
FEEL Amazing



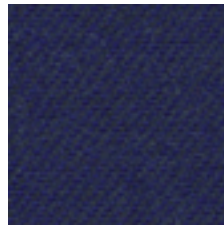
FEEL Beautiful



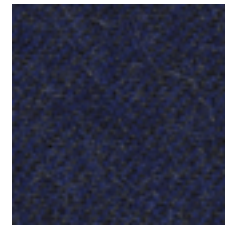
FEEL Wonderful



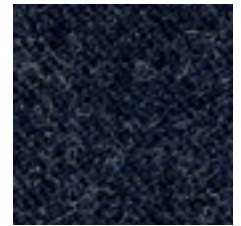
FEEL Sophisticated



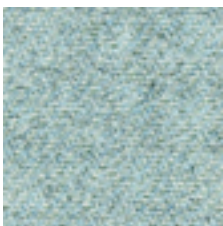
FEEL Precious



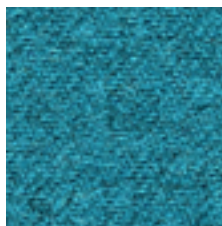
FEEL Chilled



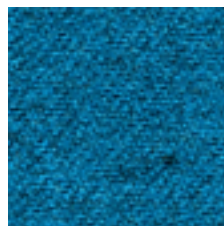
FEEL Secure



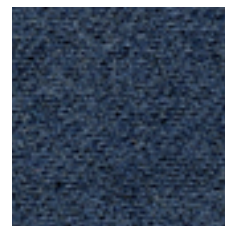
FEEL Playful



FEEL Lucky



FEEL Great



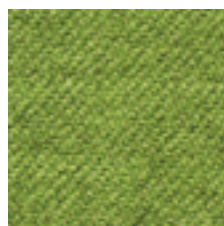
FEEL Liberated



FEEL Nostalgic



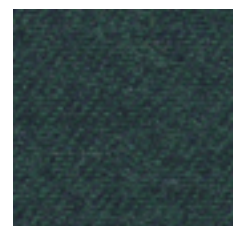
FEEL Thrilled



FEEL Free



FEEL Zen



FEEL Splendid

FEEL

LIFE Textiles®



FEEL Elated



FEEL Alive



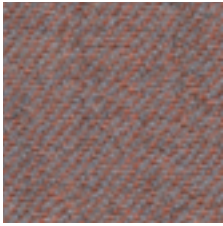
FEEL Unique



FEEL Satisfied



FEEL Positive



FEEL Peachy



FEEL At Home



FEEL Grounded



FEEL Refined



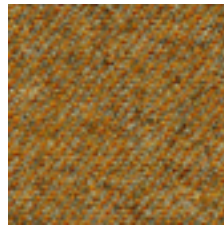
FEEL Wanted



FEEL Optimistic



FEEL Daring



FEEL Adventurous



FEEL Up For It



FEEL Loved



FEEL Jubilant



FEEL Merry



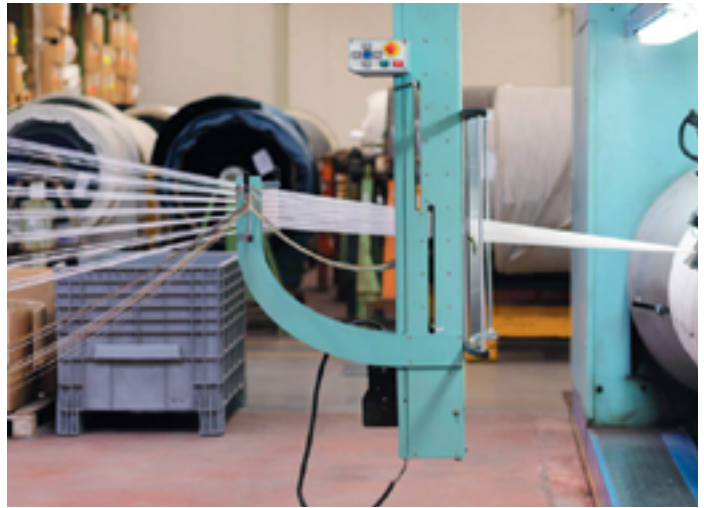
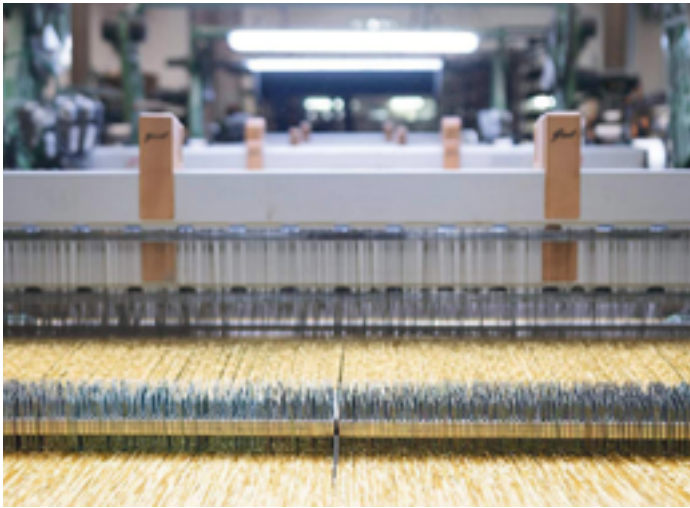
FEEL Excited

Product may vary in colour due to the nature of the media
Please refer to website for current colour range



COMPOSITION	65% Australian wool, 20% nylon, 15% alpaca
WIDTH / WEIGHT	140cm / 418gsm
PATTERN REPEAT	nil
ROLL SIZE	25m approx.
CARE CODE	CTA 1
ABRASION Martindale AS2001.2.25	46,500
CTA RATING	hc HEAVY DUTY COMMERCIAL USE
SEAM SLIPPAGE AS2001.2.22	Warp 3.3mm Weft 5mm Note: All seams must be overlocked or secured to prevent the premature failure of the seam due to fraying
PILLING Martindale IWS196	3-4
LIGHTFASTNESS ISO 105 B02	5 Interior products must be protected from direct heat + sunlight
FIRE RATINGS AS/NZS 1530.3	Ignitability 13 Spread of Flame 0 Heat Evolved 1 Smoke Developed 5
AS/NZS 3837 (AS 5637.1)	BCA Group 2 Av. Specific Extinction Area 67.5 m ² /kg
ISO 5660.1	NZBC Group 2S Av. Specific Extinction Area 64.3m ² /kg
IMO Resolution A.625(16)	Sections 8.2 + 8.3: Pass
Additional Fire Tests	California 117E, NFPA 260 UFAC

ACOUSTIC AS/ISO 354	NRC 0.8 - Acoustic drapery helps reduce unwanted reverberation whilst softening sound within a space
APPLICATION	Upholstery seating, screen, wall panel, acoustic drapery
PLEASE NOTE	Results from performance tests are guidelines only



CERTIFICATIONS + STANDARDS

- Low VOC
- OEKO-TEX 100

ENERGY + EMISSIONS

- Production facility uses over 80% renewable energy

WATER + CHEMICALS

- Australian wool meets strict chemical minimisation criteria and does not contain any LBC Red List chemicals or Substances of Very High Concern (SVHCs)
- Manufacturing facility is REACH compliant
- Wool absorbs indoor air contaminants, improving air quality
- Wool is inherently fire, stain + soil resistant, hence no finishing treatments are required
- Production facility recycles approx. 250 cubic meters of cooling water daily

CIRCULARITY + LIFECYCLE

- Wool content (80%) is a Biological Nutrient in the circular economy and is 100% biodegradable + rapidly renewable
- Feel can be accepted for takeback as part of our REVIVE® Product Stewardship Scheme
- 100% of waste from production facility is sent for material or energy recovery

LAND USE + BIODIVERSITY

- Impacts on land and biodiversity from production facility such as energy sources, emissions to air and wastewater are monitored and in line with local regulatory standards

SOCIAL IMPACT

- Production facility meets all local labour law requirements, ensuring fair wages, safe working conditions, OH&S training, ethical treatment of employees + anti-discrimination

BUILDING RATING SYSTEMS

Feel will contribute the following points for Green Star, LEED + WELL building standards:

Criteria	Green Star	LEED	WELL
Low VOC	✓	✓	✓
Bio-Based Materials	NA	✓	NA
Product Stewardship Program	✓	✓	NA
Toxic Material Reduction	NA	NA	✓

GREEN STAR

- Indoor Pollutants/Low VOC (12)
- Product Stewardship Program (21.1 E)
- Feel can be used on white furniture certified to Ecospecifier, AFRDI, ECNZ and GECA
- The Green Star Rating Tool states “Where at least 90% of an item’s mass is certified to a GBCA recognised standard, the item can be entered as a certified product at Level A, B or C.” Therefore any textile can be used as textiles are almost always under 10% by weight of a furniture item.

LEED

- Low Emitting Materials / Low VOC (EQ credit)
- Extended Producer Responsibility (MR credit)
- Responsible Sourcing of Bio-Based Materials (80%, MR credit)

WELL

- Air Quality/VOC Restrictions (A01 + X06)
- Materials Optimisation (X08)

