

# ESPRIT

---

A contemporary wool + alpaca blend textile with a subtle pattern

INSTYLE



ESPRIT Atom



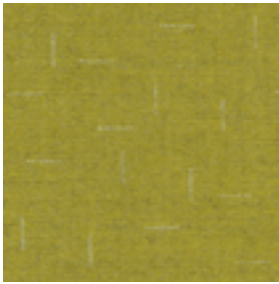
ESPRIT Chrysler



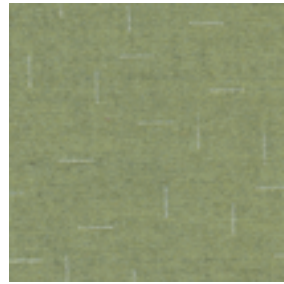
ESPRIT Visionary



ESPRIT Hero



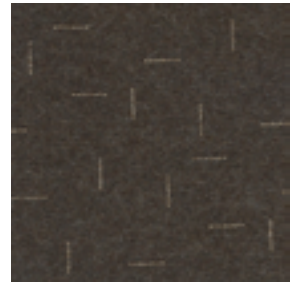
ESPRIT Dixie



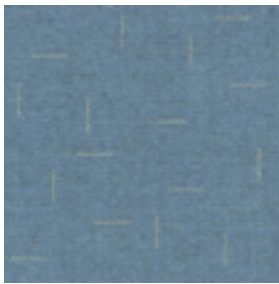
ESPRIT Folly



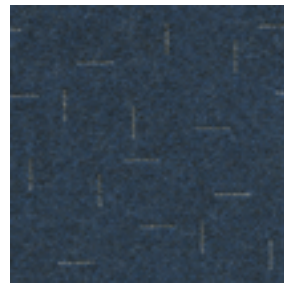
ESPRIT Appeal



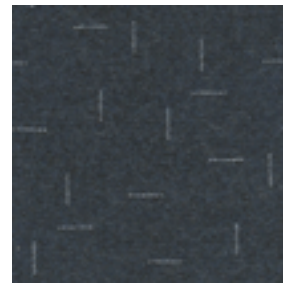
ESPRIT Intuition



ESPRIT Comet



ESPRIT Lunar



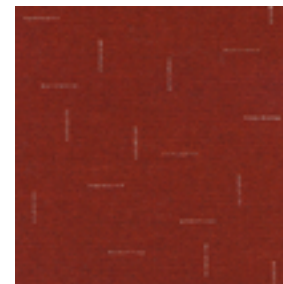
ESPRIT Halcyon



ESPRIT Candy



ESPRIT Emotive



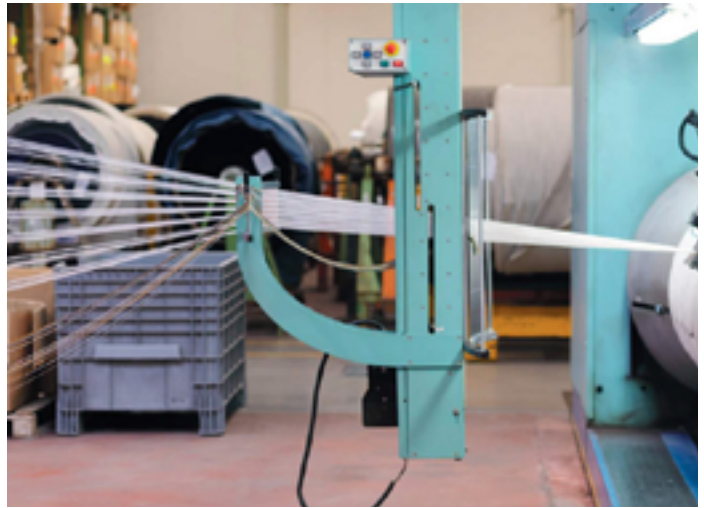
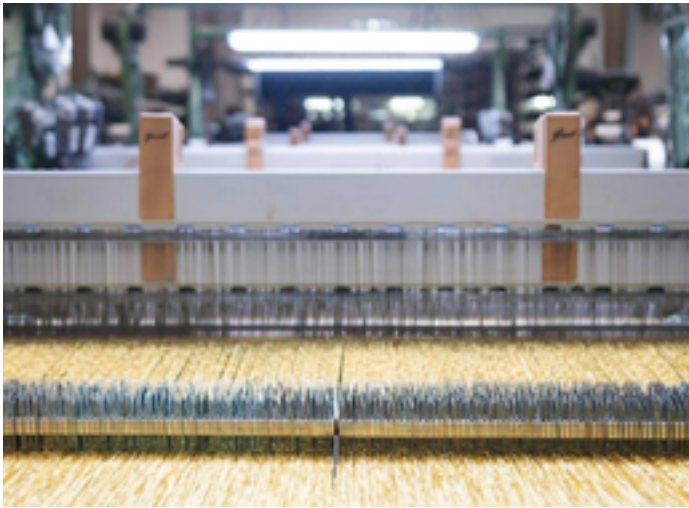
ESPRIT Desire

Physical product may vary in colour from screen, please refer to physical sample  
Please refer to website for current colour range





COMPOSITION	52% Australian wool, 15% polyester, 13% cotton, 10% alpaca, 7% nylon, 3% acrylic	FIRE RATINGS	AS/NZS 1530.3	Ignitability	9
WIDTH / WEIGHT	140cm / 534gsm			Spread of Flame	0
PATTERN REPEAT	H 15cm V 15cm		AS/NZS 3837	Heat Evolved	0
ROLL SIZE	25m approx.			Smoke Developed	4
CARE CODE	CTA 1		ISO 5660.1	BCA Group 1	
ABRASION	55,500			Av. Specific Extinction Area	245.3 m <sup>2</sup> /kg
Martindale AS2001.2.25				NZBC Group 1S	
CTA RATING	<b>hc</b> HEAVY DUTY COMMERCIAL USE	APPLICATION		Av. Specific Extinction Area	139.6m <sup>2</sup> /kg
SEAM SLIPPAGE	Warp 5.6mm Weft 5.6mm	PLEASE NOTE		upholstery seating, screen, wall panel	
AS2001.2.22	Note: All seams must be overlocked or secured to prevent the premature failure of the seam due to fraying			Results from performance tests are guidelines only	
PILLING	3/4				
Martindale IWS196					
LIGHTFASTNESS	7				
ISO 105 B02	Interior products must be protected from direct heat + sunlight				



**CERTIFICATIONS + STANDARDS**

- Low VOC
- OEKO-TEX 100

**ENERGY + EMISSIONS**

- Production facility uses over 80% renewable energy

**WATER + CHEMICALS**

- Australian wool meets strict chemical minimisation criteria and does not contain any LBC Red List chemicals or Substances of Very High Concern (SVHCs)
- Manufacturing facility is REACH compliant
- Wool absorbs indoor air contaminants, improving air quality
- Wool is inherently fire, stain + soil resistant, hence no finishing treatments are required
- Production facility recycles approx. 250 cubic meters of cooling water daily

**CIRCULARITY + LIFECYCLE**

- Wool + cotton content (75%) are Biological Nutrients in the circular economy and are 100% biodegradable + rapidly renewable
- Esprit can be accepted for takeback as part of our REVIVE® Product Stewardship Scheme
- 100% of waste from production facility is sent for material or energy recovery

**LAND USE + BIODIVERSITY**

- Impacts on land and biodiversity from production facility such as energy sources, emissions to air and wastewater are monitored and in line with local regulatory standards

**SOCIAL IMPACT**

- Production facility meets all local labour law requirements, ensuring fair wages, safe working conditions, OH&S training, ethical treatment of employees + anti-discrimination

**BUILDING RATING SYSTEMS**

Esprit will contribute the following points for Green Star, LEED + WELL building standards:

Criteria	Green Star	LEED	WELL
Low VOC	✓	✓	✓
Bio-Based Materials	NA	✓	NA
Product Stewardship Program	✓	✓	NA
Toxic Material Reduction	NA	NA	✓

**GREEN STAR**

- Indoor Pollutants/Low VOC (12)
- Product Stewardship Program (21.1 E)
- Esprit can be used on white furniture certified to Ecospecifier, AFRDI, ECNZ and GECA
- The Green Star Rating Tool states “Where at least 90% of an item’s mass is certified to a GBCA recognised standard, the item can be entered as a certified product at Level A, B or C.” Therefore any textile can be used as textiles are almost always under 10% by weight of a furniture item.

**LEED**

- Low Emitting Materials / Low VOC (EQ credit)
- Extended Producer Responsibility (MR credit)
- Responsible Sourcing of Bio-Based Materials (75%, MR credit)

**WELL**

- Air Quality/VOC Restrictions (A01 + X06)
- Materials Optimisation (X08)

