

ELMOTREASURE

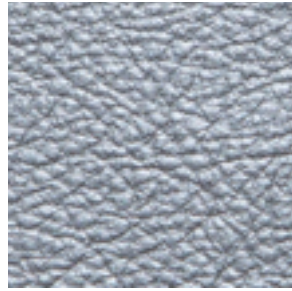
A modern living room setting. In the foreground, a white leather sofa with a metallic finish is shown from a side-rear perspective. The sofa has a dark metal frame and thick, tufted cushions. In the background, a brown leather armchair is visible, and a cylindrical side table stands next to the sofa. The room has a warm, minimalist aesthetic with a light-colored wall and a dark rug.

—
A chrome-free European
leather with a beautiful soft
metallic finish

INSTYLE



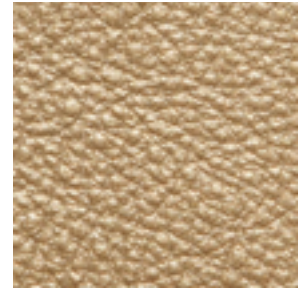
00120



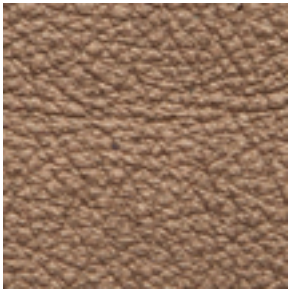
11097



54099




04098



43130

Leather may vary in colour due to the nature of the media
Please refer to website for current colour range



AVERAGE HIDE SIZE	5 sqm
THICKNESS / WEIGHT	1.1 - 1.3mm / 980gsm
LEATHER TYPE	Semi-Aniline 
COLOURFASTNESS TO-AND-FRO RUBBING ENISO 11640 + 11641	Dry 4 Wet 4 Perspiration 4
LIGHTFASTNESS EN ISO 105-B02	6
FINISH ADHESION EN ISO 11644	>2N / 10mm
pH AND ΔpH EN ISO 4045	pH >3.2 ΔpH ≤ 0.7
TEAR STRENGTH EN ISO 3377-1	20 N
FIRE RATINGS AS/NZS 1530.3	Ignitability 16 Spread of Flame 0 Heat Evolved 2 Smoke Developed 4
AS/NZS 3837	BCA Group 2 Av. Specific Extinction Area 146m2/kg
Available on request	BS 5852 Crib 5, IMO A.652(16), EN1021:1+2, ENISO1716, ISO3795, California 117, ISO 8191:1+2, DIN53438

PLEASE NOTE

- Sourced from high quality raw hides, Semi-Aniline leathers have a natural grain and invisible water-based protective coating to ensure the leather is suitable for the most demanding situations while maintaining a soft handle
- A very fine pigment applied to the surface increases the leather's resistance to colour change caused by sunlight exposure
- Results from performance tests are guidelines only

CARE

- Leather Care for Finished Leathers is available from our website

SEATING COMFORT RATING



A rating to determine a leather's seating comfort based upon the leather's ability to breathe and absorb moisture. Tested to ASTM E 96 M-05. ELMOTREASURE achieves a Good Seating Comfort rating.



CERTIFICATIONS + STANDARDS

- Leather Working Group Gold
- Low VOC
- Blue Angel Ecolabel
- Environmental Management System ISO 14001:2015 certified
- Compliant with European IPPC BAT for Tanning of Hides + Skins

ENERGY + EMISSIONS

- Net zero carbon footprint for leather processing
- Production facility uses 100% renewable electricity
- Scope 1 + 2 emissions quantified
- Tannery has set net zero target for product by 2040

WATER + CHEMICALS

- Chrome-free leather
- Water usage: 16.5m3 of recycled water per tonne rawhide
- No Substances of Very High Concern (SVHC) are used; Elmotreasure is free of PFCs, flame retardants, phthalates + urea formaldehyde
- Tannery aligns with ZDHC + AFIRM Group chemical management objectives
- Tannery uses a biological Water Treatment Plant, utilising 100% non-potable river water in a closed-loop process that purifies the water before returning it to the source.

CIRCULARITY + LIFECYCLE

- Leather is a by-product of the food industry
- Leather is naturally durable, longlasting + reusable
- Tannery is 'Zero Waste' and creates no process waste or landfill
- All Contemporary Leathers can be accepted for takeback as part of our REVIVE® Product Stewardship Scheme

TRACEABILITY

- 100% of materials are traceable through chain of custody or physical marking
- Traceability Management System certified to ICEC TS PC 412

LAND USE + BIODIVERSITY

- All Contemporary Leathers are sourced from European locations which are free from deforestation risk
- European Union animal welfare law adheres to the requirements of the 'Five Freedoms'
- Processing by-products are used as fertilisers for local farms

SOCIAL IMPACT

- Leather Working Group conducts social audits and assesses health, safety + emergency preparedness
- Tannery certified in 'ICEC Social Responsibility' ensures social accountability and workers' rights internally + in upstream supply chain

BUILDING RATING SYSTEMS

Elmotreasure will contribute the following points for Green Star, LEED + WELL building standards:

Criteria	Green Star	LEED	WELL
Low VOC	✓	✓	✓
Product Stewardship Program	✓	✓	NA
Manufacturer EMS	✓	NA	NA
Toxic Material Reduction	NA	NA	✓

GREEN STAR

- Environmental Management System (6.1)
- Indoor Pollutants/Low VOC (12)
- Product Stewardship Program (21.1 E)
- Elmotreasure can be used on white furniture certified to Ecospecifier, AFRDI, ECNZ and GECA
- The Green Star Rating Tool states "Where at least 90% of an item's mass is certified to a GBCA recognised standard, the item can be entered as a certified product at Level A, B or C." Therefore any leather can be used as leathers are almost always under 10% by weight of a furniture item.

LEED

- Low Emitting Materials / Low VOC (EQ credit)
- Extended Producer Responsibility (MR credit)

WELL

- Air Quality/VOC Restrictions (A01 + X06)
- Materials Optimisation (X08)

