

PAINTBOX

A durable and versatile
high performance vinyl
for indoor + outdoor
applications

INSTYLE

PAINTBOX



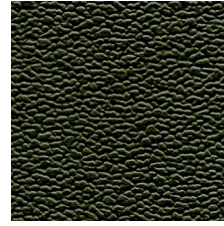
Silver



Ash



Smoke



Slate



Charcoal



Sapling



Olive



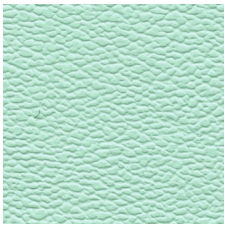
Pine



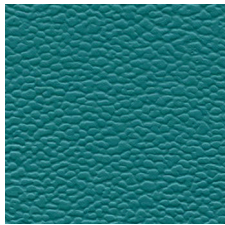
Moss



Clover



Mint



Spray



Ocean



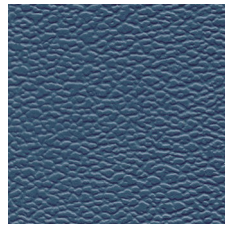
Cobalt



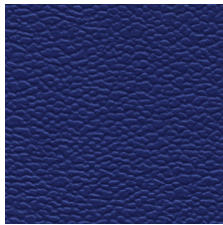
Ink



Sky



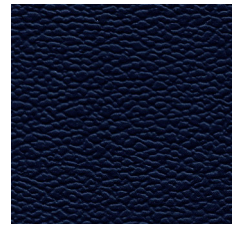
Airforce



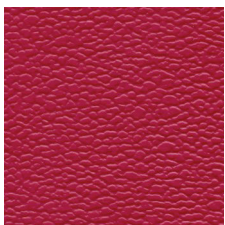
Ultramarine



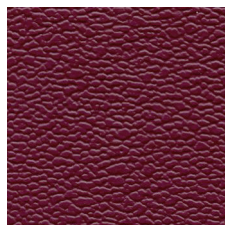
French Blue



Prussian



Raspberry



Berry



Heather



Aubergine



Black

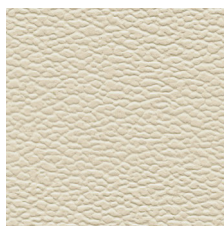
PAINTBOX



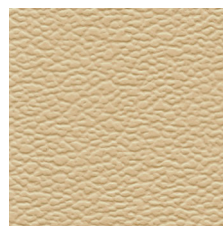
White



Antique



Buff



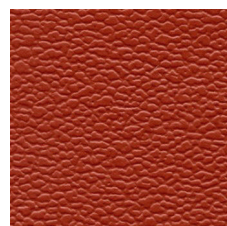
Flax



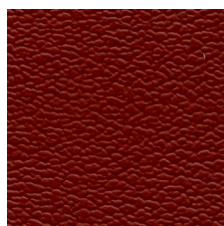
Dune



Terracotta



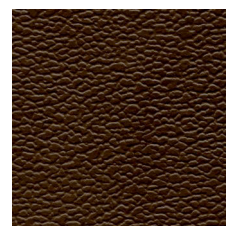
Rust



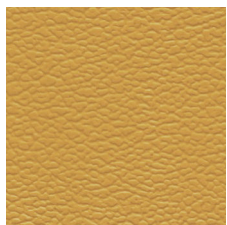
Wine



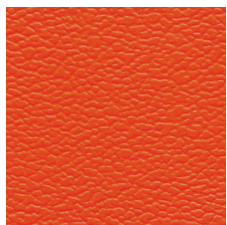
Sepia



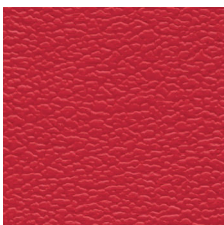
Earth



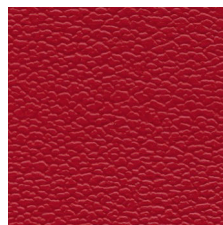
Mustard



Tangerine



Crimson



Cadmium



Kelp



Umber

Product may vary in colour due to the nature of the media
Please refer to website for current colour range



COMPOSITION	87% PVC, 13% polyester + Resilience	
WIDTH / ROLL SIZE	137cm / 27.4m approx.	
WEIGHT	678gsm	
PATTERN REPEAT	nil	
CARE CODE	V5	
ABRASION		
Martindale AS2001.2.25	>50,000	
Wyzenbeek ASTM 4157	>150,000	
LIGHTFASTNESS	>6	
ISO 105-B02		
TEARING FORCE	Length 78.7N Width 66.2N	
AS2001.2.10		
UV RESISTANCE	500 hours	
ASTM G26-96 Method C		
ADDITIONAL RESULTS	Blocking Resistance AS4878.11 Resistance to Flex Cracking AS4878.9 Rubfastness ISO 105-X12 Breaking Force AS2001.2.3.2 Elongation + Stretch Set AS1441.9 Loss of Plasticiser AS1441.8	
FIRE RATINGS		
AS/NZS 1530.3	Ignitability	16
	Spread of Flame	0
	Heat Evolved	1
	Smoke Developed	5
Additional Fire Tests	California Bulletin 117 E FMVSS NFPA 260	
APPLICATION	Indoor + outdoor upholstery, banquette seating, bedheads, screens for healthcare, hospitality, office, public building, education, automotive + residential	

PERFORMANCE

- **Permanent Stain Protection:** The Resilience finish guards against most stains. Most stains can simply be wiped away using mild soap and water
- **Antimicrobial Protection:** Engineered to inhibit fungus, mould and mildew spores, resulting in a more hygienic environment. PAINTBOX has been tested to ASTM G21 Resistance of Synthetic Polymeric Materials to Fungi.
- **Waterproof + Water Resistant**
- **Easy to Clean + Bleach Cleanable:** Easily cleaned with mild soap and water. Can be easily disinfected using one part bleach and ten parts water
- **Superior Lightfastness:** Achieves 500 hours light fastness

PLEASE NOTE

- Results from performance tests are guidelines only
- Outdoor furniture should be protected from the elements when not in use
- Protect cushions from rain
- Position wet cushion inners to allow efficient drainage, covers + inners should be air-dried completely before use
- Cover + store outdoor furniture when not in use to prevent damage from excessive UV exposure, inclement weather, debris + leaves
- Wipe down vinyl surface regularly to prevent buildup of excess dirt / soiling, sunscreen, salt, chlorine or other chemicals that can all lead to deterioration
- Please refer to cleaning instructions for regular care + maintenance

PAINTBOX - ADF Vinyl Sustainability



ENVIRONMENT

- Free of phthalates, flame retardant + anti-bacterial additives (ADF); lead, BPA, TRIS + formaldehyde
- Does not contain conflict minerals
- Reduced energy and water use, recycling of waste + solution-dyed product
- Meets the environmental, health and safety standards set by California Prop 65, CPSIA + REACH

GREEN STAR

- PAINTBOX can be used on white furniture certified to Ecospecifier, AFRDI, ECNZ and GECA
- The Green Star Rating Tool states “Where at least 90% of an item’s mass is certified to a GBCA recognised standard, the item can be entered as a certified product at Level A, B or C.” Therefore any fabric can be used as fabrics are almost always under 10% by weight of a furniture item

WELL

- PAINTBOX can contribute to WELL Toxic Material Reduction criterion as it is free of PFCs, flame retardants, phthalates and urea formaldehyde