

Ecooustic® SC Panel

—
An acoustic panel with a solid colour (SC) profile ideal for exposed edge applications



Solid Colour 12mm



Snowdrop



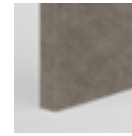
Ecrú



Almond



Horizon



Fawn



Truffle



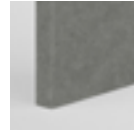
Oxide



Cool



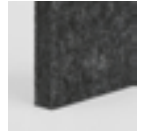
Atom



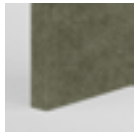
Cirrus



Tungsten



Galaxy



Olive



Isle



Azure



Denim



Cave

* indent product

Solid Colour 24mm



Pure



Stone



Ash



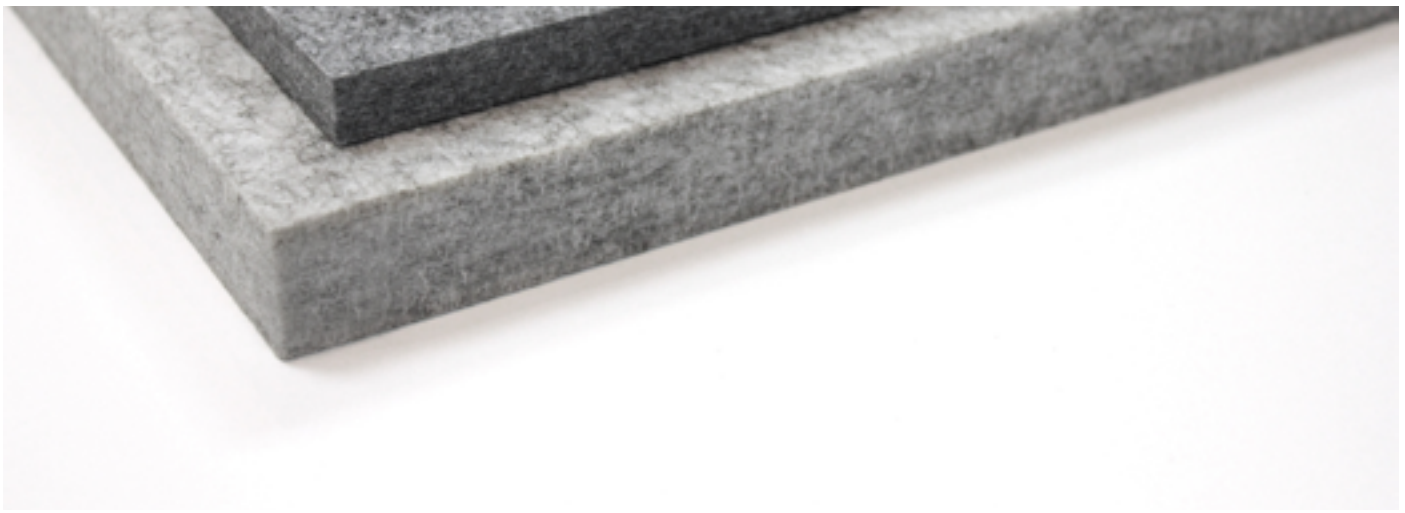
Graphite



Nero

Custom colours are available, minimums apply

Product may vary in colour due to the nature of the media
Please refer to website for current colour range



PRODUCT	Ecoustic® Solid Colour Panel (SC)	
COMPOSITION	100% PET	
THICKNESS	12mm (+/-1mm approx.) 24mm (+/-2mm approx.)	
WEIGHT	12mm: 2400gsm	
DIMENSIONS	12mm: 1220 x 2800mm approx. 24mm: 1210 x 2720mm approx.	
LIGHTFASTNESS ISO 105-B02	>7	
FIRE RATINGS	12mm	24mm
AS/NZS 1530.3		
Ignitability	8	8
Spread of Flame	0	0
Heat Evolved	1	1
Smoke Developed	5	5
AS/ISO 9705	BCA Group 1, SMOGRA <100 NZBC Group 1-S	
ASTM E84	12mm: Class A	
ACOUSTIC	Refer to results on following page	
APPLICATION	Workstation, partition, wall panel, ceiling	
PLEASE NOTE	Onsite trimming to square each panel is essential. Variation in thickness, fibre mix, colour as well as flecks + surface blemishes are an inherent + unavoidable feature. Variations from panel to panel can occur, panel joints may be obvious upon installation creating a panelling effect. Installation may require onsite adjustment by the contractor to achieve a professional finish + minimal variation Results from performance tests are guidelines only Interior products must be protected from direct heat + sunlight	

BENEFITS

Lightweight, Easy to Handle + Install

Compared to traditional panels, Ecoustic® SC is lower in weight, easier to handle and results in reduced transportation costs. Ecoustic® SC can be trimmed and installed without the need for additional finishes, which reduces labour and material costs. Installation + Care Guidelines are available on our website.

Edging Profile

14.5mm + 25mm natural anodised aluminium edging length + T Trims in natural anodised or black powdercoat at 2750mm (+/- 5mm) are available.

Warranty

5 year conditional warranty against manufacturing defects. This applies to internal installation only, outdoor use will void any warranty.

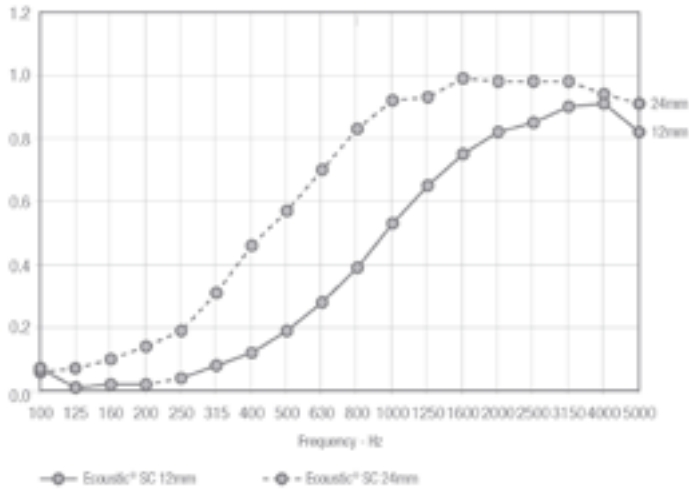
HOW TO SPECIFY

PRODUCT	Ecoustic® Solid Colour SC Panel
THICKNESS	12mm or 24mm
COLOUR	Select from applicable SC colours for nominated thickness

The sound absorption has been tested in accordance with AS/ISO 354

12mm NRC 0.4 / α_w 0.25 (Direct Fix)
 24mm NRC 0.65 / α_w 0.45 (Direct Fix)

For complete test reports please contact your local distributor



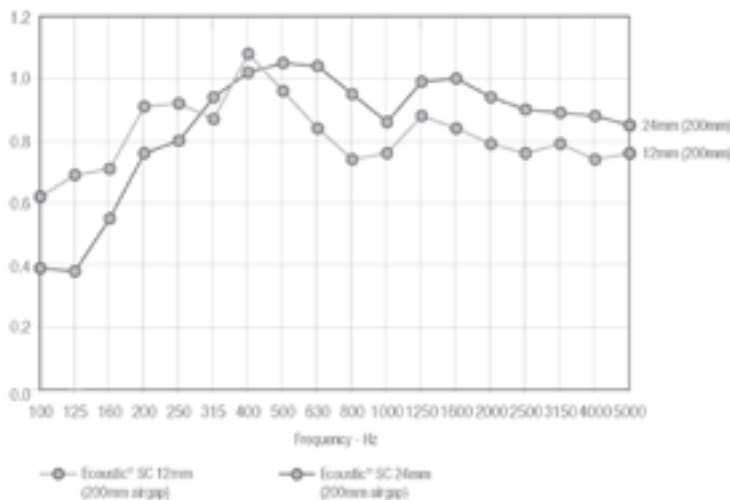
Frequency	α_S 12mm	α_S 24mm
100	0.07	0.06
125	0.01	0.07
160	0.02	0.10
200	0.02	0.14
250	0.04	0.19
315	0.08	0.31
400	0.12	0.46
500	0.19	0.57
630	0.28	0.70
800	0.39	0.83
1000	0.53	0.92
1250	0.65	0.93
1600	0.75	0.99
2000	0.82	0.98
2500	0.85	0.98
3150	0.90	0.98
4000	0.91	0.94
5000	0.82	0.91
NRC	0.4	0.65

Ecoustic® SC 24mm is ideal for medium to high frequency absorption.

The sound absorption has been tested in accordance with AS/ISO 354

12mm NRC 0.85 / α_w 0.8 (200mm air gap)
 24mm NRC 0.95 / α_w 0.95 (200mm air gap)

For complete test reports please contact your local distributor



Frequency	α_S 12mm	α_S 24mm
100	0.62	0.39
125	0.69	0.38
160	0.71	0.55
200	0.91	0.76
250	0.92	0.80
315	0.87	0.94
400	1.08	1.02
500	0.96	1.05
630	0.84	1.04
800	0.74	0.95
1000	0.76	0.86
1250	0.88	0.99
1600	0.84	1.00
2000	0.79	0.94
2500	0.76	0.90
3150	0.79	0.89
4000	0.74	0.88
5000	0.76	0.85
NRC	0.85	0.95



CERTIFICATIONS + STANDARDS

- Environmental Product Declaration (EPD)
- Declare Red List Free
- Cradle to Cradle Bronze
- Environmental Management System ISO 14001:2015
- Low VOC

ENERGY + EMISSIONS

- Embodied carbon: 6.5kg CO2eq per kg
- Production facility uses 30% renewable energy

WATER + CHEMICALS

- No water is used in production of Ecoustic® SC Panels
- Ecoustic® SC Panels do not contain any Banned List chemicals
- Third-party certifications assess chemical safety to 99% of material weight

CIRCULARITY + LIFECYCLE

- Ecoustic® SC panels are a pure Technical Nutrient in the circular economy
- 9mm + 24mm Ecoustic® SC Panels contain minimum 60% post-consumer recycled PET
- Ecoustic® SC Panels are designed for disassembly + reuse, Instyle's aluminium edging profiles allow for adhesive-free installation + easy material separation at the end of the product lifecycle
- Ecoustic® SC Panels can be accepted for takeback as part of our REVIVE® Product Stewardship Scheme

LAND USE + BIODIVERSITY

- Impacts on land and biodiversity such as resource use, output flows + waste, acidification + eutrophication are quantified in the product's Lifecycle Assessment (LCA) available in the EPD

SOCIAL IMPACT

- OHS Management System ISO 45001
- Supplier has an established human rights policy + audit management process
- Supply chain Code of Conduct in place
- Cradle-to-Cradle certification requires a risk assessment be completed to address potential health, safety + human rights risks

BUILDING RATING SYSTEMS

Ecoustic® SC Panels will contribute the following points for Green Star, LEED + WELL building standards:

Criteria	Green Star	LEED	WELL
Low VOC	√	√	√
Recycling Program	√	√	NA
EPD	√	√	NA
Cradle to Cradle Bronze Certification	-	√	√
Declare Label	√	√	√
Manufacturer EMS	√	NA	NA
Toxic Material Reduction	NA	NA	√

GREEN STAR

- Indoor Pollutants/Low VOC (12)
- Recycled Content Product (21.1 B)
- Environmental Product Declarations (21.1 C)
- Third Party Certification (21.1 D)
- Product Stewardship Program (21.1 E)

LEED

- Low Emitting Materials / Low VOC (EQ credit)
- Environmental Product Declarations (MR credit)
- Material Ingredient Reporting (MR credit)
- Extended Producer Responsibility (MR credit)

WELL

- Enhanced Material Restrictions (X05)
- Air Quality/VOC Restrictions (A01 + X06)
- Materials Transparency (X07)
- Materials Optimisation (X08)
- Sound Reducing Surfaces (S05)

