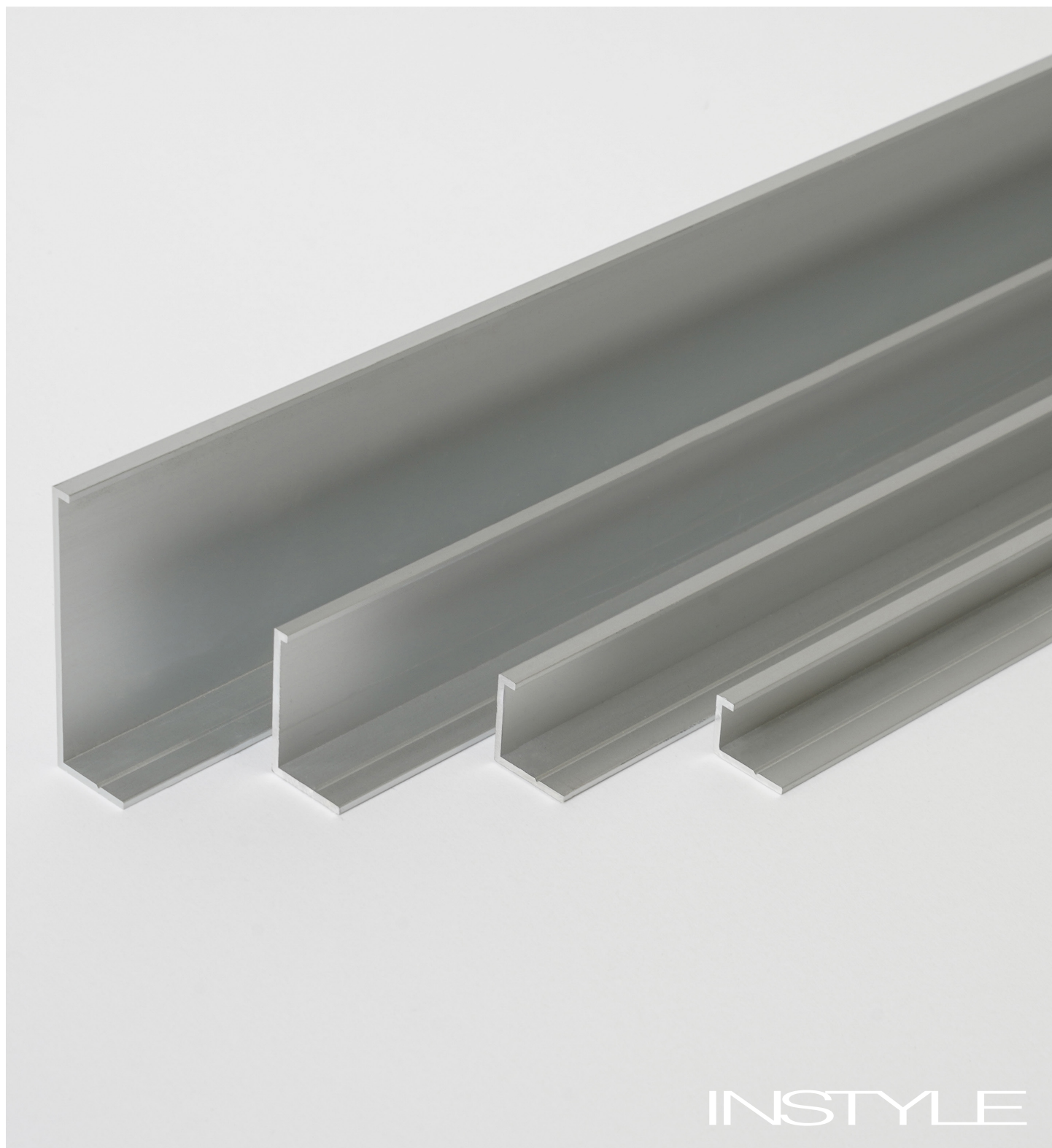
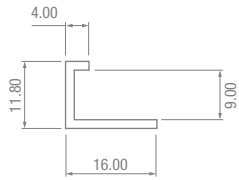


Ecooustic® Edging

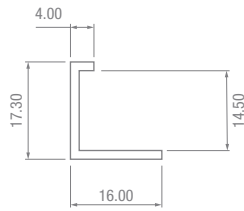
—
A slim profile, lightweight Ecooustic® Edging ideal for installing with Ecooustic® Felt, SC + Velour Panels



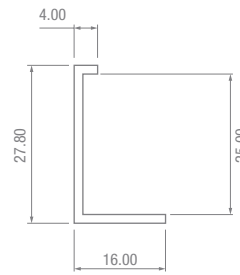
INSTYLE



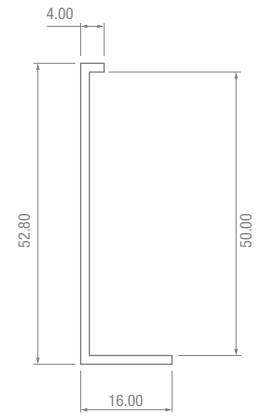
9mm edging
8mm panel



14.5mm edging
13.5mm panel



25mm edging
25mm panel



50mm edging
50mm panel

Ecoustic® Panels can be fixed to walls using our Ecoustic® Edging. With its slim profile, Ecoustic® Edging is ideal to use to install Ecoustic® panels as they create lightweight, easily assembled systems that reduce the use of non-recyclable glues and tapes.

9mm*, 14.5mm*, 25mm + 50mm natural anodised aluminium edging profiles are available for each Ecoustic® Panel thickness.



Edging profile installed back-to-back with Ecoustic® Panel Charcoal

COMPOSITION	Aluminium
THICKNESS	1.4mm approx.
WEIGHT	9mm: 0.102kg/m 14.5mm: 0.131kg/m 25mm: 0.167kg/m 50mm: 0.266kg/m
LENGTH	2750mm (+/-5mm)
FINISH	Natural anodised aluminium
PLEASE NOTE	*The edging profiles for 8mm + 13.5mm Ecoustic® Panel are 1mm larger to allow for 1mm tolerance in panel thickness

HOW TO SPECIFY	
DESIGN	Ecoustic® Edging
THICKNESS	9mm, 14.5mm, 25mm, 50mm
FINISH	Natural anodised (all thicknesses) Black (25mm thickness)

INSTALLATION + CARE GUIDELINES

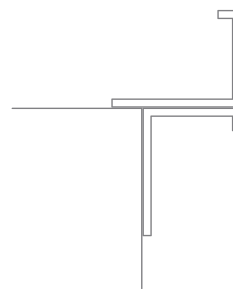
Installation + Care Guidelines are available on our website.

The edging profiles can be used at each end or back-to-back, either butted firmly against each other or with a space between to create a shadow-line detail as per the diagrams below.



For external corners, the edging profile can be overhung from the wall corner edge as per the diagram below.

NB. Depending on the edging profile size, the overhanging edging profile must be adhered by glue or heavy duty double sided tape as it can not be fixed by drilling.



For internal corners, the edging profile can be affixed by measuring the outside dimension of the relevant edging profile from the corner as per the diagram below.

