



# BIJOU

—  
An elegant, milled aniline leather with a matt finish + ultra-soft handle that enhances with age

INSTYLE

# BIJOU

## CONTEMPORARY LEATHERS



Bijou Loir



Bijou Isar



Bijou Harlem



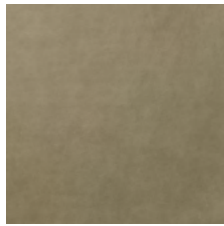
Bijou Marais



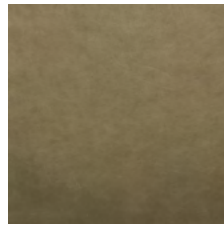
Bijou Arno



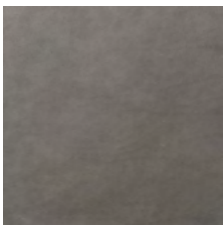
Bijou Zinco



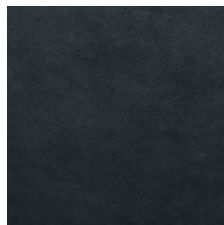
Bijou Neva



Bijou Paru



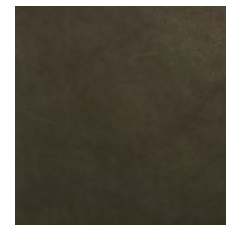
Bijou Finn



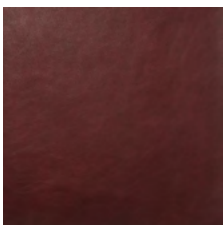
Bijou Danube



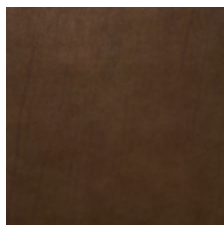
Bijou Nile



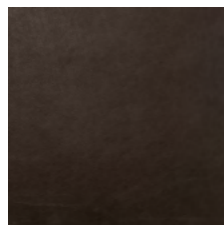
Bijou Congo



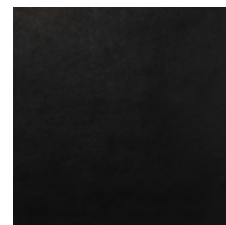
Bijou Tiber



Bijou Verdon

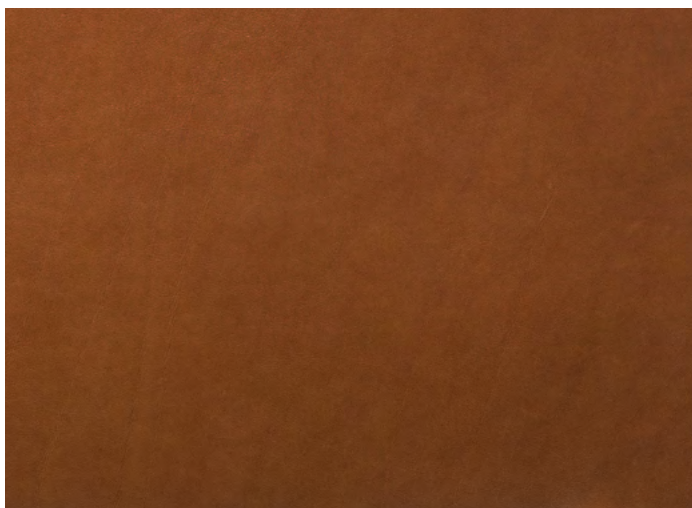



Bijou Yukon



Bijou Volta

Leather may vary in colour due to the nature of the media  
Please refer to website for current colour range



AVERAGE HIDE SIZE	6 sqm approx.	
THICKNESS	1 - 1.2mm	
WEIGHT	735gsm approx.	
LEATHER TYPE	Pure Aniline 	
COLOURFASTNESS TO-AND-FRO RUBBING EN ISO 11640 + 11641	Dry 5 Wet 4-5 Perspiration 5	
LIGHTFASTNESS EN ISO 105-B02	3	
pH AND ΔpH EN ISO 4045	pH 3.8 ΔpH 0.41	
TEAR STRENGTH EN ISO 3377-1	32 N	
FIRE RATINGS AS/NZS 1530.3	Ignitability	14
	Spread of Flame	0
	Heat Evolved	1
	Smoke Developed	3
AS/NZS 3837	BCA Group 1 Av. Specific Extinction Area 129 m2/kg	
IMO Resolution A.652(16)	Sections 8.2 + 8.3: Pass	
APPLICATION	Upholstery seating, wall panels + curtains for commercial, residential + hospitality applications	

**PLEASE NOTE**

Pure-Aniline leathers are made from the finest raw hides. The natural characteristics such as insect bites, fat wrinkles, growth marks and healed scars can still be visible, a sign of a superior natural leather with its own individuality. Pure-Aniline leathers do not have any protective coating or pigment on the surface and are therefore more susceptible to fading from sunlight exposure. Care should be taken in high-traffic areas where food and drink spillages could stain the leather.

**CARE**

Leather Care for Aniline Leathers is available from our website.

**SEATING COMFORT RATING**



A rating to determine a leather's seating comfort based upon the leather's ability to breathe and absorb moisture. Tested to ASTM E 96 M-05. Bijou achieves an Excellent Seating Comfort rating.



**CERTIFICATIONS + STANDARDS**

- Leather Working Group Gold certified
- Environmental Management System ISO 14001:2015 certified
- Low VOC
- Compliant with the European IPPC BAT for Tanning of Hides + Skins

**ENERGY + EMISSIONS**

- Production facility uses 30% renewable energy
- Meets Leather Working Group’s strict criteria for air, water + noise emissions

**WATER + CHEMICALS**

- No Substances of Very High Concern (SVHC) are used
- Leather Working Group aligns with ZDHC + AFIRM Group chemical management objectives
- Finishing is carried out using exclusively water-based conditioning systems
- 100% non-potable water used + water reduction measures in place

**CIRCULARITY + LIFECYCLE**

- Leather is a by-product of the food industry
- Leather is naturally durable, longlasting + reusable
- All Contemporary Leathers can be accepted for takeback as part of our REVIVE® Product Stewardship Scheme

**TRACEABILITY**

- 90% of materials are traceable through chain of custody or physical marking

**LAND USE + BIODIVERSITY**

- All Contemporary Leathers are sourced from European locations which are free from deforestation risk
- European Union animal welfare law adheres to the requirements of the ‘Five Freedoms’

**SOCIAL IMPACT**

- Leather Working Group conducts social audits and assesses health, safety + emergency preparedness

**GREEN STAR**

- BIJOU can contribute low VOC points
- BIJOU can contribute ISO 14001 points
- BIJOU can be used on white furniture certified to Ecospecifier, AFRDI, ECNZ and GECA
- The Green Star Rating Tool states “Where at least 90% of an item’s mass is certified to a GBCA recognised standard, the item can be entered as a certified product at Level A, B or C.” Therefore any leather can be used as leathers are almost always under 10% by weight of a furniture item.

**LEED**

- BIJOU can contribute low VOC points
- BIJOU can contribute Extended Producer Responsibility points through Instyle’s REVIVE® Product Stewardship Scheme

**WELL**

- BIJOU can contribute Low VOC / VOC Reduction
- Toxic Material Reduction: BIJOU is free of PFCs, flame retardants, phthalates + urea formaldehyde

