



# SOURCE

---

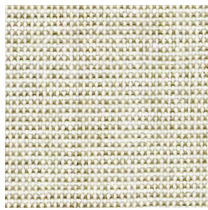
A versatile classic fabric,  
ideal for acoustic drapery  
to reduce unwanted  
reverberation + soften  
sound within a space

INSTYLE

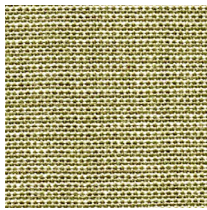
# SOURCE



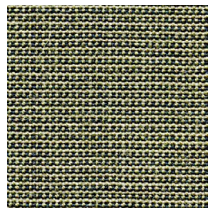
SOURCE Comfort



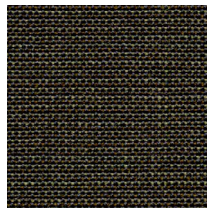
SOURCE Natural



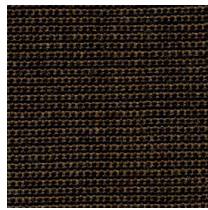
SOURCE Air



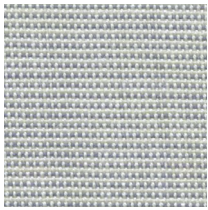
SOURCE Pure



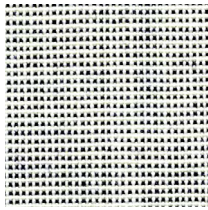
SOURCE Create



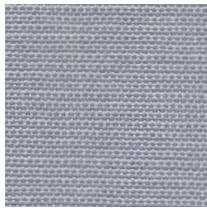
SOURCE Nourish



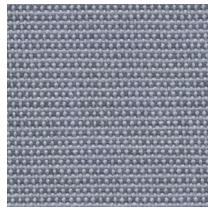
SOURCE Local



SOURCE Pride



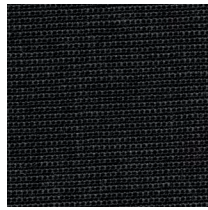
SOURCE Truth



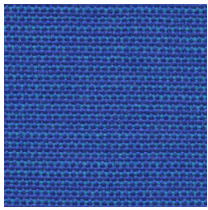
SOURCE Unit



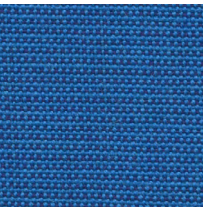
SOURCE Hidden



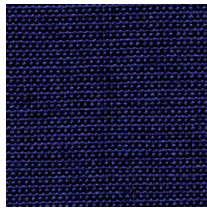
SOURCE Origin



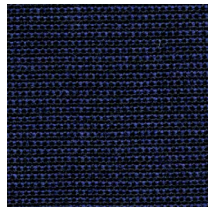
SOURCE Global



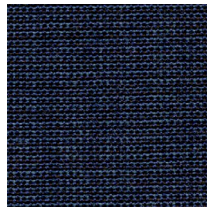
SOURCE Sanctuary



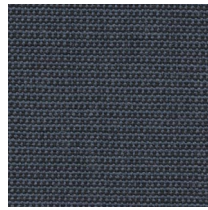
SOURCE Water



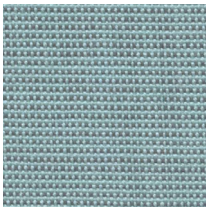
SOURCE Rain



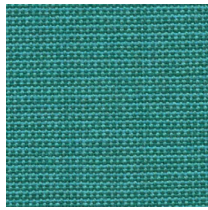
SOURCE Well



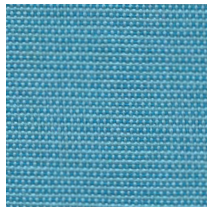
SOURCE Details



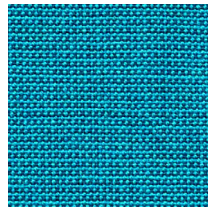
SOURCE Haven



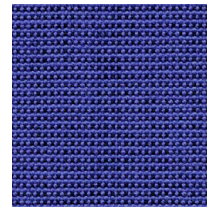
SOURCE Brilliance



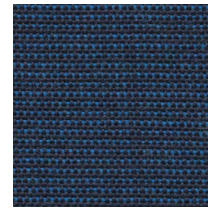
SOURCE Relaxation



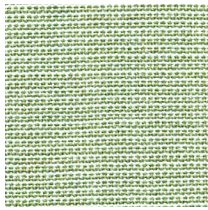
SOURCE Wonder



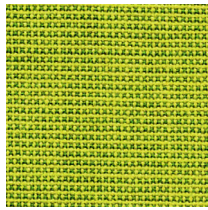
SOURCE Strength



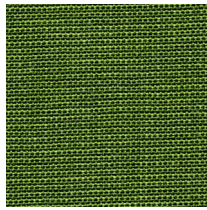
SOURCE Fulfilment



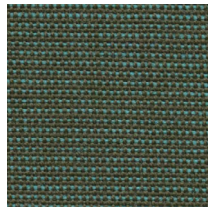
SOURCE Spring



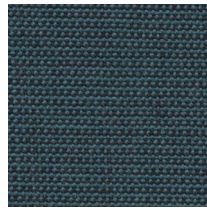
SOURCE Erer



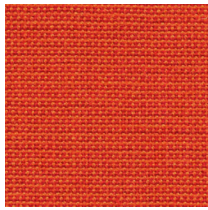
SOURCE Joy



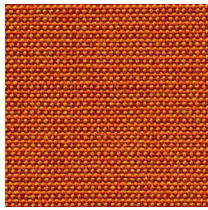
SOURCE Essence



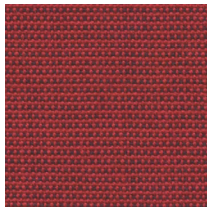
SOURCE Knowledge



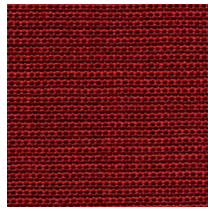
SOURCE Amusement



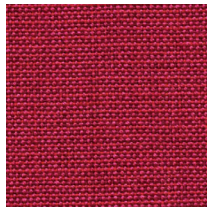
SOURCE Vitality



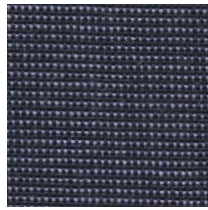
SOURCE Major



SOURCE Tomato

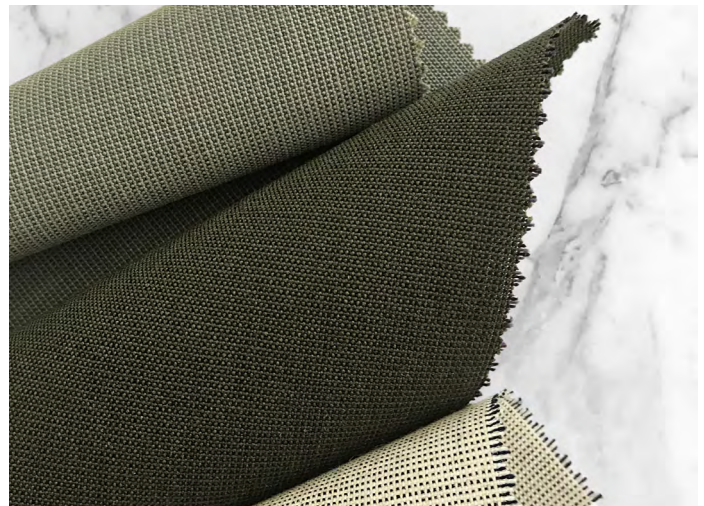
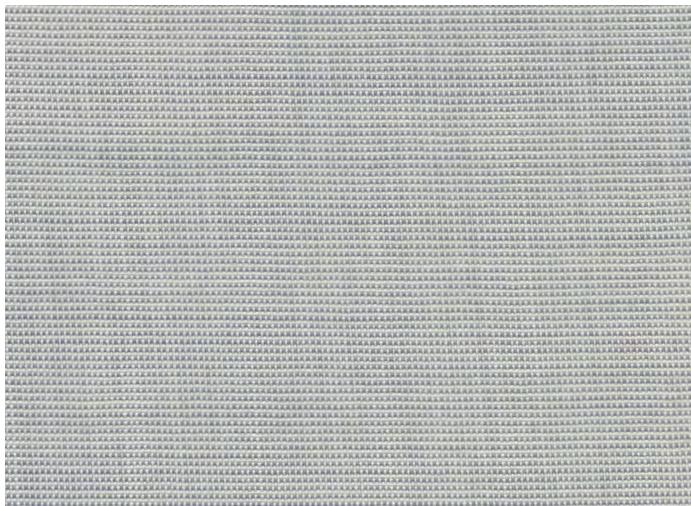



SOURCE Cee



SOURCE Beauty

Product may vary in colour due to the nature of the media  
Please refer to product page on website for current colour range



COMPOSITION	100% Australian worsted EthEco® wool	
WIDTH / WEIGHT	188cm / 320gsm	
PATTERN REPEAT	nil	
ROLL SIZE	50m approx.	
CARE CODE	Wool Curtain Care	
CTA RATING	 <b>COMMERCIAL SCREEN FABRICS</b>	
SEAM SLIPPAGE AS2001.2.22		Warp 3.5mm Weft 5.7mm Note: All seams must be overlapped or secured to prevent the premature failure of the seam due to fraying
LIGHTFASTNESS	5	
FIRE RATINGS AS/NZS 1530.3	Ignitability	10
	Spread of Flame	0
	Heat Evolved	0
	Smoke Developed	4
AS/NZS 3837	BCA Group 1 Av. Specific Extinction Area 75.5m2/kg	
ISO 5660.1	NZBC Group 1-S Av. Specific Extinction Area 89.6m2/kg	
Additional Fire Tests	California 117E, ASTM E84	
Important	Please check your project requirements as the BCA flammability requirements for curtaining vary from state to state	
ACOUSTIC AS/ISO 354	NRC 0.55 Acoustic drapery reduces unwanted reverberation whilst softening sound	
APPLICATION	Acoustic drapery*, upholstery seating, screens, wall panels	
IMPORTANT	*Acoustic drapery must be lined if used on an external window	
ORIGIN	Made in Australia	
PLEASE NOTE	Results from performance tests are guidelines only	

**ENVIRONMENT**

- 100% sustainable, rapidly renewable content: EthEco® wool is sourced from non-mulesed sheep cared for on holistically-managed farms
- Environmentally Improved Production Process: Manufactured to strict environmental criteria, reduced water and energy use, reuse of water (30%), recycling of waste, no hazardous substances
- Wool absorbs indoor air contaminants, benefiting indoor air quality
- SOURCE is certified as low-VOC
- 100% biodegradable and recyclable

**GREEN STAR**

- SOURCE can contribute points to the following Green Star criteria:
- Stewardship Programs: SOURCE can be reused or recycled through our Revive recycling program
  - Low-VOC
  - SOURCE can be used on white furniture certified to Ecospecifier, AFRDI, ECNZ and GECA
  - The Green Star Rating Tool states “Where at least 90% of an item’s mass is certified to a GBCA recognised standard, the item can be entered as a certified product at Level A, B or C.” Therefore any fabric can be used as fabrics are almost always under 10% by weight of a furniture item

**LEED**

- SOURCE can contribute points to the following LEED criteria:
- Bio-Based + Rapidly-Renewable Content (100%)
  - Low-VOC
  - Extended Producer Responsibility Recycling Program

**WELL**

- SOURCE can contribute to the following WELL criteria:
- Low VOC / VOC Reduction: SOURCE is low VOC
  - Toxic Material Reduction: SOURCE is free of PFCs, flame retardants, phthalates and urea formaldehyde