

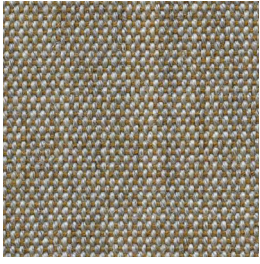


NATIVE

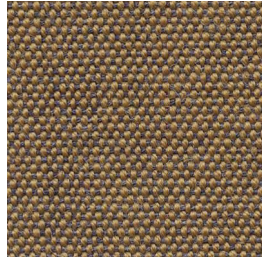
A classic sustainable fabric,
ideal for acoustic drapery
to reduce unwanted
reverberation + soften
sound within a space

INSTYLE

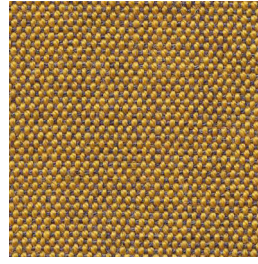
NATIVE



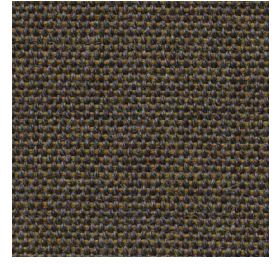
NATIVE Paperbark



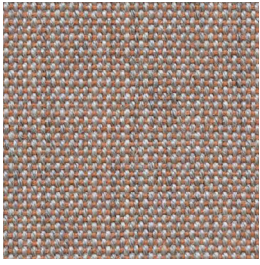
NATIVE Dialect



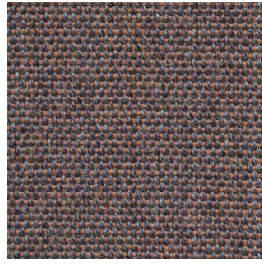
NATIVE Wattleseed



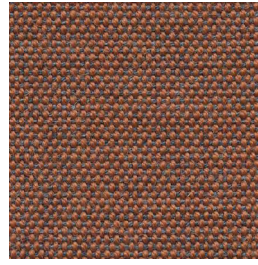
NATIVE Imagery



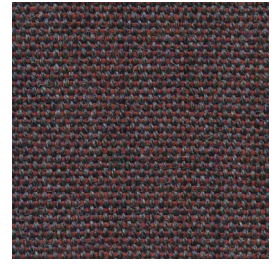
NATIVE Guide



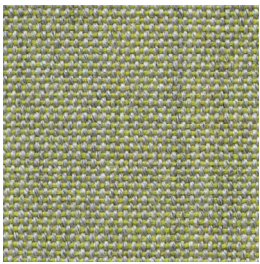
NATIVE Banksia



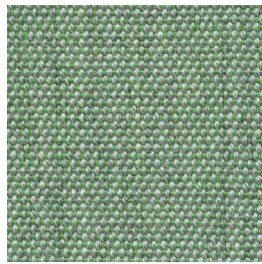
NATIVE Red Ochre



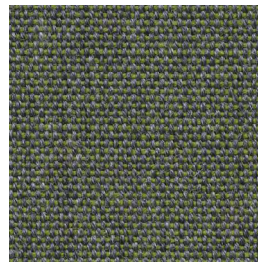
NATIVE Art



NATIVE Olivine



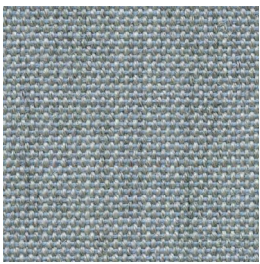
NATIVE Tea Tree



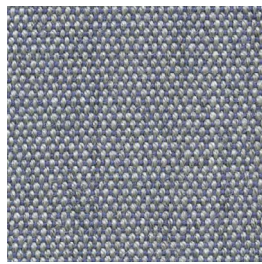
NATIVE Eucalypt



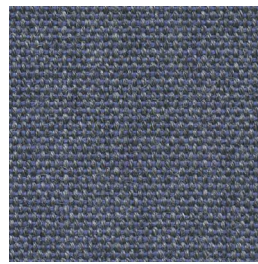
NATIVE Flora



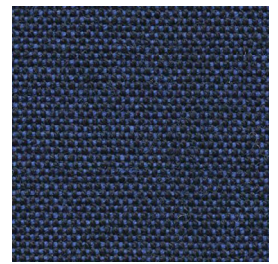
NATIVE Blue Gum



NATIVE Habitat



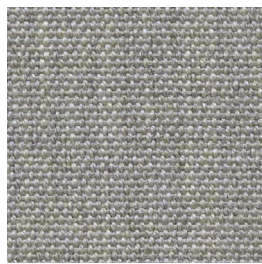
NATIVE Coastline



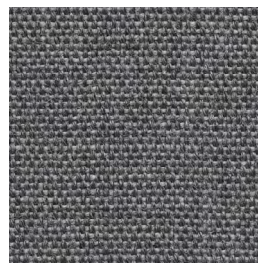
NATIVE Language



NATIVE Saltbush



NATIVE Silver Ash

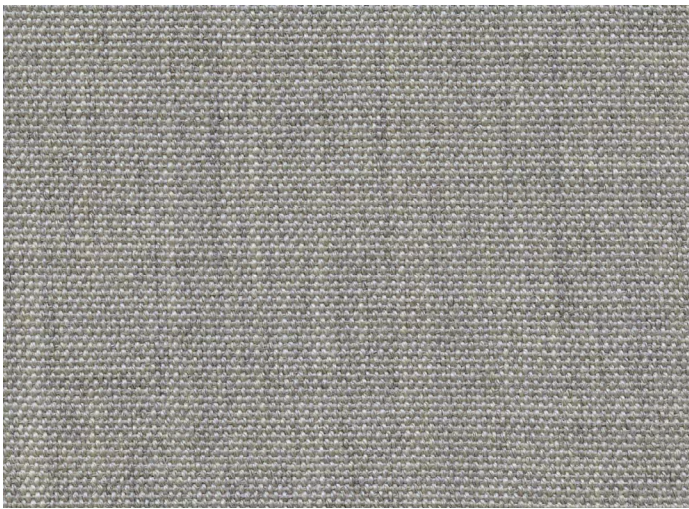



NATIVE Ironbark



NATIVE Mallow

Product may vary in colour due to the nature of the media
Please refer to website for current colour range



COMPOSITION	>90% Australian eco wool, <10% nylon	
WIDTH / WEIGHT	137cm / 390gsm	
PATTERN REPEAT	Nil	
ROLL SIZE	50m approx.	
CARE CODE	Wool Curtain Care	
CTA RATING	 COMMERCIAL SCREEN FABRICS	
SEAM SLIPPAGE AS2001.2.22		Warp 7mm Weft 4mm Note: All seams must be overlapped or secured to prevent the premature failure of the seam due to fraying
LIGHTFASTNESS	> 5	
FIRE RATINGS AS/NZS 1530.3	Ignitability	0
	Spread of Flame	0
	Heat Evolved	0
	Smoke Developed	3
AS/NZS 3837 (AS 5637.1)	BCA Group 2 Av. Specific Extinction Area 81.4m2/kg	
ISO 5660.1	NZBC Group 2s in accordance with C/VM2 Appendix A	
IMO 2010 FTP Part 8	Sections 4.2 + 4.3: Pass	
Important	Please check your project requirements as the BCA flammability requirements for curtaining vary from state to state	
ACOUSTIC AS/ISO 354	NRC 0.65 Acoustic drapery helps reduce unwanted reverberation whilst softening sound within a space	
APPLICATION	Acoustic drapery*, upholstery seating, screens, wall panels	
IMPORTANT	*Acoustic drapery must be lined if used on an external window	
ORIGIN	Made in Australia	
PLEASE NOTE	Results from performance tests are guidelines only	

ENVIRONMENT

- Made from at least 90% Australian low pesticide EU-Ecolabel certified eco wool
- Manufactured in Australia to strict environmental criteria, reduced water and energy use, reuse of water (30%), recycling of waste, no hazardous substances
- Wool absorbs indoor air contaminants, benefiting indoor air quality
- NATIVE is certified as low-VOC
- 100% biodegradable + recyclable
- Giving Back: \$1/m sold is donated to The Nature Conservancy

GREEN STAR

NATIVE can contribute points to the following Green Star criteria:

- Stewardship Programs: NATIVE can be reused or recycled through our Revive recycling program
- Low-VOC
- NATIVE can be used on white furniture certified to Ecospecifier, AFRDI, ECNZ and GECA
- The Green Star Rating Tool states “Where at least 90% of an item’s mass is certified to a GBCA recognised standard, the item can be entered as a certified product at Level A, B or C.” Therefore any fabric can be used as fabrics are almost always under 10% by weight of a furniture item

LEED

NATIVE can contribute points to the following LEED criteria:

- Bio-Based + Rapidly-Renewable Content (90%)
- Low-VOC
- Extended Producer Responsibility Recycling Program

WELL

NATIVE can contribute to the following WELL criteria:

- Low VOC / VOC Reduction: NATIVE is low VOC
- Toxic Material Reduction: NATIVE is free of PFCs, flame retardants, phthalates and urea formaldehyde