

MIX

A beautiful soft marle fabric, ideal for acoustic drapery to reduce noise reverberation + soften sound within a space

INSTYLE

MIX



MIX Ivory



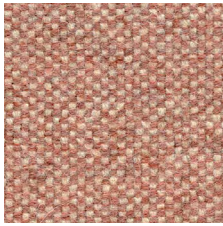
MIX Nude



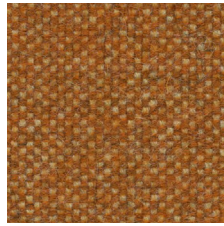
MIX Harvest



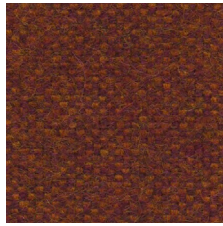
MIX Taupe



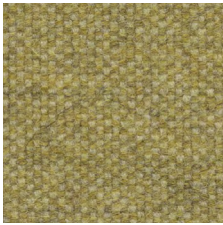
MIX Kindred



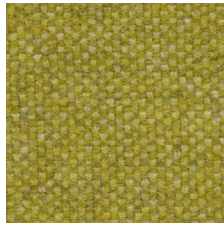
MIX Mandarin



MIX Fig



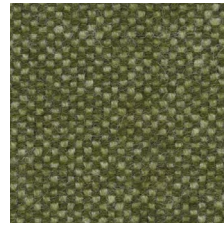
MIX Juice



MIX Citrine



MIX Sage



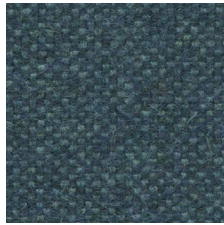
MIX Olive



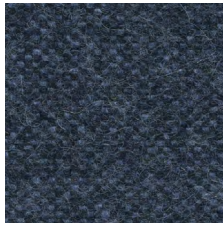
MIX Acorn



MIX Glacier



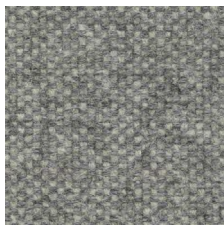
MIX Reef



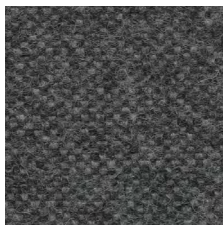
MIX Blueberry



MIX Vapour



MIX Xenon



MIX Quartz



MIX Lava

Product may vary in colour due to the nature of the media
Please refer to website for current colour range



COMPOSITION	65% Australian wool, 20% nylon, 15% alpaca
WIDTH / WEIGHT	137cm / 525gsm
PATTERN REPEAT	nil
ROLL SIZE	50m approx.
CARE CODE	Wool Curtain Care
CTA RATING	sf COMMERCIAL SCREEN FABRICS
SEAM SLIPPAGE AS2001.2.22	Warp 6.5mm Weft 5mm Note: All seams must be overlocked or secured to prevent the premature failure of the seam due to fraying
LIGHTFASTNESS	>6
FIRE RATINGS AS/NZS 1530.3	Ignitability 11 Spread of Flame 0 Heat Evolved 0 Smoke Developed 4
AS/NZS 3837	BCA Group 2 Av. Specific Extinction Area 67.5 m ² /kg
ISO 5660.1	NZBC Group 2S Av. Specific Extinction Area 64.3m ² /kg
IMO 2010 FTP CODE PT 8 Important	Cigarette + Flame: Pass Please check your project requirements as the BCA flammability requirements for curtaining vary from state to state
ACOUSTIC AS/ISO 354	NRC 0.8 Acoustic drapery helps reduce unwanted reverberation whilst softening sound within a space
APPLICATION	Acoustic drapery*, upholstery seating, screens, wall panels
IMPORTANT	*Acoustic drapery must be lined if used on an external window
PLEASE NOTE	Results from performance tests are guidelines only

ENVIRONMENT

- 80% sustainable, rapidly renewable content
- Reduced water and energy consumption, recycling of waste
- MIX is certified low VOC
- Wool absorbs indoor air contaminants, benefiting indoor air quality
- 80% biodegradable (natural fibre content) and recyclable

GREEN STAR

- MIX can contribute points to the following Green Star criteria:
- Stewardship Programs: MIX can be reused or recycled through our Revive recycling program
 - Low-VOC
 - MIX can be used on white furniture certified to Ecospecifier, AFRDI, ECNZ and GECA
 - The Green Star Rating Tool states “Where at least 90% of an item’s mass is certified to a GBCA recognised standard, the item can be entered as a certified product at Level A, B or C.” Therefore any fabric can be used as fabrics are almost always under 10% by weight of a furniture item

LEED

- MIX can contribute points to the following LEED criteria:
- Bio-Based + Rapidly-Renewable Content (80%)
 - Low-VOC
 - Extended Producer Responsibility Recycling Program

WELL

- MIX can contribute to the following WELL criteria:
- Low VOC / VOC Reduction: MIX is low VOC
 - Toxic Material Reduction: MIX is free of PFCs, flame retardants, phthalates and urea formaldehyde