



# FEEL

---

A wool + alpaca marle fabric, ideal for acoustic drapery to reduce unwanted reverberation + soften sound within a space

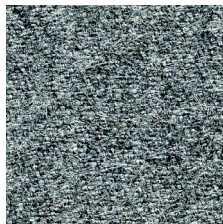
# FEEL



FEEL Young Again



FEEL Awesome



FEEL Respected



FEEL Confident



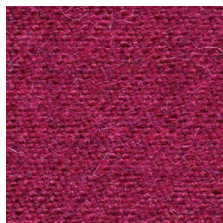
FEEL Invincible



FEEL Inspired



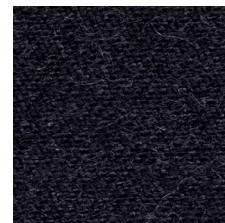
FEEL Calm



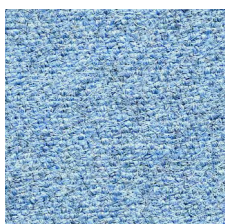
FEEL Fabulous



FEEL Amazing



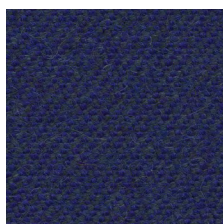
FEEL Beautiful



FEEL Wonderful



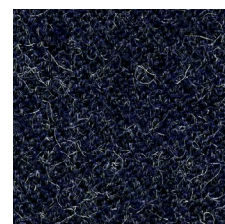
FEEL Sophisticated



FEEL Precious



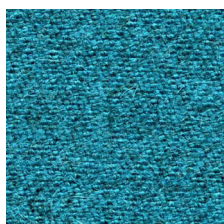
FEEL Chilled



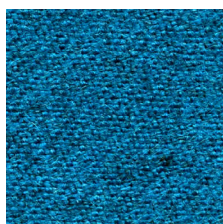
FEEL Secure



FEEL Playful



FEEL Lucky



FEEL Great



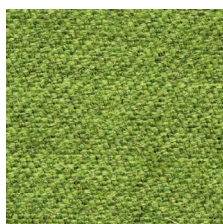
FEEL Liberated



FEEL Nostalgic



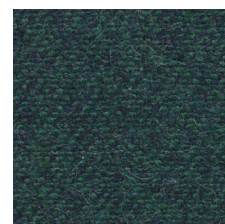
FEEL Thrilled



FEEL Free



FEEL Zen



FEEL Splendid

# FEEL



FEEL Elated



FEEL Alive



FEEL Unique



FEEL Satisfied



FEEL Positive



FEEL Peachy



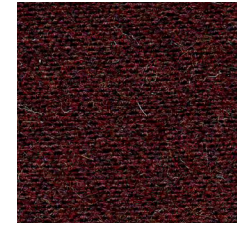
FEEL At Home



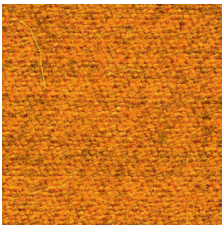
FEEL Grounded



FEEL Refined



FEEL Wanted



FEEL Optimistic



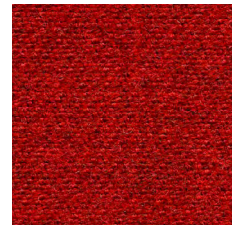
FEEL Daring



FEEL Adventurous



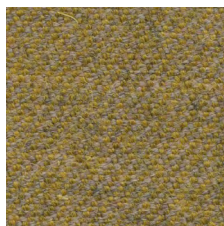
FEEL Up For It



FEEL Loved



FEEL Jubilant




FEEL Merry



FEEL Excited

Product may vary in colour due to the nature of the media  
Please refer to website for current colour range



COMPOSITION	65% Australian wool, 20% nylon, 15% alpaca
WIDTH / WEIGHT	140cm / 418gsm
PATTERN REPEAT	nil
ROLL SIZE	50m approx.
CARE CODE	Wool Curtain Care
CTA RATING	 <b>COMMERCIAL SCREEN FABRICS</b>
SEAM SLIPPAGE AS2001.2.22	Warp 3.3mm Weft 5mm Note: All seams must be overlapped or secured to prevent the premature failure of the seam due to fraying
LIGHTFASTNESS	5
FIRE RATINGS AS/NZS 1530.3	Ignitability 13 Spread of Flame 0 Heat Evolved 1 Smoke Developed 5
AS/NZS 3837	BCA Group 2 Av. Specific Extinction Area 51.7 m <sup>2</sup> /kg
ISO 5660.1	NZBC Group 2S Av. Specific Extinction Area 54.9m <sup>2</sup> /kg
IMO Resolution A.625(16)	Sections 8.2 + 8.3: Pass
Additional Fire Tests Important	California 117E, NFPA 260 UFAC Please check your project requirements as the BCA flammability requirements for curtaining vary from state to state
ACOUSTIC AS/ISO 354	NRC 0.8 - Acoustic drapery helps reduce unwanted reverberation whilst softening sound within a space
APPLICATION	Acoustic drapery, upholstery seating, screen, wall panel
IMPORTANT	Acoustic drapery must be lined if used on an external window
PLEASE NOTE	Results from performance tests are guidelines only

**ENVIRONMENT**

- 80% sustainable, rapidly renewable content
- Reduced water and energy consumption, recycling of waste
- FEEL is certified low VOC
- Wool absorbs indoor air contaminants, benefiting indoor air quality
- 80% biodegradable (natural fibre content) + recyclable

**GREEN STAR**

FEEL can contribute points to the following Green Star criteria:

- Stewardship Programs: FEEL can be reused or recycled through our Revive recycling program
- Low-VOC
- FEEL can be used on white furniture certified to Ecospecifier, AFRDI, ECNZ and GECA
- The Green Star Rating Tool states “Where at least 90% of an item’s mass is certified to a GBCA recognised standard, the item can be entered as a certified product at Level A, B or C.” Therefore any fabric can be used as fabrics are almost always under 10% by weight of a furniture item

**LEED**

FEEL can contribute points to the following LEED criteria:

- Bio-Based + Rapidly-Renewable Content (80%)
- Low-VOC
- Extended Producer Responsibility Recycling Program

**WELL**

FEEL can contribute to the following WELL criteria:

- Low VOC / VOC Reduction: FEEL is low VOC
- Toxic Material Reduction: FEEL is free of PFCs, flame retardants, phthalates and urea formaldehyde