

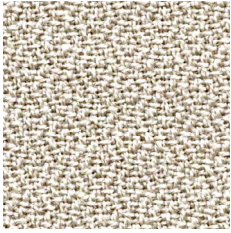


# ATLAS

—  
A timeless crepe fabric,  
ideal for acoustic drapery  
to reduce unwanted  
reverberation + soften  
sound within a space

IINSTYLE

# ATLAS



ATLAS Summit



ATLAS Husk



ATLAS Endeavour



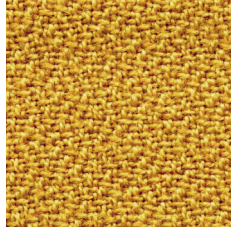
ATLAS Nougat



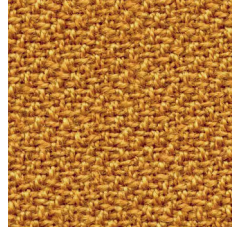
ATLAS Hound



ATLAS Dune



ATLAS Nashi



ATLAS Medal



ATLAS Mustard



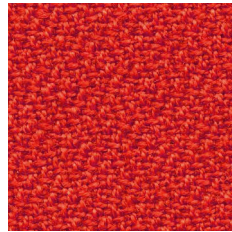
ATLAS Truffle



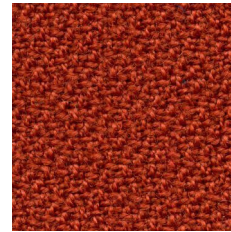
ATLAS Drifter



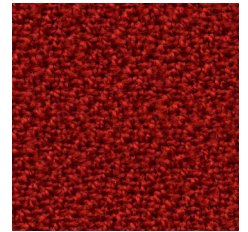
ATLAS Frontier



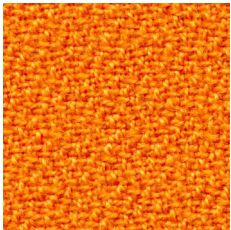
ATLAS Marmalade



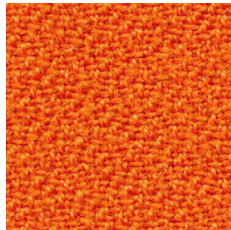
ATLAS Paprika



ATLAS Oxide



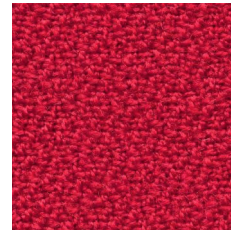
ATLAS Amber



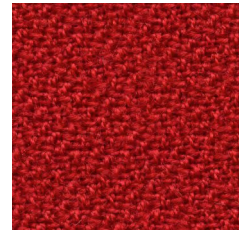
ATLAS Allure



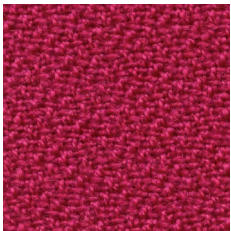
ATLAS Trailblazer



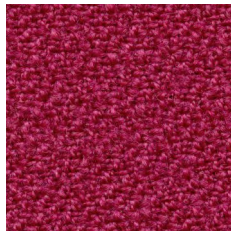
ATLAS Siren



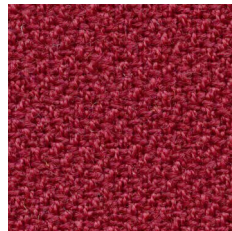
ATLAS Lantern



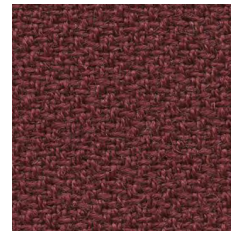
ATLAS Pucker



ATLAS Raspberry



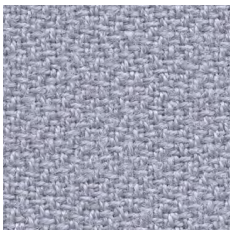
ATLAS Fez



ATLAS Globe



ATLAS Beetroot



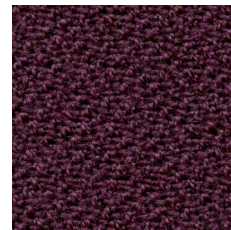
ATLAS Ash



ATLAS Heather



ATLAS Tapenade



ATLAS Velvet

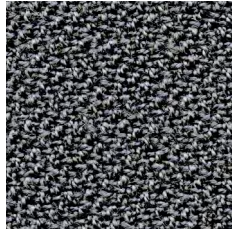


ATLAS Regent

# ATLAS



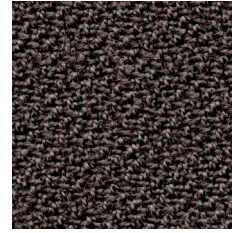
ATLAS Chart



ATLAS Fossil



ATLAS Slate



ATLAS Elk



ATLAS Grizzly



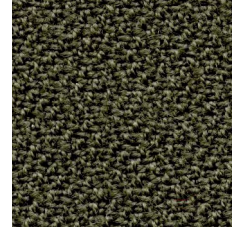
ATLAS Aloe



ATLAS Wren



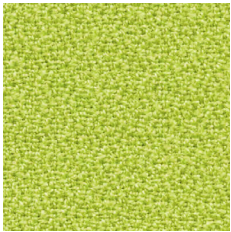
ATLAS Hessian



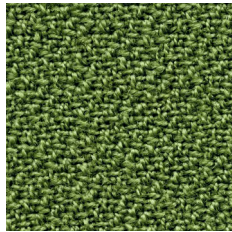
ATLAS Turf



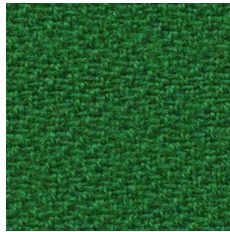
ATLAS Highland



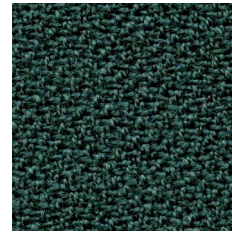
ATLAS Citrus



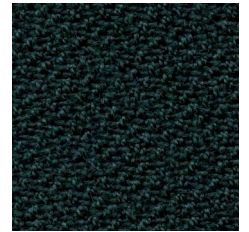
ATLAS Parrot



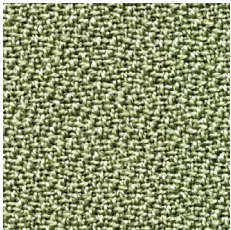
ATLAS Explorer



ATLAS Drake



ATLAS Laurel



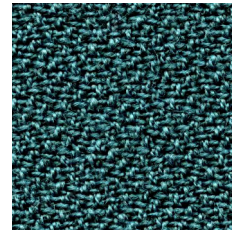
ATLAS Bud



ATLAS Settler



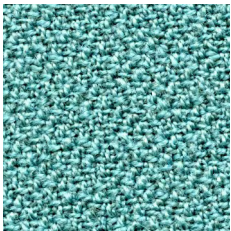
ATLAS Juniper



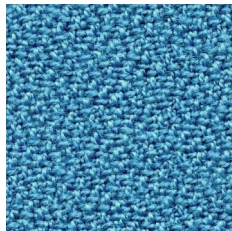
ATLAS Ship



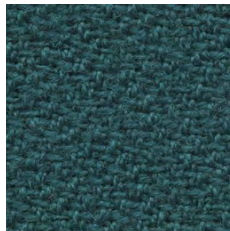
ATLAS Topaz



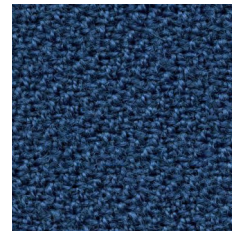
ATLAS Sound



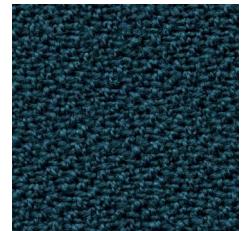
ATLAS Bounty



ATLAS Rockpool



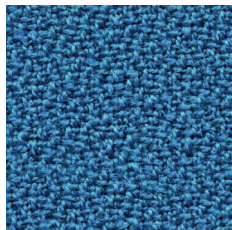
ATLAS Cadet



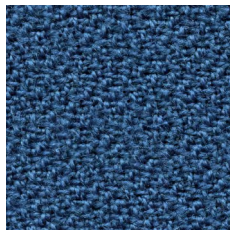
ATLAS Cove



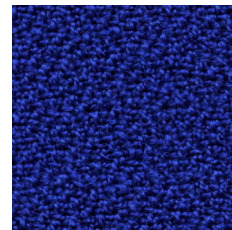
ATLAS Glacier



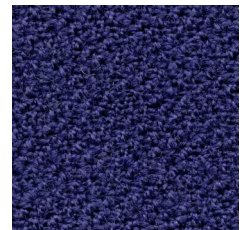
ATLAS Spinnaker



ATLAS Sapphire

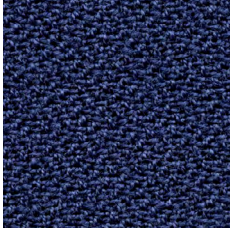


ATLAS Deep

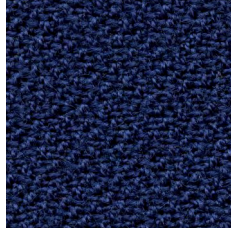


ATLAS Emperor

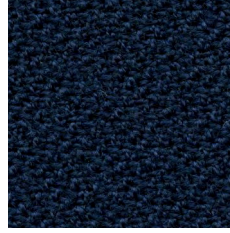
# ATLAS



ATLAS Lido



ATLAS Admiral



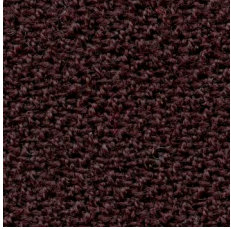
ATLAS Thunder



ATLAS Sketch



ATLAS Squid

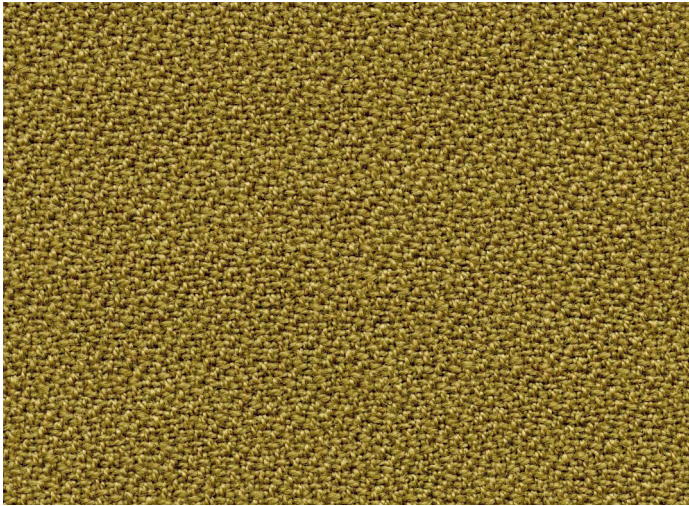



ATLAS Fig



ATLAS Pirate

Patterns shown are not to scale  
Product may vary in colour due to the nature of the media  
Please refer to website for current colour range



COMPOSITION	100% Australian worsted EthEco® wool	
WIDTH / WEIGHT	137cm / 402gsm	
PATTERN REPEAT	Nil	
ROLL SIZE	55m approx.	
CARE CODE	Wool Curtain Care	
CTA RATING		COMMERCIAL SCREEN FABRICS
SEAM SLIPPAGE AS2001.2.22	Warp 5.3mm Weft 6.5mm Note: All seams must be overlapped or secured to prevent the premature failure of the seam due to fraying	
LIGHTFASTNESS	>5	
FIRE RATINGS AS/NZS 1530.3	Ignitability	15
	Spread of Flame	0
	Heat Evolved	0
	Smoke Developed	3
AS/NZS 3837	BCA Group 1 Av. Specific Extinction Area 85.1m2/kg	
IMO Resolution A.652(16)	Sections 8.2 + 8.3 Pass	
Additional Fire Tests	California 117E, ASTM E84	
Important	Please check your project requirements as the BCA flammability requirements for curtaining vary from state to state	
ACOUSTIC AS/ISO 354	NRC 0.55 Acoustic drapery helps reduce unwanted reverberation whilst softening sound within a space	
APPLICATION	Acoustic drapery*, upholstery seating, screens, wall panels	
IMPORTANT	*Acoustic drapery must be lined if used on an external window	
ORIGIN	Made in Australia	
PLEASE NOTE	Results from performance tests are guidelines only	

**ENVIRONMENT**

- 100% sustainable, rapidly-renewable content: EthEco® wool is sourced from non-mulesed sheep cared for on holistically-managed farms
- Manufactured to strict environmental criteria, reduced water and energy use, reuse of water (30%), recycling of waste, no hazardous substances such as heavy metal dyes
- Wool absorbs indoor air contaminants, benefiting indoor air quality
- ATLAS is certified as low-VOC
- 100% biodegradable and recyclable through our Revive® program

**GREEN STAR**

- ATLAS can contribute points to the following Green Star criteria:
- Stewardship Programs: ATLAS can be reused or recycled through our Revive recycling program
  - Low-VOC
  - ATLAS can be used on white furniture certified to Ecospecifier, AFRDI, ECNZ and GECA
  - The Green Star Rating Tool states “Where at least 90% of an item’s mass is certified to a GBCA recognised standard, the item can be entered as a certified product at Level A, B or C.” Therefore any fabric can be used as fabrics are almost always under 10% by weight of a furniture item

**LEED**

- ATLAS can contribute points to the following LEED criteria:
- Bio-Based + Rapidly-Renewable Content (100%)
  - Low-VOC
  - Extended Producer Responsibility Recycling Program

**WELL**

- ATLAS can contribute to the following WELL criteria:
- Low VOC / VOC Reduction: ATLAS is low VOC
  - Toxic Material Reduction: ATLAS is free of PFCs, flame retardants, phthalates and urea formaldehyde