

ATELIER

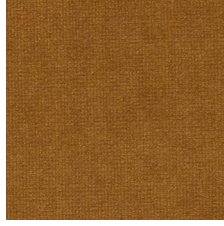
A beautiful luxurious velvet, ideal for acoustic drapery to reduce unwanted reverberation + soften sound within a space

INSTYLE

ATELIER



ATELIER Admire



ATELIER Glow



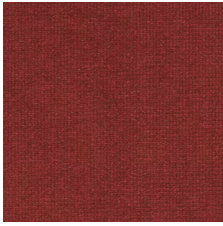
ATELIER Decadent



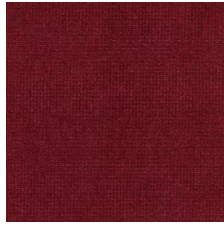
ATELIER Genie



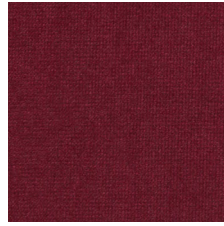
ATELIER Mango



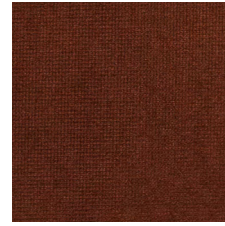
ATELIER Lava



ATELIER Exotic



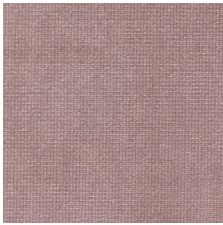
ATELIER Venetian



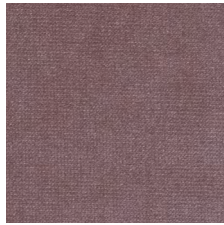
ATELIER Luxury



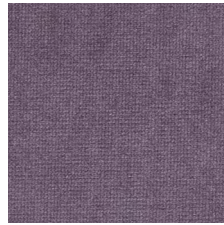
ATELIER Vintage



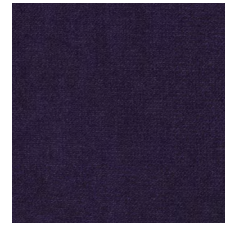
ATELIER Himalayan



ATELIER Ballet



ATELIER Nostalgia



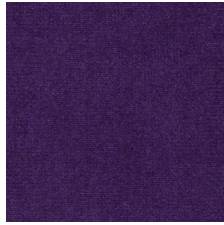
ATELIER Mystic



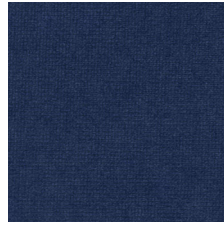
ATELIER Indulgent



ATELIER Opulent



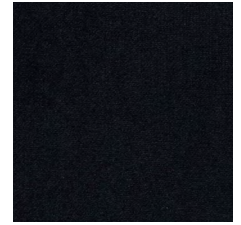
ATELIER Bloom



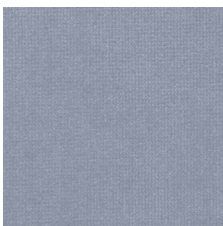
ATELIER Yale



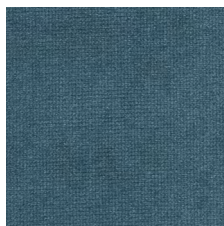
ATELIER Oxford



ATELIER Alibi



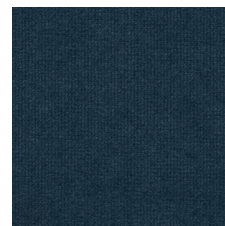
ATELIER Powder



ATELIER Ocean



ATELIER Impress



ATELIER Capri



ATELIER Jungle

Product may vary in colour due to the nature of the media
Please refer to website for current colour range

ATELIER



ATELIER Palm



ATELIER Hunter



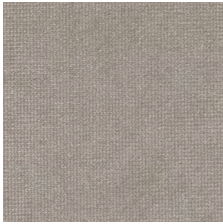
ATELIER Limelight



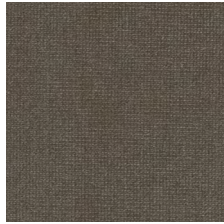
ATELIER Envy



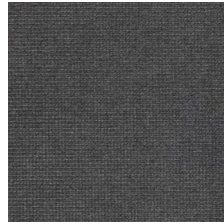
ATELIER Antique



ATELIER Breeze



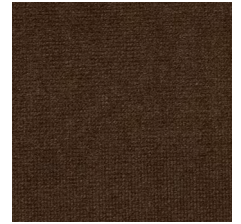
ATELIER Raw



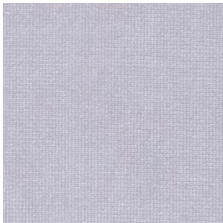
ATELIER Minx



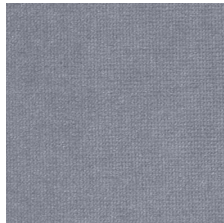
ATELIER Whimsy



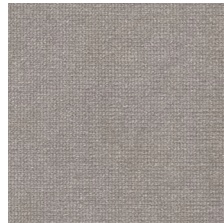
ATELIER Tawny



ATELIER Salt Lake



ATELIER Quartz



ATELIER Dreamy



ATELIER Runway



ATELIER Zen



ATELIER Ultra

Product may vary in colour due to the nature of the media
Please refer to website for current colour range



| | | |
|-------------------------------|--------------------------------------------------------------------------------------------------------------------------------|----|
| COMPOSITION | 92% polyester, 5% cotton, 3% latex | |
| WIDTH / WEIGHT | 140cm / 500gsm | |
| PATTERN REPEAT | nil | |
| ROLL SIZE | 40m approx. | |
| CARE CODE | Acoustic Drapery: Dryclean Only | |
| CTA RATING | <div> <div>sf</div> <div>COMMERCIAL SCREEN FABRICS</div> </div> | |
| SEAM SLIPPAGE AS2001.2.22 | Warp 2mm Weft 1mm Note: All seams must be overlocked or secured to prevent the premature failure of the seam due to fraying | |
| LIGHTFASTNESS ISO 105-B02 | >5 | |
| FIRE RATINGS AS/NZS 1530.3 | Ignitability | 11 |
| | Spread of Flame | 8 |
| | Heat Evolved | 4 |
| | Smoke Developed | 5 |
| AS/NZS 3837 | BCA Group 1 | |
| | Av. Specific Extinction Area 218 m ² /kg | |
| ISO 5660.1 | NZBC Group 1-S | |
| | Av. Specific Extinction Area 238m ² /kg | |
| Important | Please check your project requirements as the BCA flammability requirements for curtaining vary from state to state | |
| ACOUSTIC AS/ISO 354 | NRC 0.4 | |
| | Acoustic drapery helps reduce unwanted reverberation whilst softening sound within a space | |
| APPLICATION | acoustic drapery, upholstery, screen, wall panel | |
| IMPORTANT | Acoustic drapery must be lined if used on an external window | |
| PLEASE NOTE | Results from performance tests are guidelines only | |

SHADING / NAP

- The pile on velvet may flatten during upholstery or use. This is a normal characteristic of velvet and is not a fabric fault.
- A shading appearance during use should be expected, especially in areas of high use such as arms, seat fronts and back cushions.
- When upholstery it is important to pay attention to the nap direction. Velvet must be upholstered or sewn with the nap running in the same direction on panels / furniture.
- Failure to do this will result in adjoining panels / furniture showing a contrasting light and dark shading effect.

ENVIRONMENT

- Low VOC certified

GREEN STAR

ATELIER can contribute points to the following Green Star criteria:

- Low-VOC
- ATELIER can be used on white furniture certified to Ecospecifier, AFRDI, ECNZ and GECA. The Green Star Rating Tool states "Where at least 90% of an item's mass is certified to a GBCA recognised standard, the item can be entered as a certified product at Level A, B or C." Therefore any fabric can be used as fabrics are almost always under 10% by weight of a furniture item

LEED

ATELIER can contribute points to the following LEED criteria:

- Low-VOC

WELL

ATELIER can contribute to the following WELL criteria:

- Low VOC / VOC Reduction
- Toxic Material Reduction: ATELIER is free of PFCs, flame retardants, phthalates + urea formaldehyde