

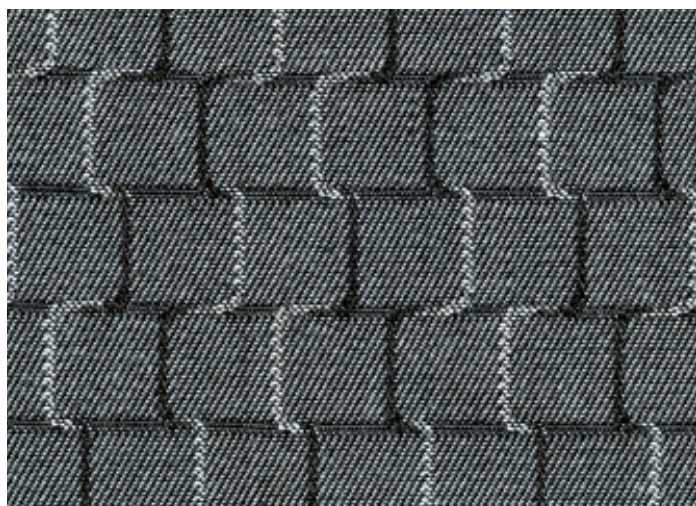
SIREN

A smart and subtle tonal textile pattern from the Scene collection.



INSTYLE

SIREN



COMPOSITION	100% polyester
WIDTH	137cm
WEIGHT	298gsm
PATTERN REPEAT	H 3.6cm V 21.6cm
ROLL SIZE	50m approx.
CARE CODE	CTA 1
ABRASION	
Martindale AS2001.2.25	43,000
Wyzenbeek ASTM 4157	100,000 double rubs
CTA RATING	<div> <div>hc</div> <div>HEAVY DUTY COMMERCIAL USE</div> </div>
SEAM SLIPPAGE AS2001.2.22	Warp 4.2mm Weft 3.2mm Note: All seams must be overlocked or secured to prevent the premature failure of the seam due to fraying
PILLING Martindale IWS196	4
LIGHTFASTNESS AS 2001.4.21	6
FIRE RATINGS AS/NZS 1530.3	Ignitability 11 Spread of Flame 0 Heat Evolved 2 Smoke Developed 4
AS/NZS 3837	BCA Group 1 Av. Specific Extinction Area 369m2/kg
APPLICATION	upholstery, screens, wall panelling
ORIGIN	Australia

ENVIRONMENT

- Environmentally Improved Production Process: reduced energy consumption, reuse and recycling of waste.

GREEN STAR

- SIREN can be used on white furniture certified to Ecospecifier, AFRDI, ECNZ and GECA.
- The Green Star Rating Tool states "Where at least 90% of an item's mass is certified to a GBCA recognised standard, the item can be entered as a certified product at Level A, B or C." Therefore any fabric can be used as fabrics are almost always under 10% by weight of a furniture item.