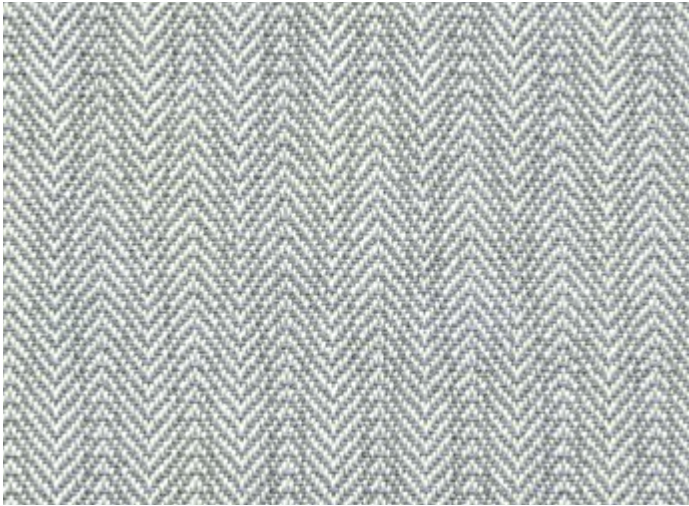




PULSE

An elegant LIFE Textiles®
pattern with a twist on the
classic herringbone

INSTYLE



COMPOSITION	100% Australian worsted EthEco® wool		
WIDTH / WEIGHT	137cm / 360gsm		
PATTERN REPEAT	H 1.5cm V 7.1cm		
ROLL SIZE	50m approx.		
CARE CODE	CTA 1		
ABRASION Martindale AS2001.2.25	59,250		
CTA RATING	<div> <div>hc</div> <div>HEAVY DUTY COMMERCIAL USE</div> </div>		
SEAM SLIPPAGE AS2001.2.22	Warp 7.0mm Weft 7.0mm Note: All seams must be overlocked or secured to prevent the premature failure of the seam due to fraying		
PILLING Martindale IWS196	5		
LIGHTFASTNESS ISO B05 102	Light 6-7, Med-Dark 6-7		
FIRE RATINGS AS/NZS 1530.3	Ignitability	10	
	Spread of Flame	0	
	Heat Evolved	0	
	Smoke Developed	3	
AS/NZS 3837	BCA Group 2 Av. Specific Extinction Area 111.2m ² /kg		
IMO Resolution A.652(16)	Sections 8.2 + 8.3: Pass		
Additional Fire Tests	California 117E, ASTM E84		
APPLICATION	upholstery, screens, wall panels		
ORIGIN	Australia		
PLEASE NOTE	Results from performance tests are guidelines only		

ENVIRONMENT

- 100% sustainable, rapidly renewable content: EthEco® wool is sourced from non-mulesed sheep cared for on holistically-managed farms
- Manufactured to strict environmental criteria (LIFE Textiles® specification)
- Environmentally Improved Production Process: reduced water and energy use, reuse of water (30%), recycling of waste, no hazardous substances
- Wool absorbs indoor air contaminants, benefiting indoor air quality
- PULSE is certified as low-VOC
- 100% biodegradable and recyclable

GREEN STAR

PULSE can contribute points to the following Green Star criteria:

- Stewardship Programs: PULSE can be reused or recycled through our Revive recycling program
- Low-VOC
- PULSE can be used on white furniture certified to Ecospecifier, AFRDI, ECNZ and GECA
- The Green Star Rating Tool states “Where at least 90% of an item’s mass is certified to a GBCA recognised standard, the item can be entered as a certified product at Level A, B or C.” Therefore any fabric can be used as fabrics are almost always under 10% by weight of a furniture item

LEED

PULSE can contribute points to the following LEED criteria:

- Bio-Based + Rapidly-Renewable Content (100%)
- Low-VOC
- Extended Producer Responsibility Recycling Program

WELL

PULSE can contribute to the following WELL criteria:

- Low VOC / VOC Reduction: PULSE is low VOC
- Toxic Material Reduction: PULSE is free of PFCs, flame retardants, phthalates and urea formaldehyde