

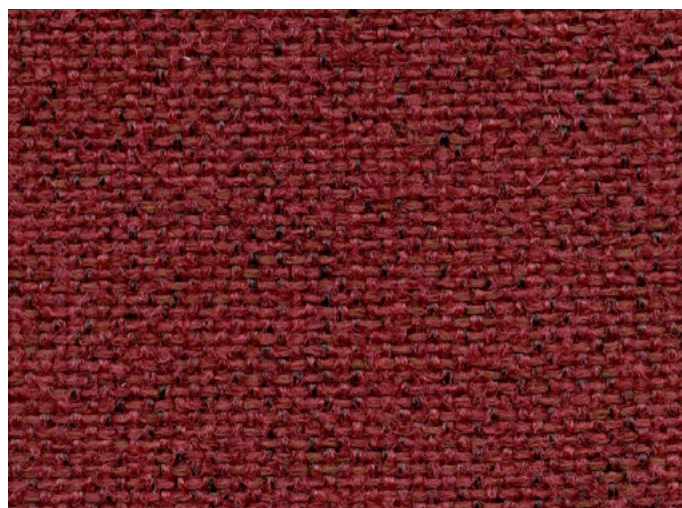
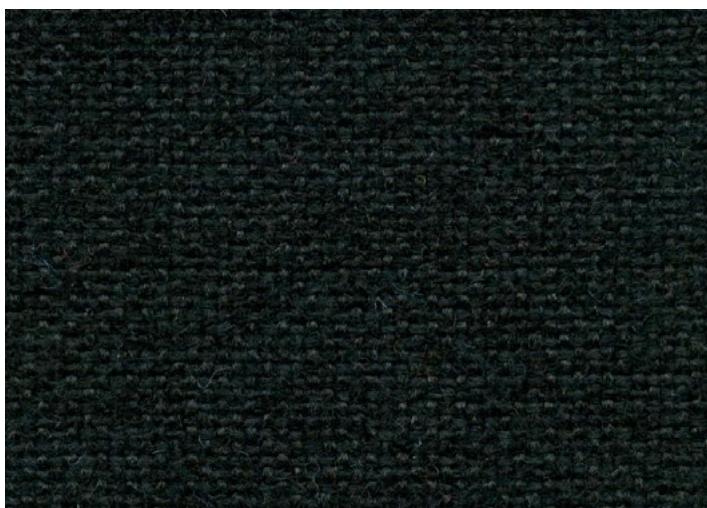
# NELSON




A classic and versatile  
fabric with a subtle  
texture

IINSTYLE

# NELSON



COMPOSITION	100% olefin								
WIDTH / WEIGHT	137cm / 191gsm								
PATTERN REPEAT	nil								
ROLL SIZE	60m approx.								
CARE CODE	CTA 1								
ABRASION Martindale AS2001.2.25	20,000								
CTA RATING	 GENERAL COMMERCIAL USE								
SEAM SLIPPAGE AS2001.2.22	Warp 7.7mm Weft 8mm Note: All seams must be overlocked or secured to prevent the premature failure of the seam due to fraying								
PILLING Martindale IWS196	5								
LIGHTFASTNESS AS 2001.4.21	5								
FIRE RATINGS AS/NZS 1530.3	<table border="0"> <tr> <td>Ignitability</td> <td>12</td> </tr> <tr> <td>Spread of Flame</td> <td>0</td> </tr> <tr> <td>Heat Evolved</td> <td>2</td> </tr> <tr> <td>Smoke Developed</td> <td>4</td> </tr> </table>	Ignitability	12	Spread of Flame	0	Heat Evolved	2	Smoke Developed	4
Ignitability	12								
Spread of Flame	0								
Heat Evolved	2								
Smoke Developed	4								
APPLICATION	upholstery, screen								
PLEASE NOTE	Results from performance tests are guidelines only								

## ENVIRONMENT

- 100% low-embodied-energy material: Olefin has a lower embodied energy compared to polyester or nylon.
- Environmentally Improved Production Process: Reduced water and energy use, reuse of water (30%), recycling of waste, no hazardous substances such as heavy metal dyes.
- Low VOC certified

## GREEN STAR

NELSON can contribute points to the following Green Star criteria:

- Low-VOC
- NELSON can be used on white furniture certified to Ecospecifier, AFRDI, ECNZ and GECA. The Green Star Rating Tool states "Where at least 90% of an item's mass is certified to a GBCA recognised standard, the item can be entered as a certified product at Level A, B or C." Therefore any fabric can be used as fabrics are almost always under 10% by weight of a furniture item

## LEED

NELSON can contribute points to the following LEED criteria:

- Low-VOC

## WELL

NELSON can contribute to the following WELL criteria:

- Low VOC / VOC Reduction
- Toxic Material Reduction: NELSON is free of PFCs, flame retardants, phthalates + urea formaldehyde