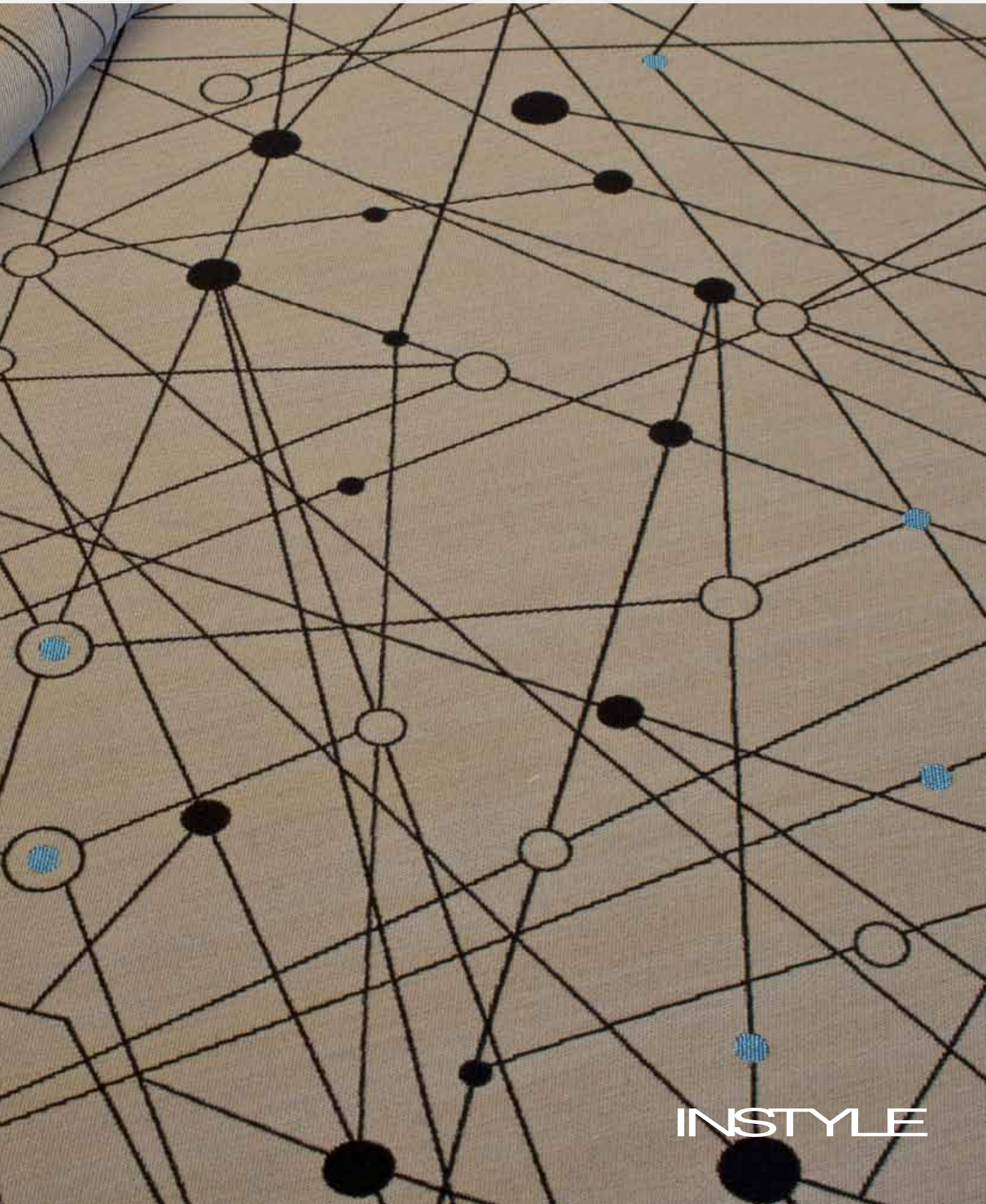


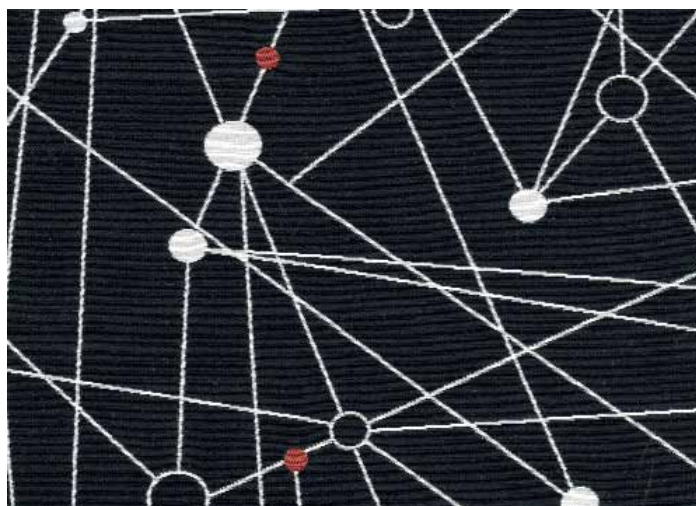
MOLECULAR

Inspired by the unexpected, a dynamic and abstract fabric pattern by Ilias.



INSTYLE

MOLECULAR by Ilias



COMPOSITION	69% cotton, 31% nylon
WIDTH	137 cm
WEIGHT	361gsm
PATTERN REPEAT	H 70cm V 93.5cm
ROLL SIZE	55 m approx.
CARE CODE	CTA 1
ABRASION Wyzenbeek ASTM 4157 Martindale AS2001.2.25	>100,000 double rubs >100,000
CTA RATING	hc HEAVY DUTY COMMERCIAL USE
SEAM SLIPPAGE AS2001.2.22	Warp 3.0 mm Weft 1.6 mm Note: All seams must be overlocked or secured to prevent the premature failure of the seam due to fraying
PILLING Martindale IWS196	5
LIGHTFASTNESS ISO 105 B02	6
FIRE RATINGS AS/NZS 1530.3	Ignitability 10 Spread of Flame 0 Heat Evolved 1 Smoke Developed 4
AS/NZS 3837	BCA Group 2 Av. Specific Extinction Area 63.3 m ² /kg
APPLICATION	upholstery, screens, wall panels

ENVIRONMENT

- 69% rapidly renewable content (cotton).
- Environmentally Improved Production Process: reduced energy consumption, reuse and recycling of waste, and use of environmentally optimised dyes.
- Cotton absorbs prevalent indoor air contaminants therefore benefiting indoor air quality.
- Reusable and 69% biodegradable (natural fibre content).
- The manufacturer has an environmental policy.

GREEN STAR + LEED

- MOLECULAR can be used on white furniture certified to Ecospecifier, AFRDI, ECNZ and GECA.
- The Green Star Rating Tool states "Where at least 90% of an item's total mass is certified to a GBCA recognised standard, the item can be entered as a certified product at Level A, B or C." Therefore any fabric can be used as fabrics are almost always under 10% by weight of a furniture item.
- 69% rapidly renewable content contributes to LEED MR Credit 6 Rapidly Renewable Materials.