

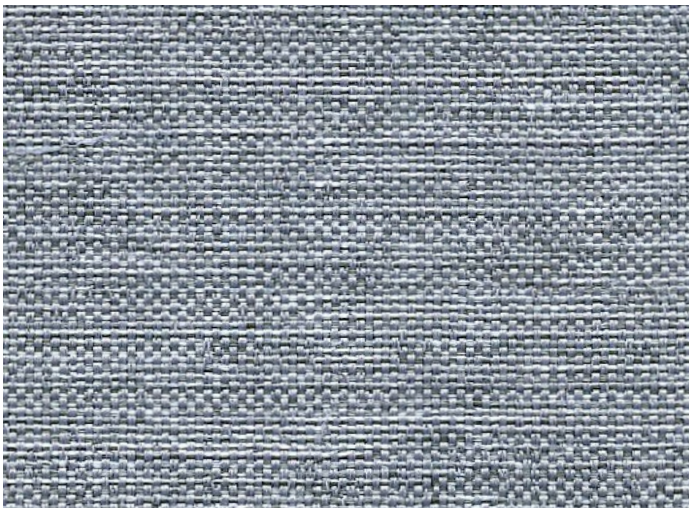
GENRE

—
A versatile textile with
a timeless linen aesthetic



INSTYLE

GENRE



COMPOSITION	51% polypropylene, 49% polyester
WIDTH / WEIGHT	137cm / 297gsm
PATTERN REPEAT	nil
ROLL SIZE	50m approx.
CARE CODE	CTA 1
ABRASION Martindale AS 2001.2.25	100,000
CTA RATING	hc HEAVY DUTY COMMERCIAL USE
SEAM SLIPPAGE AS2001.2.22	Warp 3mm Weft 3mm Note: All seams must be overlocked or secured to prevent the premature failure of the seam due to fraying
PILLING Martindale IWS196	5
LIGHTFASTNESS ISO 105/B02	>6
FIRE RATINGS AS/NZS 1530.3	Ignitability 11 Spread of Flame 0 Heat Evolved 1 Smoke Developed 5
AS/NZS 3837	BCA Group 2 Av. Specific Extinction Area 367m2/kg
APPLICATION	upholstery, screens, wall panels
ORIGIN	Made in Australia
PLEASE NOTE	Results from performance tests are guidelines only

ENVIRONMENT

- 100% third-party certified polypropylene + polyester yarns: meet human ecological requirements according to Oeko-Tex Standard 100 Class I.
- Manufacturer has reduced water + energy use, reuse + recycling of waste
- Low VOC certified

GREEN STAR

GENRE can contribute points to the following Green Star criteria:

- Low-VOC
- GENRE can be used on white furniture certified to Ecospecifier, AFRDI, ECNZ and GECA. The Green Star Rating Tool states "Where at least 90% of an item's mass is certified to a GBCA recognised standard, the item can be entered as a certified product at Level A, B or C." Therefore any fabric can be used as fabrics are almost always under 10% by weight of a furniture item

LEED

GENRE can contribute points to the following LEED criteria:

- Low-VOC

WELL

GENRE can contribute to the following WELL criteria:

- Low VOC / VOC Reduction
- Toxic Material Reduction: GENRE is free of PFCs, flame retardants, phthalates + urea formaldehyde