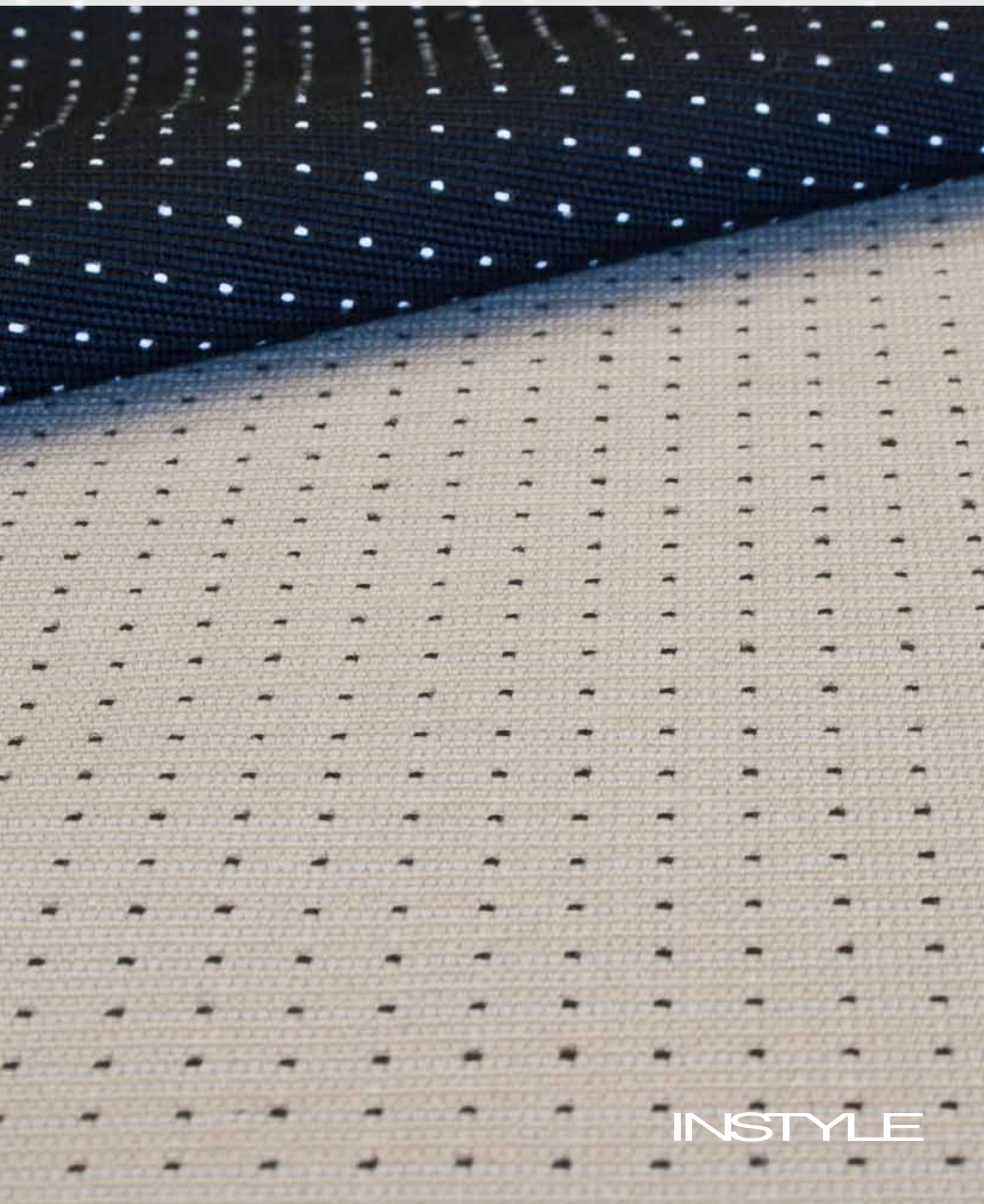


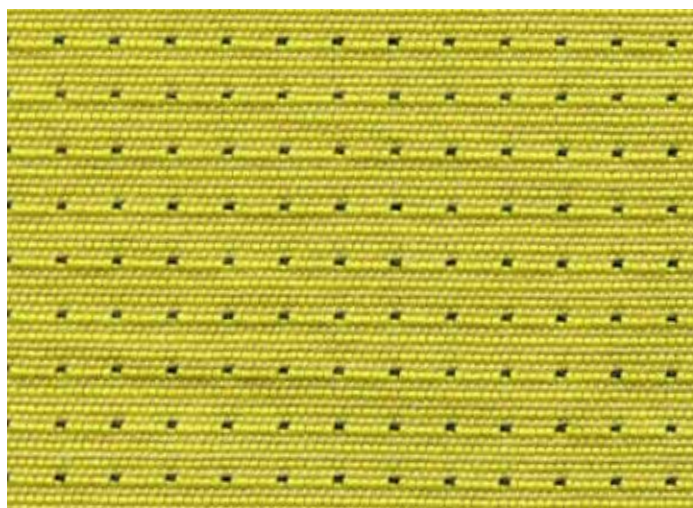
# CITY


A contemporary and classic textile with a playful circular pattern.



INSTYLE

# CITY



COMPOSITION	56% polyester, 44% polypropylene
WIDTH / WEIGHT	137cm / 363gsm
PATTERN REPEAT	H 0.7cm V 0.7cm
ROLL SIZE	50m approx.
CARE CODE	CTA 1
ABRASION Martindale AS2001.2.25 Wyzenbeek ASTM 4157	26,500 >100,000 double rubs
CTA RATING	 GENERAL COMMERCIAL USE
SEAM SLIPPAGE AS2001.2.22	Warp 5.3mm Weft 3.3mm Note: All seams must be overlocked or secured to prevent the premature failure of the seam due to fraying
PILLING Martindale IWS196	3/4
LIGHTFASTNESS AS 2001.4.21	> 6
FIRE RATINGS AS/NZS 1530.3	Ignitability 11 Spread of Flame 0 Heat Evolved 2 Smoke Developed 5
AS/NZS 3837 (Cone Calorimeter)	BCA Group 2 Av. Specific Extinction Area 298.8 m2/kg
APPLICATION	upholstery, screens, wall panelling
ORIGIN	Australia

## ENVIRONMENT

- 44% low embodied-energy material: polypropylene has a lower embodied-energy compared to polyester and nylon.
- Environmentally Improved Production Process: reduced energy consumption, reuse and recycling of waste.

## GREEN STAR

- CITY can be used on white furniture certified to Ecospecifier, AFRDI, GECA and ECNZ.
- The Green Star Rating Tool states “Where at least 90% of an item’s mass is certified to a GBCA recognised standard, the item can be entered as a certified product at Level A, B or C.” Therefore any fabric can be used as fabrics are almost always under 10% by weight of a furniture item.