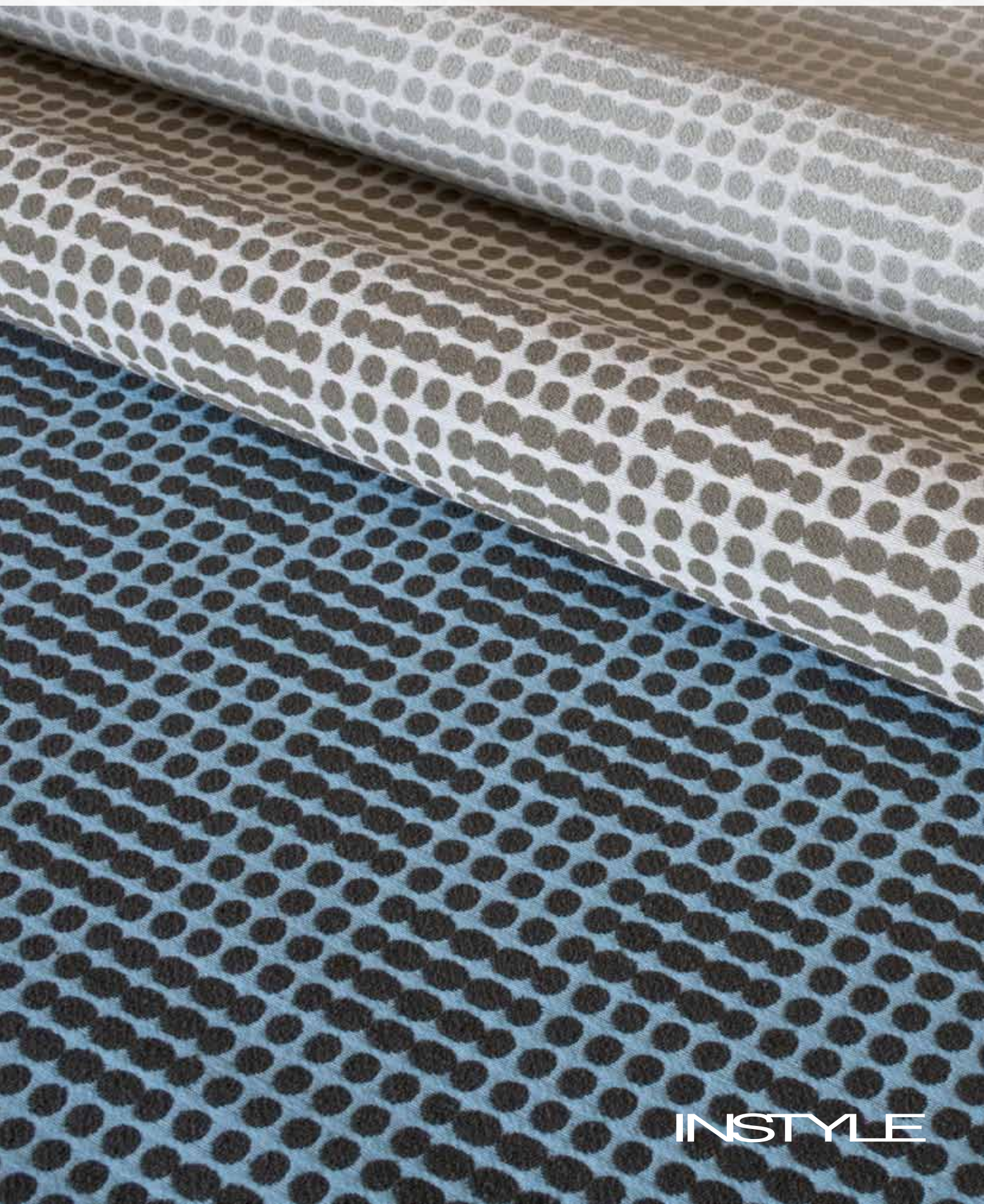


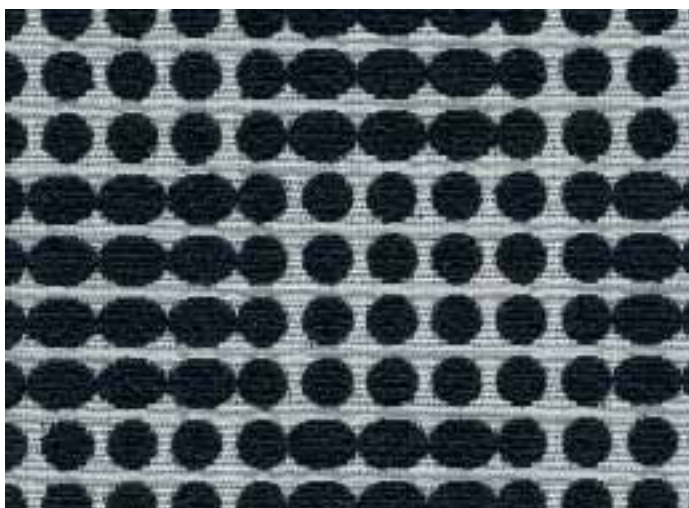
BLINK


Designed by Ilias, a contemporary high impact 3D textile that invites touch.



INSTYLE

BLINK by Ilias



| | |
|---|--|
| COMPOSITION | 61% cotton, 39% nylon |
| WIDTH | 137cm |
| WEIGHT | 384gsm |
| PATTERN REPEAT | H 7.5cm V 6.3cm |
| ROLL SIZE | 55m approx. |
| CARE CODE | CTA 1 |
| ABRASION Wyzenbeek ASTM 4157 Martindale AS2001.2.25 | 100,000 double rubs 31,000 |
| CTA RATING |  GENERAL COMMERCIAL USE |
| SEAM SLIPPAGE AS2001.2.22 | Warp 2.2mm Weft 2.3mm Note: All seams must be overlapped or secured to prevent the premature failure of the seam due to fraying |
| PILLING Martindale IWS196 | 5 |
| LIGHTFASTNESS ISO 105 B02 | >6 |
| FIRE RATINGS AS/NZS 1530.3 | Ignitability 8 Spread of Flame 0 Heat Evolved 2 Smoke Developed 4 |
| AS/NZS 3837 (Cone Calorimeter) | BCA Group 2 Av. Specific Extinction Area 101.2m ² /kg |
| APPLICATION | upholstery, screens, wall panels |

ENVIRONMENT

- 61% rapidly-renewable content (cotton).
- Environmentally Improved Production Process: reduced energy consumption, reuse and recycling of waste, and use of environmentally optimised dyes.
- The manufacturer has an environmental policy.
- Cotton absorbs prevalent indoor air contaminants therefore benefiting indoor air quality.
- Reusable and 61% biodegradable (natural fibre content).

GREEN STAR + LEED

- BLINK can be used on white furniture certified to Ecospecifier, AFRDI, GECA and ECNZ.
- The Green Star Rating Tool states “Where at least 90% of an item’s mass is certified to a GBCA recognised standard, the item can be entered as a certified product at Level A, B or C.” Therefore any fabric can be used as fabrics are almost always under 10% by weight of a furniture item.
- 61% rapidly renewable content contributes to LEED MR Credit 6 Rapidly Renewable Materials.