

# ATELIER



A beautiful soft and luxurious velvet, ideal for upholstery + acoustic drapery



INSTYLE

# ATELIER



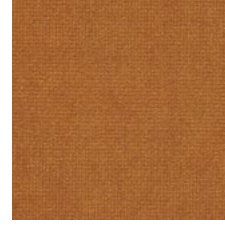
ATELIER Admire



ATELIER Glow



ATELIER Decadent



ATELIER Genie



ATELIER Mango



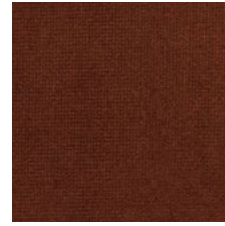
ATELIER Lava



ATELIER Exotic



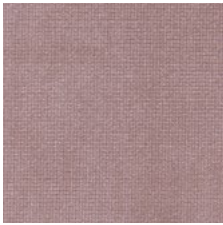
ATELIER Venetian



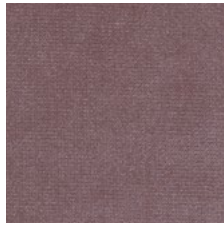
ATELIER Luxury



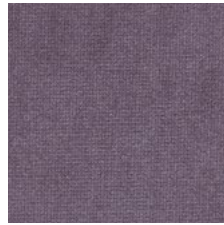
ATELIER Vintage



ATELIER Himalayan



ATELIER Ballet



ATELIER Nostalgia



ATELIER Mystic



ATELIER Indulgent



ATELIER Opulent



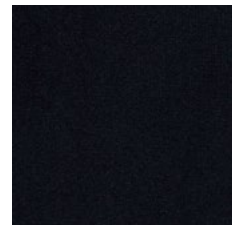
ATELIER Bloom



ATELIER Yale



ATELIER Oxford



ATELIER Alibi



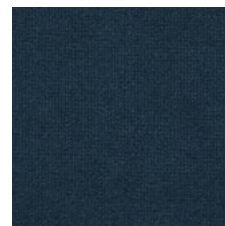
ATELIER Powder



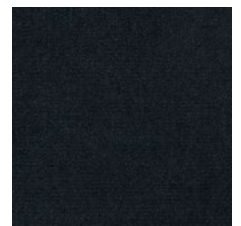
ATELIER Ocean



ATELIER Impress



ATELIER Capri



ATELIER Jungle

Product may vary in colour due to the nature of the media  
Please refer to website for current colour range

# ATELIER



ATELIER Palm



ATELIER Hunter



ATELIER Limelight



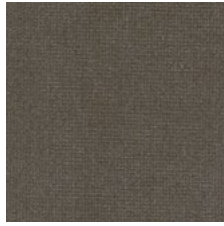
ATELIER Envy



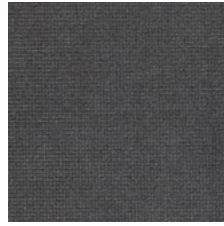
ATELIER Antique



ATELIER Breeze



ATELIER Raw



ATELIER Minx



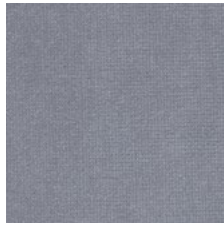
ATELIER Whimsy



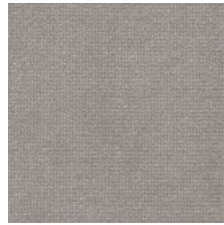
ATELIER Tawny



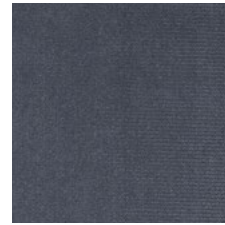
ATELIER Salt Lake



ATELIER Quartz



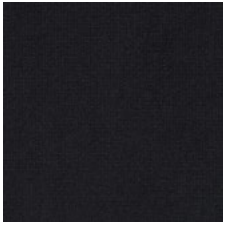
ATELIER Dreamy



ATELIER Runway



ATELIER Zen



ATELIER Ultra

Product may vary in colour due to the nature of the media  
Please refer to website for current colour range

# ATELIER



COMPOSITION	92% polyester, 5% cotton, 3% latex	
WIDTH / WEIGHT	140cm / 500gsm	
PATTERN REPEAT	nil	
ROLL SIZE	40m approx.	
CARE CODE	Upholstery: CTA 2 Acoustic Drapery: Dryclean Only	
ABRASION		
Martindale AS2001.2.25	>100,000	
Stoll AS2687.A 1997	2,500	
CTA RATING	<div style="display: flex; align-items: center;"> <div style="background-color: #333; color: white; padding: 5px; font-weight: bold; font-size: 1.2em; margin-right: 5px;">hc</div> <div> <p><b>HEAVY DUTY COMMERCIAL USE</b></p> </div> </div>	
SEAM SLIPPAGE	Warp 2mm Weft 1mm	
AS2001.2.22	Note: All seams must be overlapped or secured to prevent the premature failure of the seam due to fraying	
PILLING	5	
LIGHTFASTNESS	>5	
ISO 105-B02		
FIRE RATINGS		
AS/NZS 1530.3	Ignitability	11
	Spread of Flame	8
	Heat Evolved	4
	Smoke Developed	5
AS/NZS 3837	BCA Group 1	
	Av. Specific Extinction Area 218 m <sup>2</sup> /kg	
ISO 5660.1	NZBC Group 1-S	
	Av. Specific Extinction Area 238m <sup>2</sup> /kg	
ACOUSTIC	NRC 0.4	
AS/ISO 354	Acoustic drapery helps reduce unwanted reverberation whilst softening sound within a space	
APPLICATION	upholstery, screen, wall panel, acoustic drapery	
PLEASE NOTE	Results from performance tests are guidelines only	

## INTERLINER USE

- It is important to use an interliner between the ATELIER velvet and the substrate. Failure to do so will void the product warranty.

## SHADING / NAP

- The pile on velvet may flatten during upholstery or use. This is a normal characteristic of velvet and is not a fabric fault.
- A shading appearance during use should be expected, especially in areas of high use such as arms, seat fronts and back cushions.
- When upholstery it is important to pay attention to the nap direction. Velvet must be upholstered or sewn with the nap running in the same direction on panels / furniture.
- Failure to do this will result in adjoining panels / furniture showing a contrasting light and dark shading effect.

## ENVIRONMENT

- Low VOC certified

## GREEN STAR

ATELIER can contribute points to the following Green Star criteria:

- Low-VOC
- ATELIER can be used on white furniture certified to Ecospecifier, AFRDI, ECNZ and GECA. The Green Star Rating Tool states "Where at least 90% of an item's mass is certified to a GBCA recognised standard, the item can be entered as a certified product at Level A, B or C." Therefore any fabric can be used as fabrics are almost always under 10% by weight of a furniture item

## LEED

ATELIER can contribute points to the following LEED criteria:

- Low-VOC

## WELL

ATELIER can contribute to the following WELL criteria:

- Low VOC / VOC Reduction
- Toxic Material Reduction: ATELIER is free of PFCs, flame retardants, phthalates + urea formaldehyde