

# SOURCE

—  
A classic and versatile  
LIFE Textiles® texture with  
high durability



INSTYLE

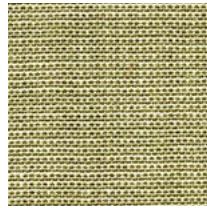
# SOURCE



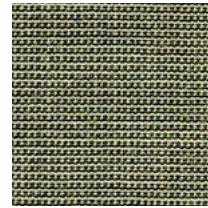
SOURCE Comfort



SOURCE Natural



SOURCE Air



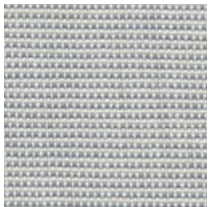
SOURCE Pure



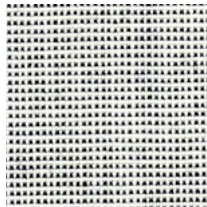
SOURCE Create



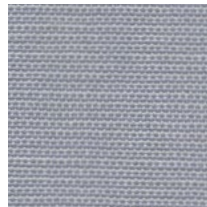
SOURCE Nourish



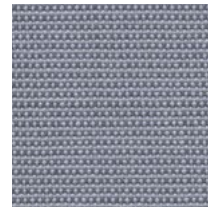
SOURCE Local



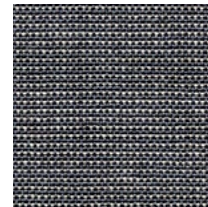
SOURCE Pride



SOURCE Truth



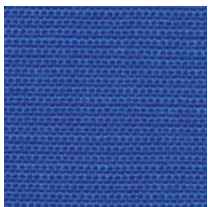
SOURCE Unit



SOURCE Hidden



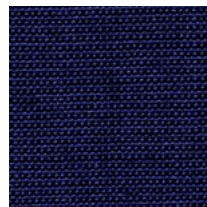
SOURCE Origin



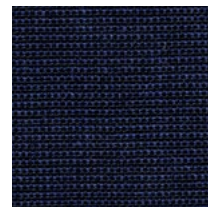
SOURCE Global



SOURCE Sanctuary



SOURCE Water



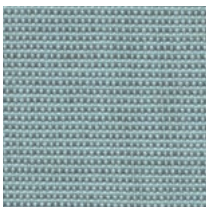
SOURCE Rain



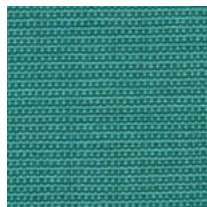
SOURCE Well



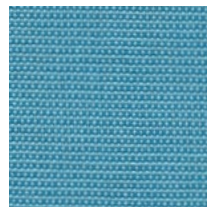
SOURCE Details



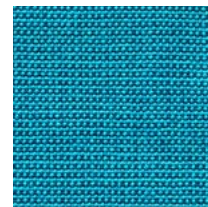
SOURCE Haven



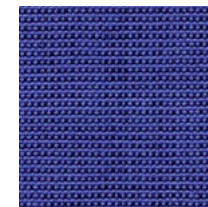
SOURCE Brilliance



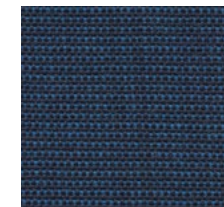
SOURCE Relaxation



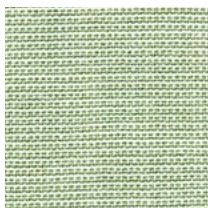
SOURCE Wonder



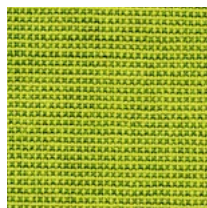
SOURCE Strength



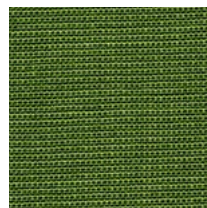
SOURCE Fulfilment



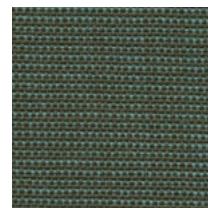
SOURCE Spring



SOURCE Erer



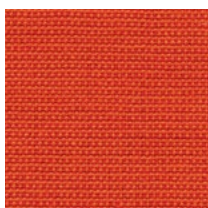
SOURCE Joy



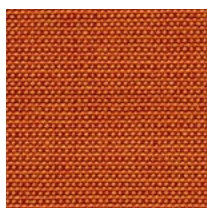
SOURCE Essence



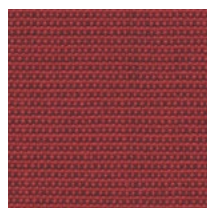
SOURCE Knowledge



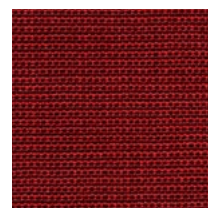
SOURCE Amusement



SOURCE Vitality



SOURCE Major



SOURCE Tomato



SOURCE Cee

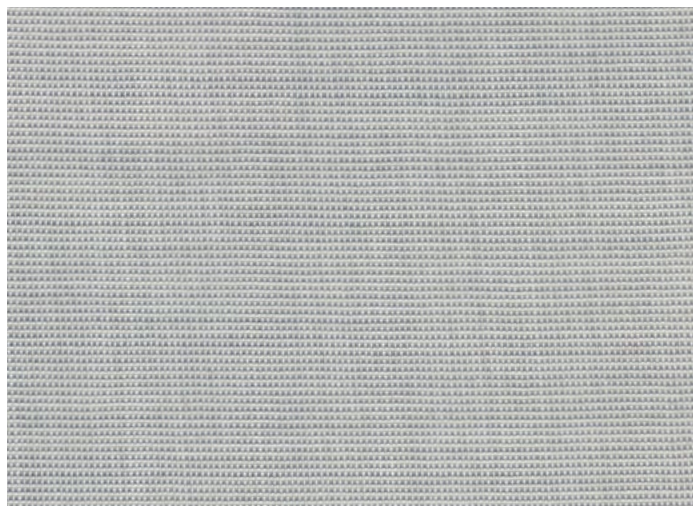


SOURCE Beauty

Product may vary in colour due to the nature of the media  
Please refer to product page on website for current colour range

INSTYLE.COM.AU

INSTYLE



COMPOSITION	100% Australian worsted EthEco® wool	
WIDTH / WEIGHT	188cm / 320gsm	
PATTERN REPEAT	nil	
ROLL SIZE	50m approx.	
CARE CODE	Upholstery: CTA 1 Screen: ICT Screens	
ABRASION		
Wyzenbeek ASTM 4157	150,000 double rubs	
Martindale AS2001.2.25	44,500	
CTA RATING	<b>hc</b>	HEAVY DUTY COMMERCIAL USE
SEAM SLIPPAGE	Warp 3.5mm Weft 5.7mm	
AS2001.2.22	Note: All seams must be overlapped or secured to prevent the premature failure of the seam due to fraying	
PILLING	5	
Martindale IWS196		
LIGHTFASTNESS	5	
FIRE RATINGS	Ignitability	10
AS/NZS 1530.3	Spread of Flame	0
	Heat Evolved	0
	Smoke Developed	4
AS/NZS 3837	BCA Group 1	
	Av. Specific Extinction Area 75.5m <sup>2</sup> /kg	
ISO 5660.1	NZBC Group 1-S	
	Av. Specific Extinction Area 89.6m <sup>2</sup> /kg	
Additional Fire Tests	California 117E, ASTM E84	
ACOUSTIC	NRC 0.55	
AS/ISO 354	Acoustic drapery helps reduce unwanted reverberation whilst softening sound within a space	
APPLICATION	Upholstery seating, screens, wall panels + acoustic drapery* *refer to acoustic drapery specification	
ORIGIN	Made in Australia	
PLEASE NOTE	Results from performance tests are guidelines only	
INSTYLE.COM.AU		

## ENVIRONMENT

- 100% sustainable, rapidly renewable content: EthEco® wool is sourced from non-mulesed sheep cared for on holistically-managed farms
- Environmentally Improved Production Process: Manufactured to strict environmental criteria, reduced water and energy use, reuse of water (30%), recycling of waste, no hazardous substances
- Wool absorbs indoor air contaminants, benefiting indoor air quality
- SOURCE is certified as low-VOC
- 100% biodegradable and recyclable

## GREEN STAR

SOURCE can contribute points to the following Green Star criteria:

- Stewardship Programs: SOURCE can be reused or recycled through our Revive recycling program
- Low-VOC
- SOURCE can be used on white furniture certified to Ecospecifier, AFRDI, ECNZ and GECA
- The Green Star Rating Tool states "Where at least 90% of an item's mass is certified to a GBCA recognised standard, the item can be entered as a certified product at Level A, B or C." Therefore any fabric can be used as fabrics are almost always under 10% by weight of a furniture item

## LEED

SOURCE can contribute points to the following LEED criteria:

- Bio-Based + Rapidly-Renewable Content (100%)
- Low-VOC
- Extended Producer Responsibility Recycling Program

## WELL

SOURCE can contribute to the following WELL criteria:

- Low VOC / VOC Reduction: SOURCE is low VOC
- Toxic Material Reduction: SOURCE is free of PFCs, flame retardants, phthalates and urea formaldehyde