

BURSA

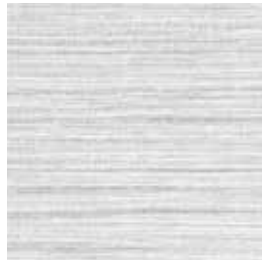
A PVC-free high performance wallcovering with a silk-like texture

INSTYLE

Bursa



Opalite BRS-001



Quartz BRS-002



Morganite BRS-003



Agate BRS-005



Moonstone BRS-004



Hematite BRS-006



Tourmaline BRS-007



Garnet BRS-009



Emerald BRS-008



Lapis BRS-010

Patterns shown are not to scale
Product may vary in colour due to the nature of the media
Please refer to website for current colour range

INSTYLE



FACE COMPOSITION	olefin composite
BACKING TYPE	osnaburg
WIDTH	137cm
WEIGHT	452gsm / 619g lineal m
PATTERN REPEAT	non-match
ROLL SIZE	27.4m approx. Note: minimum order quantity is 10.9m and 0.9m multiples
PERFORMANCE	Type II Wallcovering
FIRE RATING ASNZS 3837 (AS 5637.1)	Group Number 2 Av. Specific Extinction Area 80.5m ² /kg
ISO 5660.1	Group 3 Av. Specific Extinction Area 38.1m ² /kg
Additional Fire Tests	ASTM E-84 Tunnel Test Class A
ENVIRONMENT	20% recycled content

PRODUCT INSTALLATION

- Refer to our detailed installation instructions for Bursa supplied with each shipment before cutting or installing this wallcovering. A copy can also be downloaded from our website. Hang material in sequence as cut from the roll.

CARE + MAINTENANCE

- General maintenance can be achieved with periodic dusting or vacuuming with a soft brush attachment.
- Remove ordinary dirt and smudges with a mild soap and warm water solution.
- Avoid all solvent based cleaners.
- Always test the solution on an inconspicuous portion of the wallcovering before proceeding, checking that there is no adverse effect on finish, colour or gloss.
- Care should be taken on dark colours due to the possibility of causing 'light marks'. Always use a blotting action rather than rubbing to avoid abrasion.
- Dry with a soft lint free cloth or towel.
- Bursa care and maintenance instructions are available on our website.

WARRANTY

- For a period of 3 years from date of invoice this wallcovering is guaranteed to be first quality and free of manufacturing defects. This warranty applies only to professionally applied installations according to the recommended installation instructions, and proper care and maintenance using appropriate cleaning agents as outlined in the care and maintenance instructions.

