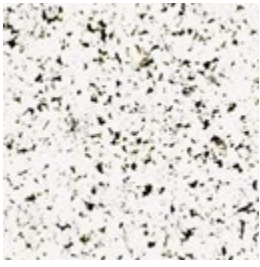


WHISTLER

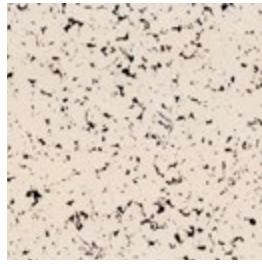
—
An exquisite timeless cork
wallcovering with a subtle
shimmer + soft hues

INSTYLE

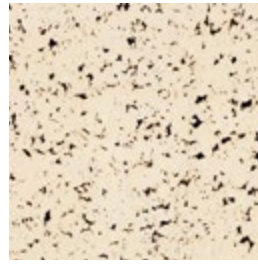
Whistler



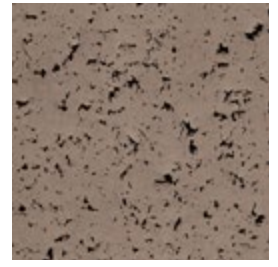
Amadora WHL-01



Santo WHL-02



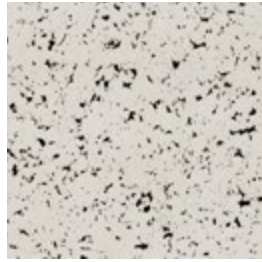
Braga WHL-03



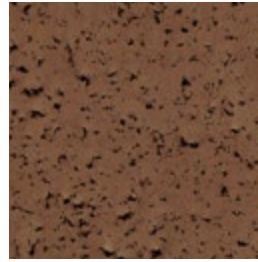
Porto WHL-10



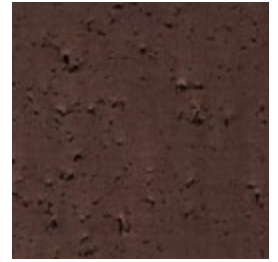
Evora WHL-04



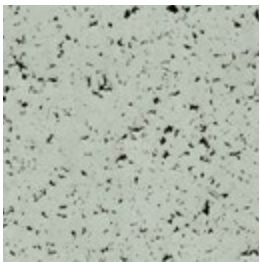
Beja WHL-05



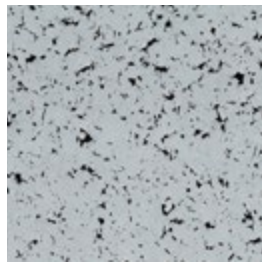
Sintra WHL-11



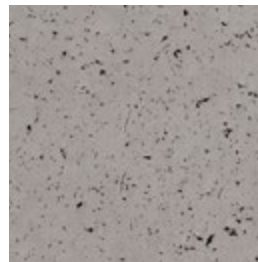
Tomar WHL-12



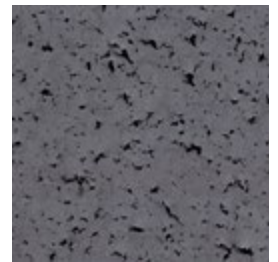
Lisbon WHL-09



Lagos WHL-08



Faro WHL-06



Garda WHL-07

Patterns shown are not to scale
Product may vary in colour due to the nature of the media
Please refer to website for current colour range

INSTYLE



FACE COMPOSITION	cork + metallic leaf
BACKING TYPE	non-woven
WIDTH	91cm
WEIGHT	237gsm / 216g lineal m
PATTERN REPEAT	non-match
ROLL SIZE	10.9m approx. NB: minimum order quantity is 10.9m (full roll) + 3.6m multiples
PERFORMANCE	Untyped Wallcovering
FIRE RATING AS/NZS 3837 (AS 5637.1)	BCA Group 2 Av. Specific Extinction Area 33.5m ² /kg
ISO 5660.1	Group 2S Av. Specific Extinction Area 12.6m ² /kg
ASTM E-84 Tunnel Test	Class A
PLEASE NOTE	Whistler may exhibit variations of colour and texture. This is natural characteristic of a handcrafted material and is not considered a defect. Seams may be obvious upon installation and there will be a panelling effect.

ENVIRONMENT

- Cork is a renewable natural resource, harvested from the bark of cork trees. The cork is sourced from a managed harvesting program with the expectation of each tree living approximately 150 years and regenerating its precious outer layer 12-13 times during the life cycle.
- All inks used are water soluble containing no heavy metals such as chromium, cadmium, mercury or lead.



PRODUCT INSTALLATION

- Please refer to installation instructions for Whistler supplied with each shipment.
- All material must be installed in numerical sequence as cut from the roll.

CARE + MAINTENANCE

- Due to the delicate nature of the finishes, care must be taken not to damage or mark the surface due to abrasion / rubbing.
- General maintenance can be achieved with periodic dusting or vacuuming with a soft brush attachment.
- Remove ordinary dirt and smudges with a mild soap and warm water solution.
- Always test the solution on an inconspicuous portion of the wallcovering before proceeding, checking that there is no adverse effect on finish, colour or gloss.
- Care should be taken on dark colours due to the possibility of causing 'light marks'. Always use a blotting action rather than rubbing to avoid abrasion.
- Dry with a soft lint free cloth or towel.
- Avoid alcohol / solvent based cleaners.
- Please refer to the Whistler care and maintenance instructions for further details.

WARRANTY

- For a period of 3 years from date of invoice this wallcovering is guaranteed to be first quality and free of manufacturing defects. This warranty applies only to professionally applied installations according to the recommended installation instructions, and proper care and maintenance using appropriate cleaning agents as outlined in the care and maintenance instructions.