

MAYFAIR

—
Layers of beautiful luxe materials create this decadent wallcovering

INSTYLE

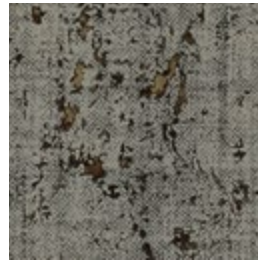
MAYFAIR



Oxford MFR-01



Bourdon MFR-02



Hertford MFR-04



Audley MFR-03



Regent MFR-05



Duke MFR-07



Lexington MFR-06

Patterns shown are not to scale
Product may vary in colour due to the nature of the media
Please refer to website for current colour range



FACE COMPOSITION	cork with metallic ink
BACKING TYPE	metallic paper
WIDTH	91cm
WEIGHT	277gsm / 252g lineal m
PATTERN REPEAT	non-match
ROLL SIZE	27.4m approx. Note: minimum order quantity is 10.9m and 0.9m multiples
PERFORMANCE	Untyped Wallcovering
FIRE RATING AS/NZS 3837 (AS 5637.1)	BCA Group 2 Av. Specific Extinction Area 33.5m ² /kg
ISO 5660.1	Group 2S Av. Specific Extinction Area 12.6m ² /kg
Additional Fire Tests	ASTM E-84 Tunnel Test Class A
PLEASE NOTE	MAYFAIR may exhibit variations of colour and texture. This is the natural characteristic of a handcrafted material and is not considered a defect. Seams may be obvious upon installation and there will be a panelling effect.

ENVIRONMENT

- Cork is a renewable natural resource, harvested from the bark of cork trees. The cork is sourced from a managed harvesting program with the expectation of each tree living approximately 150 years and re-generating its precious outer layer 12-13 times during the life cycle.
- All inks used are water soluble containing no heavy metals such as chromium, cadmium, mercury or lead.



PRODUCT INSTALLATION

- Please refer to installation instructions for MAYFAIR supplied with each shipment.
- All material must be installed in numerical sequence as cut from the roll.

CARE + MAINTENANCE

- Due to the delicate nature of the finishes, care must be taken not to damage or mark the surface due to abrasion / rubbing.
- General maintenance can be achieved with periodic dusting or vacuuming with a soft brush attachment.
- Remove ordinary dirt and smudges with a mild soap and warm water solution. Always test the solution on an inconspicuous portion of the wallcovering before proceeding, checking that there is no adverse effect on finish, colour or gloss. Care should be taken on dark colours due to the possibility of causing 'light marks'. Always use a blotting action rather than rubbing to avoid abrasion. Rinse thoroughly with clean water from the top down using a sponge.
- Dry with a soft lint free cloth or towel.
- Avoid alcohol / solvent based cleaners.
- Please refer to the MAYFAIR care and maintenance instructions for further details.

WARRANTY

- For a period of 3 years from date of invoice this wallcovering is guaranteed to be first quality and free of manufacturing defects. This warranty applies only to professionally applied installations according to the recommended installation instructions, and proper care and maintenance using appropriate cleaning agents as outlined in the care and maintenance instructions.