

# ISLA

—  
An exquisite natural cork wallcovering texture with foil highlights



INSTYLE

# Isla



Frost ISA-01



Summer ISA-02



Rye ISA-03



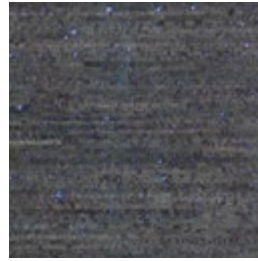
Poppy ISA-05



Fig ISA-04



Clove ISA-06



Lagoon ISA-07

Patterns shown are not to scale  
Product may vary in colour due to the nature of the media  
Please refer to website for current colour range



FACE COMPOSITION	Cork, metallic leaf
BACKING TYPE	Non-woven
WIDTH	91cm
WEIGHT	226gsm / 206g lineal m
PATTERN REPEAT	Non-match
ROLL SIZE	10.9m approx. Note: minimum order quantity is 10.9m and 0.9m multiples
PERFORMANCE	Untyped Wallcovering
FIRE RATING AS/NZS 3837 (AS 5637.1)	BCA Group 2 Av. Specific Extinction Area 33.5m <sup>2</sup> /kg
ISO 5660.1	Group 2S Av. Specific Extinction Area 12.6m <sup>2</sup> /kg
ASTM E-84 Tunnel Test	Class A
ENVIRONMENT	Made from renewable natural materials

**PRODUCT INSTALLATION**

- Detailed installation instructions for Isla are supplied with each shipment and should be referred to before cutting or installing this wallcovering.

**CARE + MAINTENANCE**

- General maintenance can be achieved with periodic dusting or vacuuming with a soft brush attachment.
- Remove ordinary dirt and smudges with a mild soap and warm water solution.
- Avoid all solvent based cleaners.
- Always test the solution on an inconspicuous portion of the wallcovering before proceeding, checking that there is no adverse effect on finish, colour or gloss.
- Care should be taken on dark colours due to the possibility of causing 'light marks'. Always use a blotting action rather than rubbing to avoid abrasion.
- Dry with a soft lint free cloth or towel.
- Isla care and maintenance instructions are available on our website.

**WARRANTY**

- For a period of 3 years from date of invoice this wallcovering is guaranteed to be first quality and free of manufacturing defects. This warranty applies only to professionally applied installations according to the recommended installation instructions, and proper care and maintenance using appropriate cleaning agents as outlined in the care and maintenance instructions.

