

# COAST

---

A classic high-performance  
Crypton® textile with a  
corduroy aesthetic

INSTYLE

# COAST



COAST Breeze



COAST Swell



COAST Drift



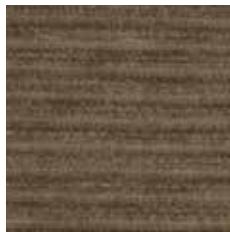
COAST Path



COAST Ebb



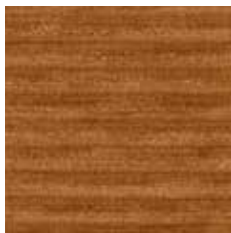
COAST Fringe



COAST Castaway



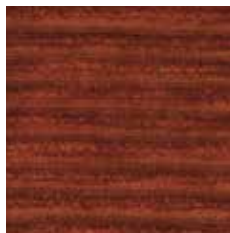
COAST Guard



COAST Along



COAST Line



COAST Journey



COAST Hideaway



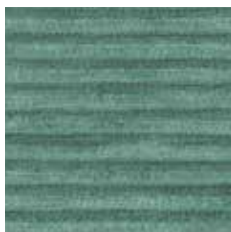
COAST Retreat



COAST To Coast



COAST Isle



COAST Marina



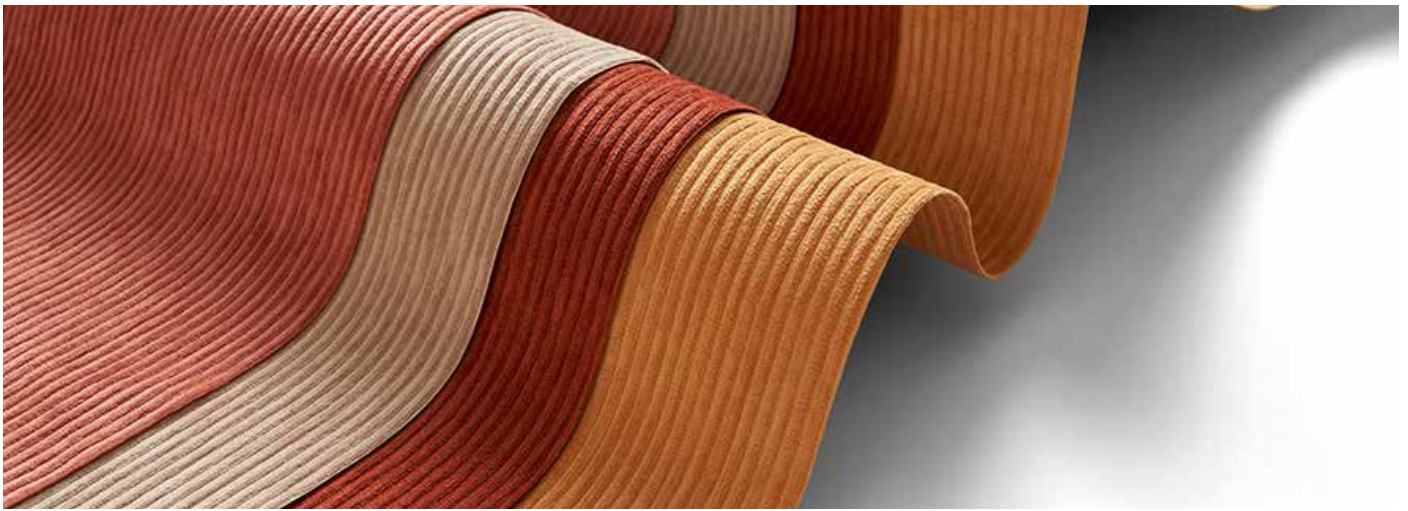
COAST Voyage



COAST Waterfront

Product may vary in colour due to the nature of the media  
Patterns shown are not to scale  
Please refer to website for current colour range





COMPOSITION	100% polyester + Crypton® finish and backing		
WIDTH / ROLL SIZE	137cm / 45m approx.		
WEIGHT	480gsm		
PATTERN REPEAT	H nil V 0.5cm		
CARE CODE	HP2		
ABRASION	45,000		
Martindale AS2001.2.25			
CTA RATING	<div> <div>hc</div> <div>HEAVY DUTY COMMERCIAL USE</div> </div>		
SEAM SLIPPAGE	Warp 3.8mm Weft 4mm		
AS2001.2.22			
PILLING	5		
Martindale IWS196			
LIGHTFASTNESS	5-6		
ISO 105-B02			
WATER REPELLENCY	Rating 80		
AATCC 22-2005 Spray Test			
FIRE RATINGS			
AS/NZS 1530.3	Ignitability	11	
	Spread of Flame	0	
	Heat Evolved	3	
	Smoke Developed	5	
AS/NZS 3837 (AS 56w37.1)	BCA Group 1		
	Av. Specific Extinction Area 103.3m <sup>2</sup> /kg		
ISO 5660.1	NZBC Group 1-S		
	Av. Specific Extinction Area 56.6m <sup>2</sup> /kg		
APPLICATION	Upholstery seating, screen, wall panel Ideal for healthcare, hospitality, workplace, public building, education + residential applications		
PLEASE NOTE	Results from performance tests are guidelines only		

#### IMPORTANT

- When upholstering it is important to pay attention to the nap direction. COAST must be cut and upholstered or sewn with the nap running in the same direction on panels / furniture.
- Failure to do this will result in adjoining panels and / or furniture showing a contrasting light and dark shading effect.

#### ENVIRONMENT

- Crypton® technology extends the life of a fabric minimising replacement thereby reducing landfill waste, fossil fuel consumption and greenhouse gas emissions.
- Crypton® fabric contributes to Green Star, LEED + WELL for Low-Emitting Material. Crypton manufacturing uses renewable energy and carbon offset credits.
- Crypton® fabric is free of potentially harmful levels of PFOS, PFOA, formaldehyde, heavy metals, phenols, phthalates, odour + skin sensitisers, halogenated flame retardants and does not require a Prop 65 warning label.

#### GREEN STAR

- COAST can be used on white furniture certified to Ecospecifier, AFRDI, ECNZ and GECA. The Green Star Rating Tool states "Where at least 90% of an item's mass is certified to a GBCA recognised standard, the item can be entered as a certified product at Level A, B or C." Therefore any fabric can be used as fabrics are almost always under 10% by weight of a furniture item.

#### WELL

COAST can contribute to the following WELL criteria:

- Toxic Material Reduction: COAST is free of PFCs, flame retardants, phthalates and urea formaldehyde

## PERFORMANCE

Coast features a Crypton® integrated fabric system and barrier to provide permanent stain, odour, antibacterial and antimicrobial protection. Crypton® fabrics are moisture resistant, easy to clean and bleach cleanable, thereby increasing the life of the product.

### Permanent Protection

Unlike applied coatings, topical treatments, or laminates, the Crypton® finish is engineered to penetrate right into the fabric, encapsulating every fibre. This provides permanent protection, preventing moisture, bacteria and stains from entering into fibres. This allows foreign substances to be easily removed from the fibres, which is why most soiling can simply be wiped away. No stains, fluid or bacteria will penetrate the fabric.

### Tiered System of Defence

Crypton® textiles provide multiple levels of protection against microbial growth including moulds.

1. Repellancy: Each and every fibre repels both oily and water-based liquid, diminishing the likelihood of having an environment suitable for growth.
2. Cleanability: Soil and stains that serve as food sources for microorganisms are easily removed with cleaning.
3. Silver Ion Technology: Silver Ion Technology resists the growth of microbes including bacteria.
4. Permanent Integrated Moisture Barrier: The only way to ensure fabrics can be disinfected by providing protection against 'behind the scenes' contamination.

### Easy to Clean and Disinfect

Crypton® textiles are easy to clean with mild powdered enzyme detergent and water so that the fabric remains clean and hygienically fresh.

Crypton® textiles are easy to disinfect with a solution of 10% bleach (sodium hypochlorite) and 90% water.

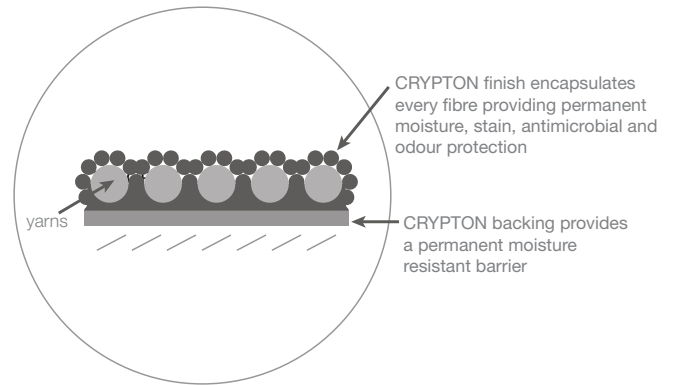
Refer to HP2 care instructions for full cleaning details.

### Benefits for Healthcare Interiors

Crypton® textiles offer permanent moisture, odour and bacteria protection on the fabric surface as well as within the fabric, which assists in extending the useful lifetime of the fabric and furniture.

Crypton® textiles inhibit the growth of bacteria (both gram positive and gram negative), mould, mildew and fungi both on the fabric surface and within the fabric. Silver Ion Technology controls bacteria by (1) blocking oxygen-transporting enzymes, (2) preventing cell growth by inactivating proteins of the bacteria, and (3) locking the cell membranes.

## Cross Section of Crypton® Fabric



## Benefits for Hospitality, Educational and Public Building Interiors

With the presence of food and drink, most other fabrics suffer from severe soiling, detracting from the cleanliness and appearance of the furniture. This can lead to the generation of unpleasant odours that the fabric can retain. Crypton® textiles however, are resistant to fluids penetrating the fabric, inhibiting the growth of bacteria, mould, mildew and fungi on the fabric surface and within the fabric.

Crypton® textiles are easy to clean and maintain, therefore retaining the fabric's appearance, keeping the fabric hygienically fresh and extending the useful lifetime of the product, allowing the fabric to retain its appearance as well as be kept hygienically clean.