

# GILDED CORK

A compelling wallcovering  
with the urban aesthetic of  
weathered concrete

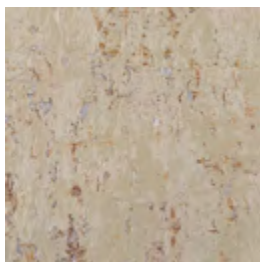


INSTYLE

# GILDED CORK



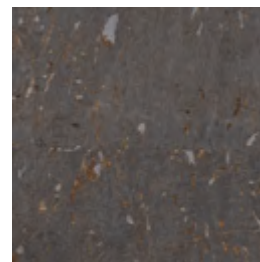
White Silver GCO-101



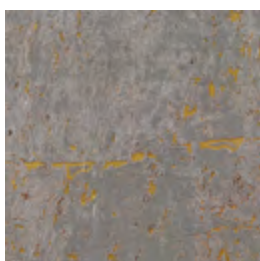
Light Brass GCO-102



Warm Gold GCO-105



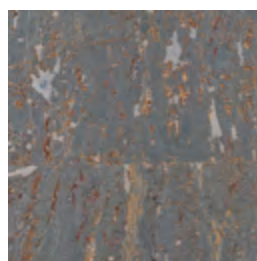
Verdant GCO-100



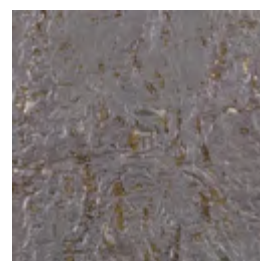
Cool Silver GCO-104



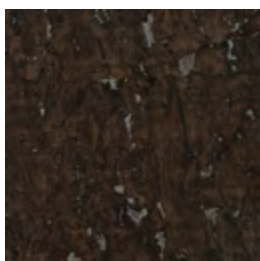
Palladium GCO-110



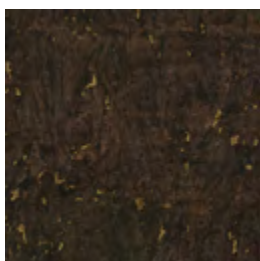
Cyan GCO-103



Titanium GCO-111



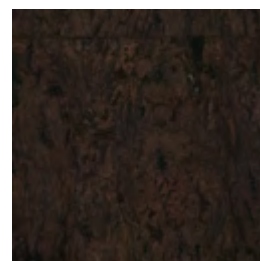
Tar GCO-108



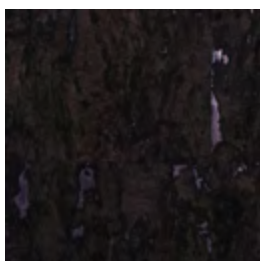
Carbon GCO-107



Rusted GCO-109



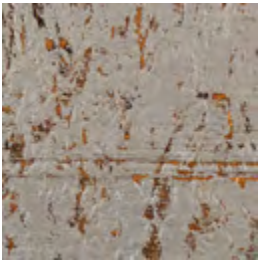
Smoked GCO-106



Silver Oak GCO-125

Patterns shown are not to scale  
Product may vary in colour due to the nature of the media  
Please refer to website for current colour range

# GILDED CORK Palette 2



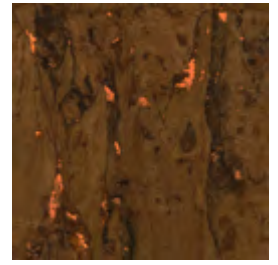
Frosted GCO-115



Aztec Gold GCO-116



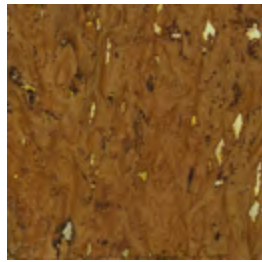
Penny GCO-118



Copper GCO-112



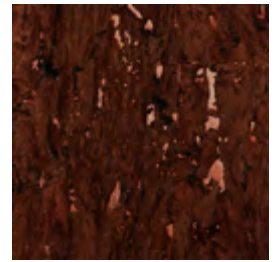
Antique Bronze GCO-119



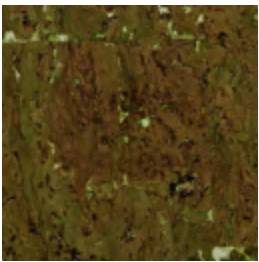
Tawny GCO-123



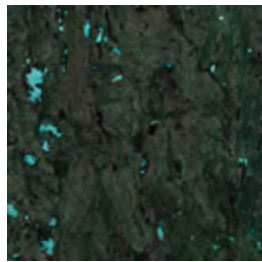
Walnut GCO-120



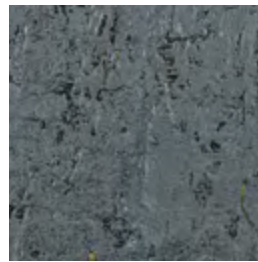
Auburn GCO-122



Jade GCO-124



Verdigris GCO-121

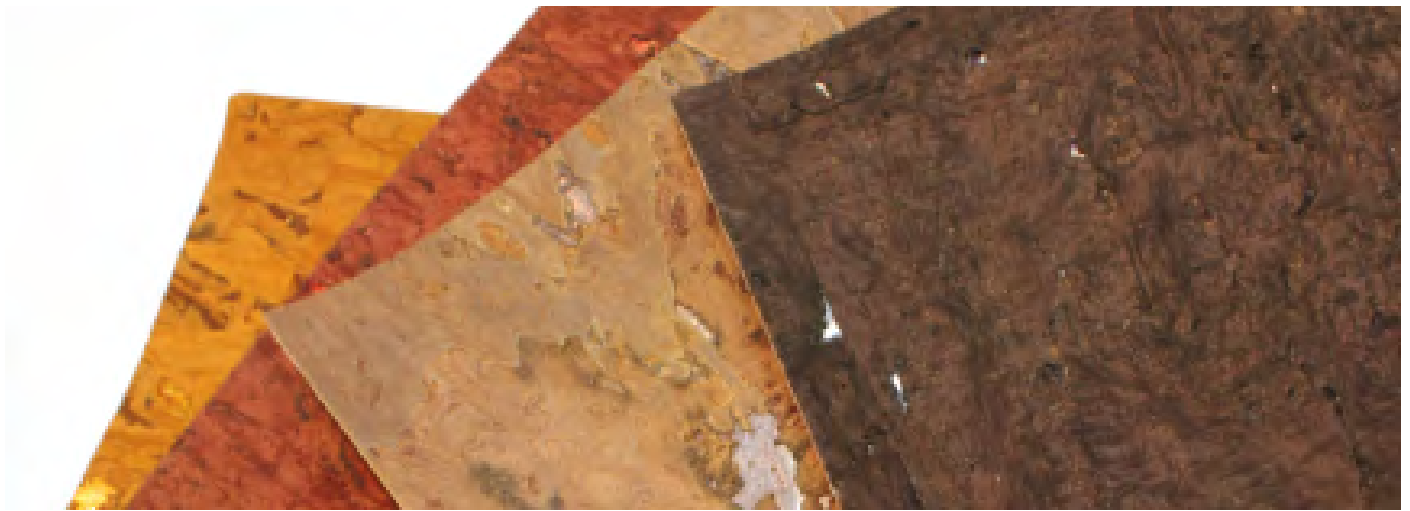


Marine GCO-114



Chrome GCO-117

Patterns shown are not to scale  
Product may vary in colour due to the nature of the media  
Please refer to website for current colour range



FACE COMPOSITION	cork, metallic leaf
BACKING TYPE	polyester, cellulose non-woven
WIDTH	91cm
WEIGHT	238gsm / 217g lineal m
PATTERN REPEAT	non-match
ROLL SIZE	27.4m approx. Note: minimum order quantity is 10.9m and 0.9m multiples
PERFORMANCE	Untyped Wallcovering
FIRE RATING AS/NZS 3837	BCA Group 1 Av. Specific Extinction Area 105.3 m2/kg
Additional Fire Tests	ASTM E-84 Tunnel Test Class A
PLEASE NOTE	GILDED CORK may exhibit variations of colour and texture. This is the natural characteristic of a handcrafted textile material and is not considered a defect. Seams may be obvious upon installation and there will be a panelling effect.

### PRODUCT INSTALLATION

- Please refer to installation instructions for GILDED CORK supplied with each shipment.
- All material must be installed in numerical sequence as cut from the roll.

### CARE + MAINTENANCE

- Due to the delicate nature of the finishes, care must be taken not to damage or mark the surface due to abrasion / rubbing.
- General maintenance can be achieved with periodic dusting or vacuuming with a soft brush attachment.
- Remove ordinary dirt and smudges with a mild soap and warm water solution. Always test the solution on an inconspicuous portion of the wallcovering before proceeding, checking that there is no adverse effect on finish, colour or gloss. Care should be taken on dark colours due to the possibility of causing 'light marks'. Always use a blotting action rather than rubbing to avoid abrasion. Rinse thoroughly with clean water from the top down using a sponge.
- Dry with a soft lint free cloth or towel.
- Avoid alcohol / solvent based cleaners.
- Please refer to the GILDED CORK care and maintenance instructions for further details.

### WARRANTY

- For a period of 3 years from date of invoice this wallcovering is guaranteed to be first quality and free of manufacturing defects. This warranty applies only to professionally applied installations according to the recommended installation instructions, and proper care and maintenance using appropriate cleaning agents as outlined in the care and maintenance instructions.

### ENVIRONMENT

- Cork is a renewable natural resource, harvested from the bark of cork trees.
- The cork is sourced from a managed harvesting program with the expectation of each tree living approximately 150 years and re-generating its precious outer layer 12-13 times during the life cycle.
- All inks used are water soluble containing no heavy metals such as chromium, cadmium, mercury or lead.

