

# FACET

—  
A unique handcrafted  
wallcovering made with  
wood veneer and foil

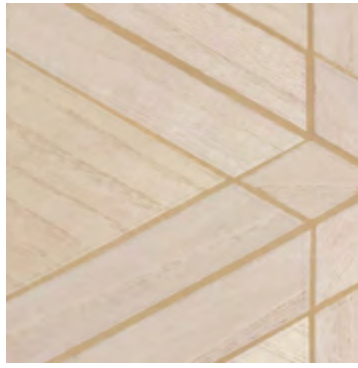


INSTYLE

# FACET



Talc FAC-01



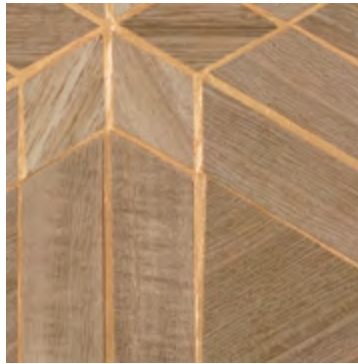
Feldspar FAC-02



Calomel FAC-03



Mica FAC-04



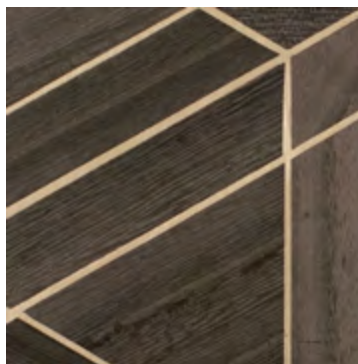
Tiger's Eye FAC-05



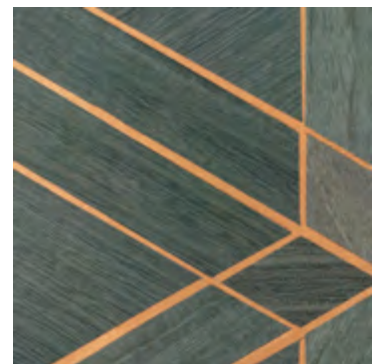
Galena FAC-06



Greywacke FAC-07



Violet Diamond FAC-08



Turquoise FAC-09

Patterns shown are not to scale  
Product may vary in colour due to the nature of the media  
Please refer to website for current colour range



<b>FACE COMPOSITION</b>	wood veneer with a foil underlay
<b>BACKING TYPE</b>	non-woven
<b>WIDTH</b>	91cm
<b>WEIGHT</b>	300gsm / 273g lineal m
<b>PATTERN REPEAT</b>	H 15.24cm V 15.24cm approx.
<b>ROLL SIZE</b>	10.9m approx. Note: minimum order quantity is 10.9m and 3.6m multiples
<b>PERFORMANCE</b>	Untyped Wallcovering
<b>FIRE RATING</b> AS/NZS 3837 (AS 5637.1)	BCA Group 1 Av. Specific Extinction Area 24.3 m2/kg
<b>ISO 5660.1</b>	NZBC Group 1S Av. Specific Extinction Area 20.1 m2/kg
<b>ASTM E-84 Tunnel Test</b>	Class A
<b>PLEASE NOTE</b>	FACET may exhibit variations of colour and texture. The appearance of wood knots can occur and is not considered a defect. This is integral to the beauty and character of the handcrafted organic material. Seams may be obvious upon installation and there will be a panelling effect.

## PRODUCT INSTALLATION

- Please refer to installation instructions for FACET supplied with each shipment. A copy is available on our website or contact your nearest office or agent.
- All material must be installed in numerical sequence as cut from the roll.

## CARE + MAINTENANCE

- Due to the delicate nature of the finishes, care must be taken not to damage or mark the surface due to abrasion / rubbing.
- General maintenance can be achieved with periodic dusting or vacuuming with a soft brush attachment.
- Remove ordinary dirt and smudges with a mild soap and warm water solution.
- Avoid over soaking wallcovering as it may cause damage.
- Always test the solution on an inconspicuous portion of the wallcovering before proceeding, checking that there is no adverse effect on finish, colour or gloss.
- Care should be taken on dark colours due to the possibility of causing 'light marks'. Always use a blotting action rather than rubbing to avoid abrasion.
- Dry with a soft lint free cloth or towel.
- Avoid alcohol / solvent based cleaners.
- Please refer to the FACET care and maintenance instructions for further details. A copy is available on our website or obtained by contacting your nearest office or agent.

## WARRANTY

- For a period of 3 years from date of invoice this wallcovering is guaranteed to be first quality and free of manufacturing defects. This warranty applies only to professionally applied installations according to the recommended installation instructions, and proper care and maintenance using appropriate cleaning agents as outlined in the care and maintenance instructions.

