

# ANTWERP

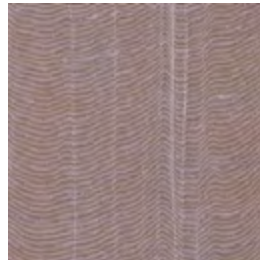
—  
A unique textural  
wallcovering with  
sophisticated organic pleats

INSTYLE

# ANTWERP



Engel AWP-04



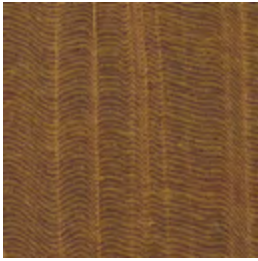
Arsenaal AWP-07



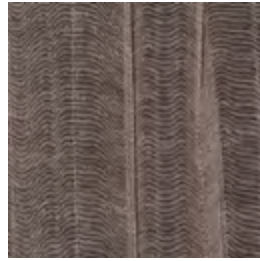
Vagant AWP-05



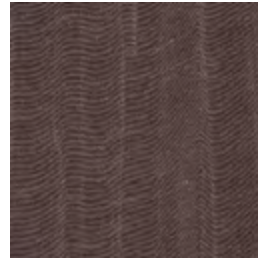
Cuveeke AWP-08



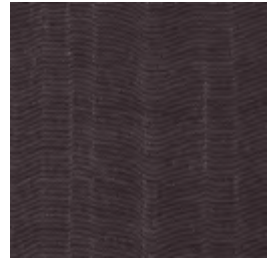
Chimay AWP-01



Achel AWP-09



Rochefort AWP-03



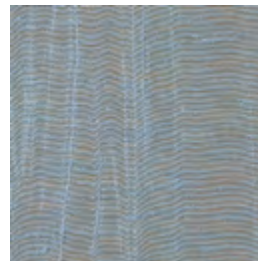
Orval AWP-02



Karmeliet AWP-10



Westmalle AWP-11



Beveren AWP-06



Troubadour AWP-12

Patterns shown are not to scale  
Product may vary in colour due to the nature of the media  
Please refer to website for current colour range



FACE COMPOSITION	97% linen, 3% polyester
BACKING TYPE	non-woven
WIDTH	109cm
WEIGHT	369gsm / 403g lineal mtr
PATTERN REPEAT	non-match
ROLL SIZE	29.2m approx. NB: minimum order quantity is 10.9m and 0.9m multiples
PERFORMANCE	Type I Wallcovering
FIRE RATING AS/NZS 3837	BCA Group 1 Av. Specific Extinction Area 51.1 m2/kg
ISO 5660.1	NZBC Group 1-S (in accordance with C/VM2 appendix A)
Additional Fire Tests	ASTM E-84 Tunnel Test Class A

## ENVIRONMENT

- ANTWERP is made from 97% rapidly renewable content (linen). It is manufactured with water-based inks and topcoats, as well as free of heavy metals, plasticisers and fire retardant chemicals.

## PRODUCT INSTALLATION

- Please refer to installation instructions for ANTWERP supplied with each shipment. A copy is also available on our website.
- All material must be installed in numerical sequence as cut from the roll.

## CARE + MAINTENANCE

- Due to the delicate nature of the finishes, care must be taken not to damage or mark the surface due to abrasion / rubbing.
- General maintenance can be achieved with periodic dusting or vacuuming with a soft brush attachment.
- Remove ordinary dirt and smudges with a mild soap and warm water solution.
- Always test the solution on an inconspicuous portion of the wallcovering before proceeding, checking that there is no adverse effect on finish, colour or gloss.
- Care should be taken on dark colours due to the possibility of causing 'light marks'. Always use a blotting action rather than rubbing to avoid abrasion.
- Rinse thoroughly with clean water from the top down using a sponge.
- Dry with a soft lint free cloth or towel.
- Avoid alcohol / solvent based cleaners.
- ANTWERP care and maintenance instructions are available on our website.

## WARRANTY

- For a period of 3 years from date of invoice this wallcovering is guaranteed to be first quality and free of manufacturing defects. This warranty applies only to professionally applied installations according to the recommended installation instructions, and proper care and maintenance using appropriate cleaning agents as outlined in the care and maintenance instructions.

