

Ecoustic® Soffit Absorber Installation + Care

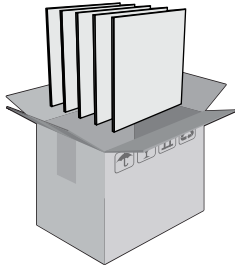


INSTYLE

Ecoustic® Soffit Absorber - Installation

ASSEMBLY INSTRUCTIONS

Supplied



12 / 24 x Ecoustic® 25mm Soffits
or
6 / 12 x Ecoustic® 50mm Soffits

Sold as single colour per box

Essential



Clean hands
Handle with care during installation

Cleaning Products



Tensorgrip® C101
Citrus Cleaner*



TensorGrip S500
Industrial Wipes*

Adhesives



Tensorgrip X41 Adhesive*
Extreme tack performance, a long open time and highly controllable spray pattern enabling fast acoustic panel installations with the advantage of low adhesive odour



Tensorgrip Insta Grip X40*
Designed for use with TensorGrip X41 when applying acoustic panels overhead

*Important

- Check compatibility of cleaning and adhesive products on the substrate before use
- Sheets may need to be squared prior to installation

Ecoustic® Soffit Absorber - Surface Preparation

Adhering Soffits to Concrete

Ensure concrete is clean and dust free, ensure the surface is flat and clear of any raised sections of concrete. If there is any form of contaminants, such as release agents used during the production of concrete substrate, ensure this is completely removed where practical, if this is not a practical option install a panel to perform an adhesion test.

Adhering Soffits to Painted Surfaces

Ensure surface is completely free of grease, oil, dirt, dust or any other contaminants. Ensure painted surface is flat, strong and secure, has no signs of paint blistering, flaking or peeling paint and the paint has a solid bond to the painted substrate. Ensure paint has had ample time to dry and harden prior to adhering panels and is suitable for the bonding of acoustic panels (check with paint manufacturer). Do not adhere panels to non-stick paints or paint with Teflon base.

For cleaning organic-based contaminants from painted surface use Tensorgrip CIOI Cleaner, spray CIOI Cleaner on surface and allow CIOI Cleaner foaming cleaner to take effect, approx 10-20 seconds, wipe off cleaner and contaminants in one direction using paper towel or clean microfibre cloth, allow to completely dry and evaporate before applying adhesive. If contaminants remain repeat the process.

Adhering Soffits to Steel Surfaces

Ensure surface is completely free of grease, oil, dirt, dust or any other contaminants. Ensure surface is flat, strong and secure. To prepare the surface first use Tensorgrip CIOI Cleaner. Spray Tensorgrip CIOI Cleaner on surface where adhesive is to be applied and allow to take effect, approx. 10-20 seconds, wipe off cleaner and contaminants in one direction using paper towel or clean microfibre cloth, allow to completely dry and evaporate. If contaminants remain repeat the process.

Clean Up Surrounding Areas

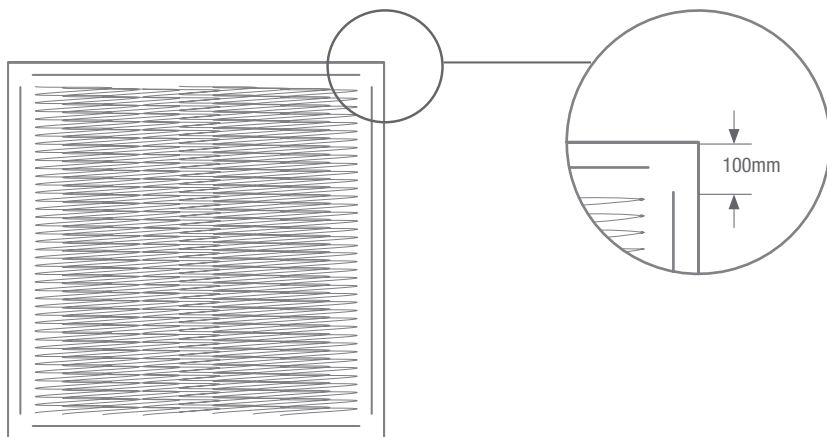
Important: Do not use on soffit face

To remove or clean up any spills or excess Tensorgrip X41 adhesive, use Tensorgrip CIOI Cleaner. Remove excess Tensorgrip X41 adhesive with a spatula or paper towel, spray the Tensorgrip X41 adhesive liberally with Tensorgrip CIOI Cleaner and wipe away with paper towel, you may need to repeat this process multiple times to remove all of the Tensorgrip X41 adhesive. Tensorgrip CIOI Cleaner will dilute the Tensorgrip X41 adhesive while it is uncured.

To remove or clean Tensorgrip X41 adhesive from tools and hands, use TensorGrip S500 Industrial Wipes, which will remove uncured Tensorgrip X41 adhesives, polyurethanes and silicones.

These instructions have been provided by the manufacturer of Tensorgrip.

Ecoustic® Soffit Absorber - Installation



- For applications above head height, a perimeter bead of construction adhesive such as Insta Grip X40 must be used in conjunction with Tensorgrip X41 Adhesive
- Insta Grip X40 Adhesive to cover typically 100mm around perimeter of the panel
- Soffit liners must be installed via mechanical fasteners in addition to adhesives

BEAD PATTERN - Tensorgrip Insta Grip X40 Adhesive



Hold gun close to the surface at a 45° angle

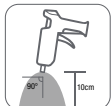


Apply strips of adhesive approx 10-20cm apart to one substrate



Place surfaces together and apply gentle pressure to allow the foamy adhesive to spread across the surface of the substrate

FINE WEB SPRAY - Tensorgrip X41 Adhesive



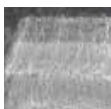
Spray Tensorgrip X41 about 10-20 cm away at a 90 degree angle to the surface, applying a uniform, even coat of adhesive to obtain 80-100% surface coverage.



Spray evenly on surface with a 50% overlap for full coverage. Apply one even coat of adhesive onto matting with no overlap. Leave surfaces to tack off for 1-2 minutes, or until dry to touch using the back of your knuckles.



Place surfaces together and apply even pressure to establish the bond. A roller can be used where appropriate to ensure even pressure across the entire bond surface.



✓ You should be able to clearly see the web pattern of the adhesive on the surface of your substrate.



✗ If you can see air bubbles or build up of adhesive in your spray pattern, then you are either spraying too close to the surface of the substrate or moving your gun too slowly.



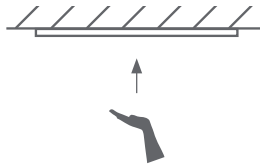
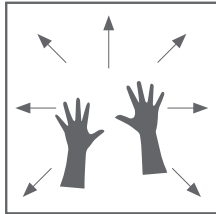
✗ If the spray pattern on your substrate looks wispy (like spiderweb) then you are spraying from too far away. Move your gun a little closer to the substrate.



✗ If the spray pattern is thin and looks drawn out, then you are spraying too quickly.

Ecoustic® Soffit Absorber - Installation

MOUNTING METHOD



Adhere surfaces and press together with adequate pressure. A roller is recommended to apply a uniform pressure to achieve maximum strength. Allow 24 hours for the adhesive to fully cure.

IMPORTANT

- Sheets may need to be squared prior to installation
- Maximum bond strength is achieved with 100% coverage and recommended coat weight of 20 dry grams per sqm
- If necessary, spray another coat of adhesive in areas that appear to need more adhesive
- Spray both surfaces to be bonded, for eg. soffit vertically and the Soffit Absorber horizontally
- Allow enough time for the glue line to tack-off (1-2 minutes or until dry but tacky to the touch without any transfer of wet adhesive to fingers) before placing Soffit Absorbers and creating the bond
- Apply the panel to create the bond within the open time of the Tensor Grip X41 adhesive (within 45-60 minutes)
- If you have exceeded the open time, spray a fresh glue line and adhere within the open time
- Full surface pressure must be applied to bonded panel using a roller within 10 minutes of the panel being applied to facilitate full adhesive transfer and a strong bond
- Initial bond is strong enough to allow for cutting or trimming immediately if needed
- The bonded panel should be smooth and free of air bubbles, wrinkles, gaps and / or blemishes
- Before installation, please read the instructions carefully to determine the correct adhesive or combination of adhesives which should be used
- Soffit liners must be installed via mechanical fasteners in addition to adhesives
- Please refer to Quin Global's website for the latest recommendations on their Tensorgrip product specifications and guidelines

Structural Safety

All overhead installations should meet structural engineers safety certification.

Disclaimer

The information in this guideline is true and complete to the best of our knowledge. All recommendations in this guideline are made without guarantee due to the varying nature of installations. We are not responsible for any damages relating to the use or misuse of this information

Ecoustic® Soffit Absorber Care

Please Note

- Care must be taken when cleaning as these instructions apply to the fabric face only and the possible effect of the cleaning regime on underlying bases and ceiling surface must be considered
- For these reasons it is suggested to spot clean only and that it be carried out by a professional cleaner

Regular Care

- Protect from direct heat and sunlight
- To prevent dust build up, lightly dust with a soft cloth or vacuum with a soft brush attachment

Cleaning

- Professional cleaning is always recommended
- Always test any any cleaning products on an inconspicuous area prior to commencing cleaning
- Blot any excess spills from the material with a dry clean sponge or cloth
- Treat all stains and spills as soon as possible
- Most marks can be spot cleaned by lightly wetting the affected area with a mild detergent and warm water solution
- Do not saturate the tile
- Do not scrub or abrade the tile surface as this will affect the surface finish
- Once the stain or mark has been loosened then blot the excess solution out with a dry clean sponge or cloth
- Sponge afterwards with clean warm water and dry any excess moisture with a dry clean sponge or cloth
- The product can also be spot cleaned with dry cleaning fluid, lightly sponge a small amount of dry cleaning fluid and blot
- Dry away from direct heat and sunlight
- Do not use carpet shampoo