

NATIVE

A beautiful upholstery
fabric from the
sustainable LIFE
Textiles® collection



INSTYLE

NATIVE



NATIVE Paperbark



NATIVE Dialect



NATIVE Wattleseed



NATIVE Imagery



NATIVE Guide



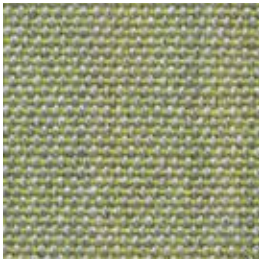
NATIVE Banksia



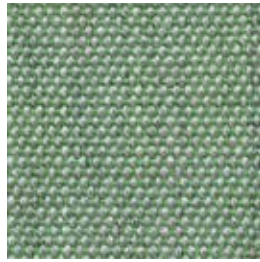
NATIVE Red Ochre



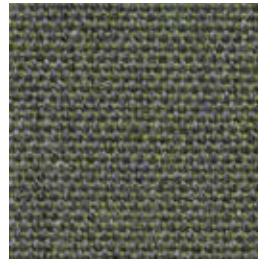
NATIVE Art



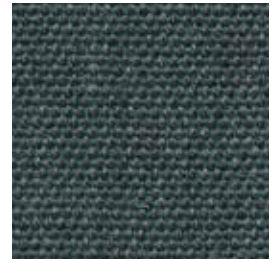
NATIVE Olivine



NATIVE Tea Tree



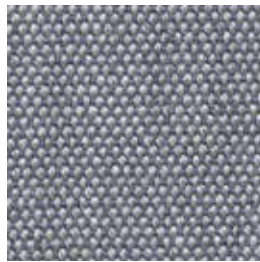
NATIVE Eucalypt



NATIVE Flora



NATIVE Blue Gum



NATIVE Habitat



NATIVE Coastline



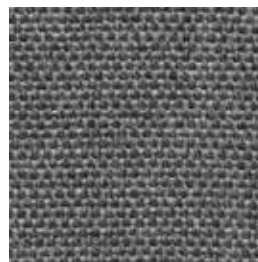
NATIVE Language



NATIVE Saltbush



NATIVE Silver Ash



NATIVE Ironbark



NATIVE Mallow

Product may vary in colour due to the nature of the media
Please refer to website for current colour range



COMPOSITION	>90% Australian eco wool, 10% nylon	
WIDTH / WEIGHT	137cm / 390gsm	
PATTERN REPEAT	Nil	
ROLL SIZE	50m approx.	
CARE CODE	CTA 1	
ABRASION Martindale AS2001.2.25	>100,000	
CTA RATING	hc	HEAVY DUTY COMMERCIAL USE
SEAM SLIPPAGE AS2001.2.22	Warp 7mm Weft 4mm	Note: All seams must be overlapped or secured to prevent the premature failure of the seam due to fraying
PILLING Martindale IWS196	4 - 5	
LIGHTFASTNESS ISO B05 102	> 5	
FIRE RATINGS AS/NZS 1530.3	Ignitability	0
	Spread of Flame	0
	Heat Evolved	0
	Smoke Developed	3
AS/NZS 3837 (AS 5637.1)	BCA Group 2	Av. Specific Extinction Area 81.4m2/kg
ISO 5660.1	NZBC Group 2s	in accordance with C/VM2 Appendix A
IMO 2010 FTP Part 8	Sections 4.2 + 4.3: Pass	
APPLICATION	Upholstery seating, screen, wall panel	
ORIGIN	Made in Australia	
PLEASE NOTE	Results from performance tests are guidelines only	
GIVING BACK	\$1/m sold will be donated to The Nature Conservancy	

ENVIRONMENT

- Made from at least 90% Australian low pesticide EU-Ecolabel certified eco wool
- Manufactured in Australia to strict environmental criteria, reduced water and energy use, reuse of water (30%), recycling of waste, no hazardous substances
- Wool absorbs indoor air contaminants, benefiting indoor air quality
- NATIVE is certified as low-VOC
- 100% biodegradable + recyclable

GREEN STAR

NATIVE can contribute points to the following Green Star criteria:

- Stewardship Programs: NATIVE can be reused or recycled through our Revive recycling program
- Low-VOC
- NATIVE can be used on white furniture certified to Ecospecifier, AFRDI, ECNZ and GECA
- The Green Star Rating Tool states “Where at least 90% of an item’s mass is certified to a GBCA recognised standard, the item can be entered as a certified product at Level A, B or C.” Therefore any fabric can be used as fabrics are almost always under 10% by weight of a furniture item

LEED

NATIVE can contribute points to the following LEED criteria:

- Bio-Based + Rapidly-Renewable Content (90%)
- Low-VOC
- Extended Producer Responsibility Recycling Program

WELL

NATIVE can contribute to the following WELL criteria:

- Low VOC / VOC Reduction: NATIVE is low VOC
- Toxic Material Reduction: NATIVE is free of PFCs, flame retardants, phthalates and urea formaldehyde