

# Ecoustic® SC Panel

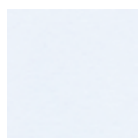
—  
An acoustic panel with a solid colour (SC) profile ideal for exposed edge applications



INSTYLE

# Colours

## Solid Colour 9mm



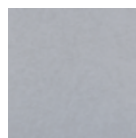
Milk



Dune



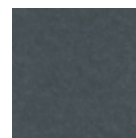
Marble



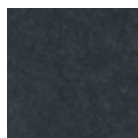
Dapple



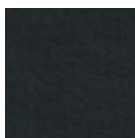
Zinc



Alloy



Equinox

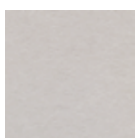


Zodiac

## Solid Colour 12mm



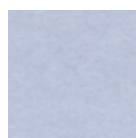
Snowdrop



Horizon



Oxide



Cool



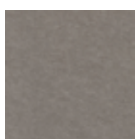
Tungsten



Galaxy



Almond



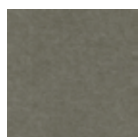
Fawn



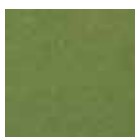
Arizona



Venus



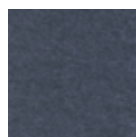
Olive



Leaf



Bluebell



Denim



Iris

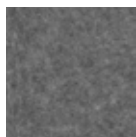
## Solid Colour 24mm



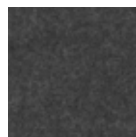
Pure



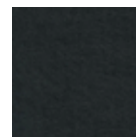
Stone



Ash



Graphite



Nero

Custom colours are available, minimums apply

Product may vary in colour due to the nature of the media  
Please refer to website for current colour range

# Ecoustic® Solid Colour Panel



**PRODUCT** Ecoustic® Solid Colour Panel (SC)

**COMPOSITION** 100% PET

**THICKNESS** 9mm, 12mm (+/-1mm approx.)  
24mm (+/-2mm approx.)

**WEIGHT** 9mm: 1900gsm / 12mm: 2400gsm

**DIMENSIONS** 9mm: 1220 x 2440mm approx.  
12mm: 1220 x 2800mm approx.  
24mm: 1210 x 2720mm approx.

**LIGHTFASTNESS** >7  
ISO 105-B02

**FIRE RATINGS**

AS/NZS 1530.3	9mm	12mm	24mm
Ignitability	9	8	8
Spread of Flame	0	0	0
Heat Evolved	3	1	1
Smoke Developed	6	5	5

AS/ISO 9705 BCA Group 1  
SMOGR <100  
NZBC Group 1-S

ASTM E84 9mm: Class C  
12mm: Class A

**ACOUSTIC** Refer to acoustic info on following page

**APPLICATION** Workstation screen, partition,  
wall panel, ceiling

**PLEASE NOTE** Onsite trimming to square each panel is essential. Variation in thickness, fibre mix, colour as well as flecks + surface blemishes are an inherent + unavoidable feature. Variations from panel to panel can occur, panel joins may be obvious upon installation creating a panelling effect. Installation may require onsite adjustment by the contractor to achieve a professional finish + minimal variation. Results from performance tests are guidelines only

## BENEFITS

**Lightweight, Easy to Handle + Install:** Compared to traditional panels, Ecoustic® SC is lower in weight, easier to handle and results in reduced transportation costs. Ecoustic® SC can be trimmed and installed without the need for additional finishes, which reduces labour and material costs. Installation + Care Guidelines are available on our website

**Edging Profile:** 9mm, 14.5mm + 25mm natural anodised aluminium edging length + T Trims in natural anodised or black powdercoat at 2750mm (+/- 5mm) are available

### Designed for the Environment

- Designed for disassembly + recyclable
- Ecoustic® SC panels are low-VOC + Oeko-Tex Certified

**Building Rating Systems:** SC panels will contribute the following points for Green Star, LEED + WELL building standards.

Criteria	Green Star	LEED	WELL
Low VOC	√	√	√
Recycling Program	√	√	NA
Third Party Certification	-	√	√
Toxic Material Reduction	NA	NA	√

## HOW TO SPECIFY

<b>PRODUCT</b>	Ecoustic® Solid Colour Panel
<b>THICKNESS</b>	9mm, 12mm or 24mm
<b>COLOUR</b>	Select from applicable SC colours for nominated thickness

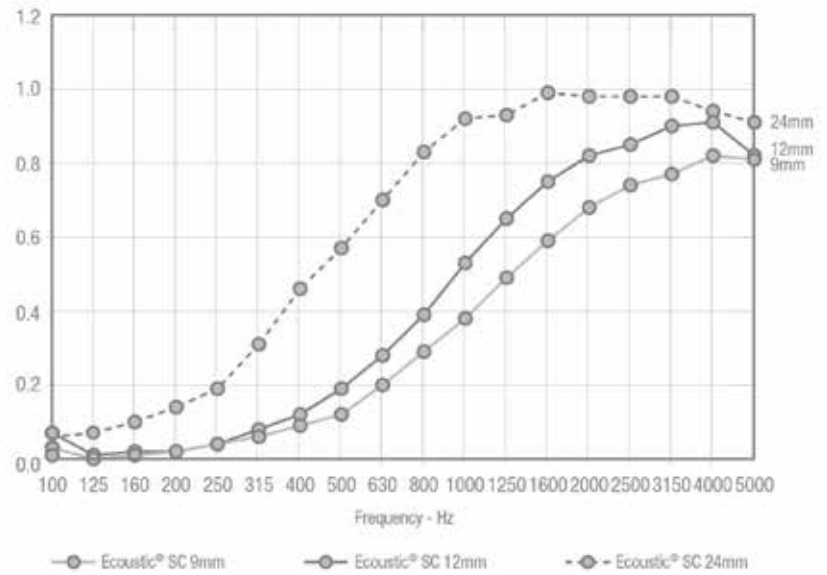
# Acoustic Performance

The sound absorption has been tested in accordance with AS/ISO 354

9mm  $\alpha_w$  0.2 / NRC 0.3 (Direct Fix)  
 12mm  $\alpha_w$  0.25 / NRC 0.4 (Direct Fix)  
 24mm  $\alpha_w$  0.45 / NRC 0.65 (Direct Fix)

For complete test reports please contact your local distributor

Frequency	$\alpha_S$ 9mm	$\alpha_S$ 12mm	$\alpha_S$ 24mm
100	0.03	0.07	0.06
125	0.00	0.01	0.07
160	0.01	0.02	0.10
200	0.02	0.02	0.14
250	0.04	0.04	0.19
315	0.06	0.08	0.31
400	0.09	0.12	0.46
500	0.12	0.19	0.57
630	0.20	0.28	0.70
800	0.29	0.39	0.83
1000	0.38	0.53	0.92
1250	0.49	0.65	0.93
1600	0.59	0.75	0.99
2000	0.68	0.82	0.98
2500	0.74	0.85	0.98
3150	0.77	0.90	0.98
4000	0.82	0.91	0.94
5000	0.81	0.82	0.91
NRC	0.3	0.4	0.65



# Acoustic Performance

Ecoustic® SC 24mm is ideal for medium to high frequency absorption and achieves an  $\alpha_w$  0.45 / NRC 0.65 (Direct Fix),  $\alpha_w$  0.82 / NRC 0.9 (150mm airgap),  $\alpha_w$  0.95 / NRC 0.95 (200mm airgap).

The sound absorption has been tested in accordance with AS/ISO 354

9mm:  $\alpha_w$  0.78 / NRC 0.85 (200mm air gap)

12mm:  $\alpha_w$  0.8 / NRC 0.85 (200mm air gap)

24mm:  $\alpha_w$  0.95 / NRC 0.95 (200mm air gap)

For complete test reports please contact your local distributor

Frequency	$\alpha_s$ 9mm	$\alpha_s$ 12mm	$\alpha_s$ 24mm
100	0.47	0.62	0.39
125	0.56	0.69	0.38
160	0.69	0.71	0.55
200	0.75	0.91	0.76
250	0.96	0.92	0.80
315	0.92	0.87	0.94
400	1.00	1.08	1.02
500	1.06	0.96	1.05
630	0.87	0.84	1.04
800	0.73	0.74	0.95
1000	0.71	0.76	0.86
1250	0.78	0.88	0.99
1600	0.81	0.84	1.00
2000	0.76	0.79	0.94
2500	0.77	0.76	0.90
3150	0.80	0.79	0.89
4000	0.78	0.74	0.88
5000	0.79	0.76	0.85
NRC	0.85	0.85	0.95

