

CHUNKY

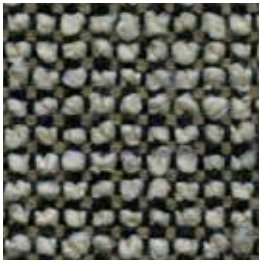


An exaggerated modern texture with a warm and luxurious aesthetic



INSTYLE

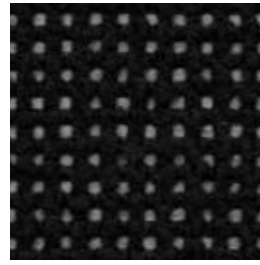
CHUNKY



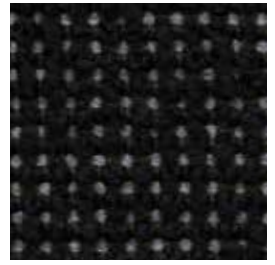
CHUNKY Profile



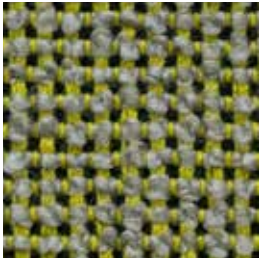
CHUNKY Rock



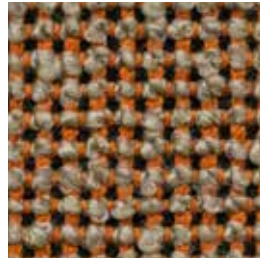
CHUNKY Mama



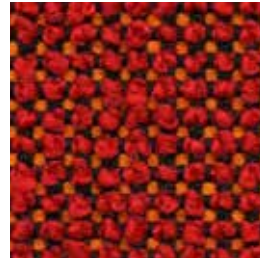
CHUNKY Chocolate



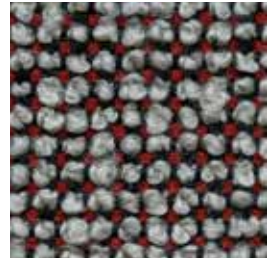
CHUNKY Ice



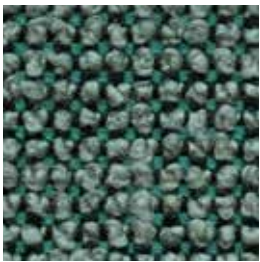
CHUNKY Look



CHUNKY Jam



CHUNKY Beats

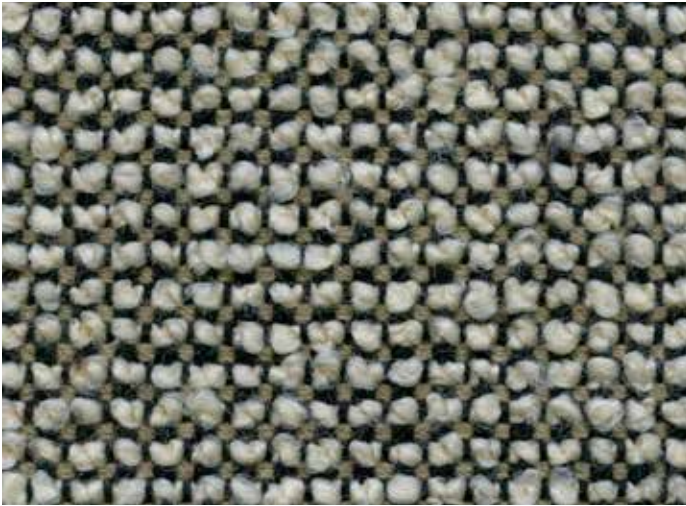


CHUNKY Heels



CHUNKY Apple

Patterns shown are not to scale
Product may vary in colour due to the nature of the media
Please refer to website for current colour range



COMPOSITION	96% NZ wool, 4% nylon
WIDTH / WEIGHT	137cm / 760gsm
PATTERN REPEAT	nil
ROLL SIZE	26m approx.
CARE CODE	CTA 1
ABRASION	
Martindale AS2001.2.25	50,000
Wyzenbeek ASTM D4157	60,000
CTA RATING	hc HEAVY DUTY COMMERCIAL USE
SEAM SLIPPAGE	Warp 5.5mm Weft 7.3mm
AS2001.2.22	Note: All seams must be overlapped or secured to prevent the premature failure of the seam due to fraying
PILLING	4-5
Martindale IWS196	
LIGHTFASTNESS	6
AS 2001.4.21	
FIRE RATINGS	Ignitability 0
AS/NZS 1530.3	Spread of Flame 0
	Heat Evolved 0
	Smoke Developed 4
AS/NZS 3837	BCA Group 2
	Av. Specific Extinction Area 122.5 m ² /kg
IMO Resolution A.625(16)	Sections 8.2 + 8.3: PASS
APPLICATION	upholstery, screen, wall panel
ORIGIN	Made locally
PLEASE NOTE	Results from performance tests are guidelines only

ENVIRONMENT

- 96% sustainable, rapidly renewable NZ wool content
- Reduced water (6% savings) and energy consumption, non-potable water supply (100% rain and ground water), recycling of waste
- Manufacturer has a certified EMS (Enviro-Mark Diamond)
- CHUNKY is certified low VOC
- Wool absorbs indoor air contaminants, benefiting indoor air quality
- 96% biodegradable (natural fibre content) and recyclable

GREEN STAR

CHUNKY can contribute points to the following Green Star criteria:

- Stewardship Programs: CHUNKY can be reused or recycled through our Revive recycling program
- Low-VOC
- CHUNKY can be used on white furniture certified to Ecospecifier, AFRDI, ECNZ and GECA
- The Green Star Rating Tool states “Where at least 90% of an item’s mass is certified to a GBCA recognised standard, the item can be entered as a certified product at Level A, B or C.” Therefore any fabric can be used as fabrics are almost always under 10% by weight of a furniture item

LEED

CHUNKY can contribute points to the following LEED criteria:

- Bio-Based + Rapidly-Renewable Content (96%)
- Low-VOC
- Extended Producer Responsibility Recycling Program

WELL

CHUNKY can contribute to the following WELL criteria:

- Low VOC / VOC Reduction: CHUNKY is low VOC
- Toxic Material Reduction: CHUNKY is free of PFCs, flame retardants, phthalates and urea formaldehyde