

# MIX

—  
A beautiful wool and alpaca  
marle felt with a soft  
luxurious touch

INSTYLE

# MIX



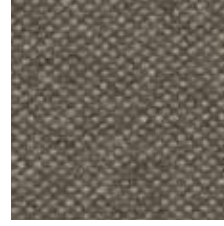
MIX Ivory



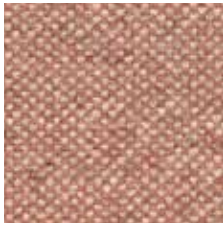
MIX Nude



MIX Harvest



MIX Taupe



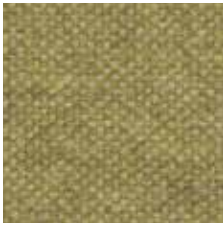
MIX Kindred



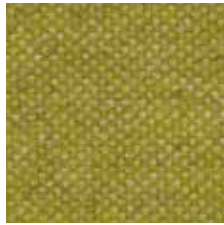
MIX Mandarin



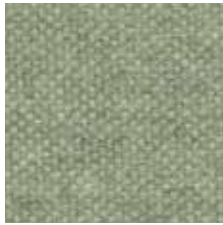
MIX Fig



MIX Juice



MIX Citrine



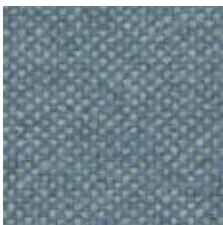
MIX Sage



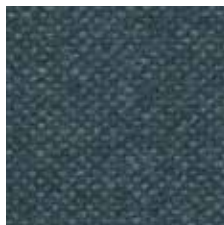
MIX Olive



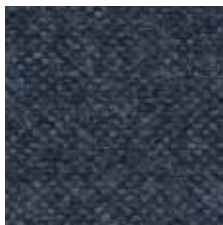
MIX Acorn



MIX Glacier



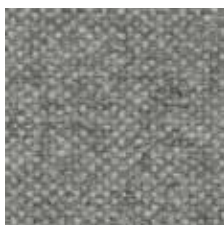
MIX Reef



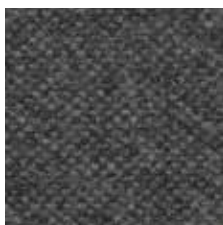
MIX Blueberry



MIX Vapour



MIX Xenon



MIX Quartz



MIX Lava

Product may vary in colour due to the nature of the media  
Please refer to website for current colour range



COMPOSITION	65% Australian wool, 20% nylon, 15% alpaca	
WIDTH / WEIGHT	137cm / 525gsm	
PATTERN REPEAT	nil	
ROLL SIZE	50m approx.	
CARE CODE	CTA 1	
ABRASION Martindale AS2001.2.25	>100,000	
CTA RATING	<b>hc</b>	HEAVY DUTY COMMERCIAL USE
SEAM SLIPPAGE AS2001.2.22	Warp 6.5mm Weft 5mm	Note: All seams must be overlocked or secured to prevent the premature failure of the seam due to fraying
PILLING Martindale IWS196	3-4	
LIGHTFASTNESS ISO 105 B02	>6	
FIRE RATINGS AS/NZS 1530.3	Ignitability	11
	Spread of Flame	0
	Heat Evolved	0
	Smoke Developed	4
AS/NZS 3837	BCA Group 2	Av. Specific Extinction Area 67.5 m <sup>2</sup> /kg
ISO 5660.1	NZBC Group 2S	Av. Specific Extinction Area 64.3m <sup>2</sup> /kg
IMO 2010 FTP CODE PT 8	Cigarette + Flame: Pass	
APPLICATION	upholstery, screen, wall panel	
PLEASE NOTE	Results from performance tests are guidelines only	

**ENVIRONMENT**

- 80% sustainable, rapidly renewable content
- Reduced water and energy consumption, recycling of waste
- MIX is certified low VOC
- Wool absorbs indoor air contaminants, benefiting indoor air quality
- 80% biodegradable (natural fibre content) and recyclable

**GREEN STAR**

- MIX can contribute points to the following Green Star criteria:
- Stewardship Programs: MIX can be reused or recycled through our Revive recycling program
  - Low-VOC
  - MIX can be used on white furniture certified to Ecospecifier, AFRDI, ECNZ and GECA
  - The Green Star Rating Tool states “Where at least 90% of an item’s mass is certified to a GBCA recognised standard, the item can be entered as a certified product at Level A, B or C.” Therefore any fabric can be used as fabrics are almost always under 10% by weight of a furniture item

**LEED**

- MIX can contribute points to the following LEED criteria:
- Bio-Based + Rapidly-Renewable Content (80%)
  - Low-VOC
  - Extended Producer Responsibility Recycling Program

**WELL**

- MIX can contribute to the following WELL criteria:
- Low VOC / VOC Reduction: MIX is low VOC
  - Toxic Material Reduction: MIX is free of PFCs, flame retardants, phthalates and urea formaldehyde