

# BUCK

—

An exquisite nubuck  
leather with a soft  
velvet touch



INSTYLE

# BUCK



BUCK Ermine



BUCK Cashmere



BUCK Pearl



BUCK Martin



BUCK Chinchilla



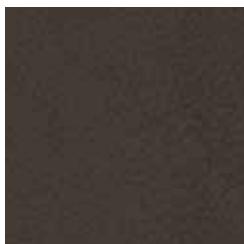
BUCK Squirrel



BUCK Mink



BUCK Sable



BUCK Otter

Leather may vary in colour due to the nature of the media  
Please refer to website for current colour range



AVERAGE HIDE SIZE	5.5sqm approx.
THICKNESS	1.4 - 1.6mm
WEIGHT	1200gsm
LEATHER TYPE	Nubuck 
COLOURFASTNESS TO-AND-FRO RUBBING EN ISO 11640 + 11641	Dry 3 Wet 3 Perspiration 3
LIGHTFASTNESS EN ISO 105-B02	3-4
pH AND ΔpH EN ISO 4045	pH 3.65 ΔpH 0.54
TEAR STRENGTH EN ISO 3377-1	>77 N
FIRE RATINGS AS/NZS 1530.3	Ignitability 15 Spread of Flame 0 Heat Evolved 1 Smoke Developed 2
AS/NZS 3837	BCA Group 1 Av. Specific Extinction Area 60m2/kg
ISO 5660-1	NZBC Group 1 Av. Specific Extinction Area 60m2/kg
APPLICATION	upholstery and wall panels for low traffic commercial, residential and hospitality applications

**PLEASE NOTE** Only the very best raw hides are used for Nubuck leathers. The natural characteristics such as insect bites, fat wrinkles, growth marks and healed scars can still be visible, a sign of a superior natural leather with its own individuality. Nubuck leathers do not have any protective coating on the surface and are therefore more susceptible to fading from sunlight exposure. Results from performance tests are guidelines only.

### CARE

- Leather Care for Nubuck Leathers is available from our website

### ENVIRONMENT

- Leather is an agricultural by-product
- BUCK is produced at a European tannery that complies with EU REACH Regulation for the use of chemicals
- Certified as low-VOC
- Reusable

### GREEN STAR

- BUCK can contribute low VOC points
- BUCK can be used on white furniture certified to Ecospecifier, AFRDI, ECNZ and GECA
- The Green Star Rating Tool states “Where at least 90% of an item’s mass is certified to a GBCA recognised standard, the item can be entered as a certified product at Level A, B or C.” Therefore any leather can be used as leathers are almost always under 10% by weight of a furniture item

### LEED

- BUCK can contribute low VOC points

### WELL

- BUCK can contribute to Low VOC / VOC Reduction
- Toxic Material Reduction: BUCK is free of PFCs, flame retardants, phthalates and urea formaldehyde

### SEATING COMFORT RATING



A rating to determine a leather’s seating comfort based upon the leather’s ability to breathe and absorb moisture. Tested to ASTM E 96 M-05. BUCK achieves an Excellent Seating Comfort rating.